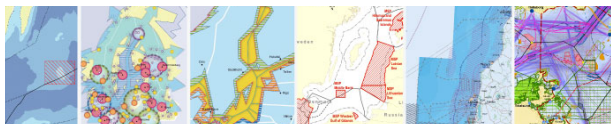




Country Fiche Lithuania

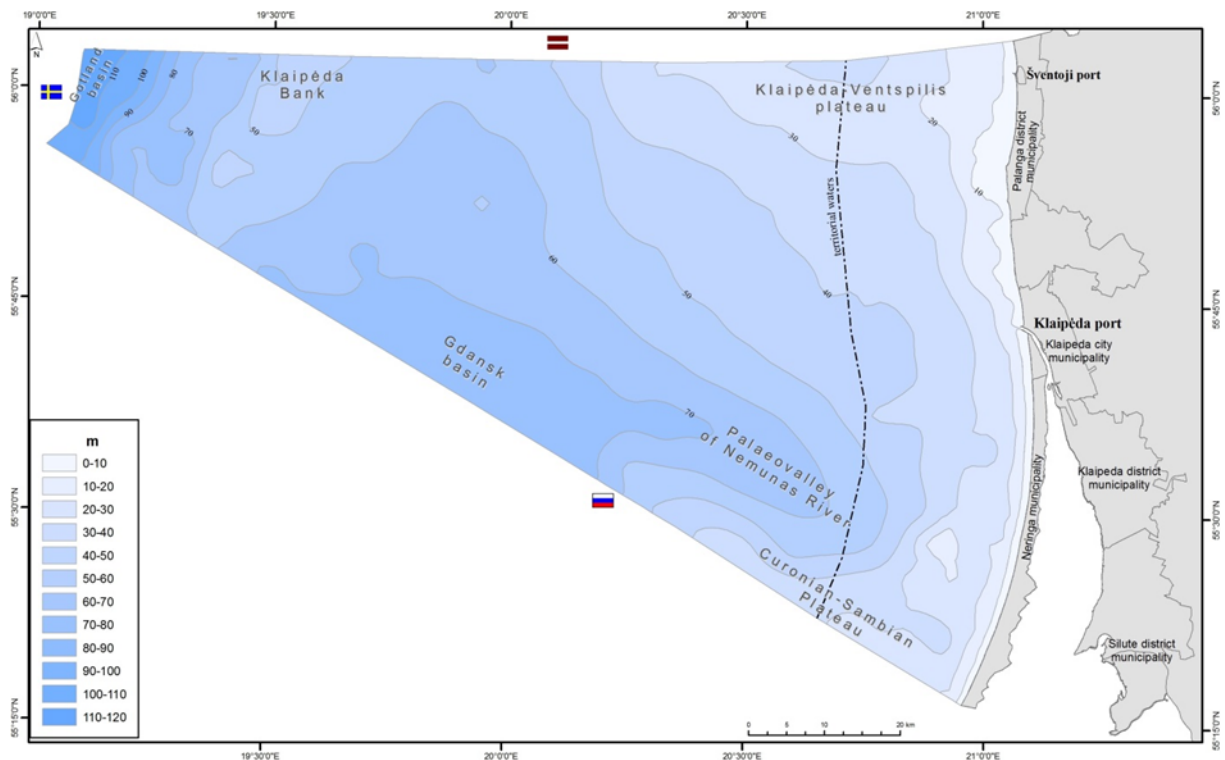


1. General information

The Lithuanian maritime space is delimited by the Decree of the Government of the Republic of Lithuania of 6 December, 2004, No. 1597 and includes internal waters, territorial waters, the exclusive economic zone, the sea bottom and the soil underneath, as follows:

- Internal waters (lagoons not included): about 35 km²
- Territorial waters (12-nm zone): about 1 810 km²
- Exclusive economic zone including adjoining zone: about 4 560 km²

Marine areas borders Latvia in the North, the Russian Federation in the South (Kaliningrad oblast) and Kingdom of Sweden in the West. The nearshore area within a 20 m water depth is part of the “Coastal Strip”.



1.1. Governance

According to Art. 47 of the Constitution of the Republic of Lithuania, the exclusive right for the Lithuanian maritime space belongs to the Republic of Lithuania (i.e. owned by the state). Current governance of the sea space is defined by legal acts relating to the use of the sea space and responsibilities of the Republic of Lithuania as stipulated in international legal acts in which it participates. The Comprehensive Plan of the Territory of the Republic of Lithuania is complemented by marine spatial solutions prepared in 2011-2013 and expected to be adopted in 2014.

1.2. Contacts

MSP in general:

Mr. Marius Narmontas
 Head of Territorial planning, urban development and
 architecture department
 Ministry of Environment
 Jaksto 4 /9, LT-01105 VILNIUS



Espoo contact point:

Ms. Miglė Masaitytė
Head of EIA Division
Ministry of Environment
Jaksto 4 /9, LT-01105 VILNIUS
E-mail: m.masaityte@am.lt

2. General information on legislation

In Lithuania there is no specific legal act dealing with maritime spatial planning. MSP was implemented based on the existing Law on Territorial Planning by supplementing the existing Comprehensive Plan of the Territory of the Republic of Lithuania with marine spatial solutions (both for territorial waters and the EEZ). The revised Law on Territorial Planning adopted on 27 June 2013, which came into force on 1 January 2014, includes stipulations on planning for the sea space. The same stands at different levels of planning are included in the Rules of Complex Territorial Documents Preparation adopted by the Minister of Environment Order No. D1-8 on 2 January 2014 as an executive legal act, following the revised Law on Territorial Planning. Part of the marine space (up to 20 m isobath) falls under the regulation of the Law of the Coastal Strip. In addition, the Republic of Lithuania is a signatory state of the United Nations Convention on the Law of the Sea. There are more than 20 legal acts (laws and governmental decrees) guiding the use of the sea space.

3. General applicability (e.g. territorial Sea, EEZ, other distinctions)

MSP applies to the entire marine area of Lithuania including territorial waters and the exclusive economic zone.

4. Spatial Plan

4.1. Extension of the General Plan of the Republic of Lithuania with marine solutions

4.1.1. Legal basis

The extension of the General Plan of the Republic of Lithuania with marine solutions is a legally binding document, influencing the state and development of all other related planning documents of lower rank in the existing planning documents hierarchy.

4.1.2. Legal impact

It serves as a basis for further development of regulatory framework for different sea uses.

4.1.3. Area covered

The extension covers the entire marine area of Lithuania including territorial waters and exclusive economic zone.



4.1.4. Historic development

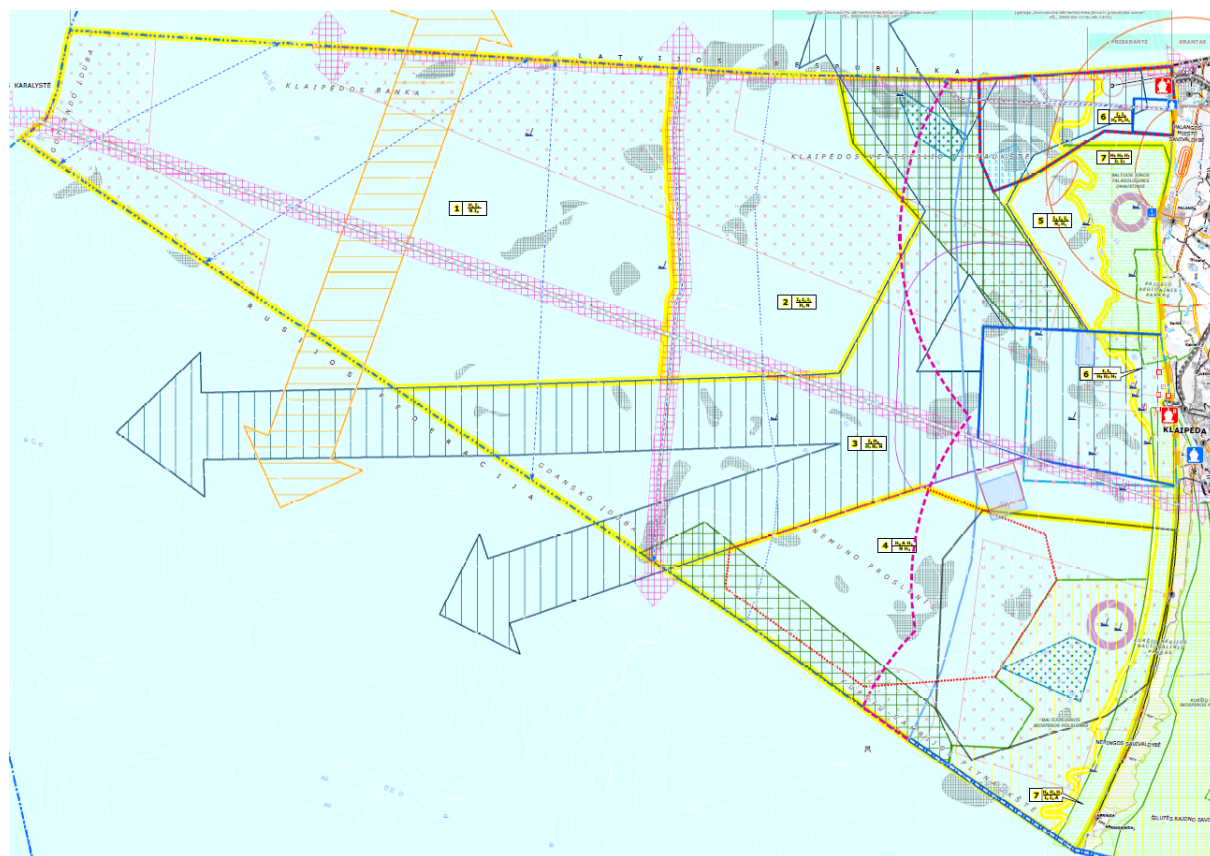
The draft of the plan was developed in 2011-2013. Although some initial preparations such as stocktaking and the analysis of strategic and legislative documents were done in the scope of the BSR Programme project BaltSeaPlan (2005-2008)

4.1.5. Objectives of the plan

The main objective is to extend the existing terrestrial plan by supplementing it with marine spatial solutions. This allows to create preconditions of development of maritime economic activities and sustain a good status of the marine environment.

4.1.6. Map

During the implementation of the project, sets of relevant maps have been prepared. Those are: map of economic developments and prioritisation (main map), map of ecological balance, map of regional development (covering near shore zone mainly), map of areas reserved for national needs, map of development of infrastructure.



Scale:1:200 000

4.1.7. Designation

The strategical document does not set the particular designations. The plan serves as a conceptual framework for further planning and regulation of particular economic activities.

4.1.8. Regulations

N/A



4.1.9. Adoption

The plan has not been adopted yet.

4.1.10. SEA

A complete SEA was elaborated including national and transnational consultations with Lithuanian and Latvian stakeholders.

4.1.11. Public participation

The materials of the plan are publicly available on the webpage of Ministry of Environment. Additionally, the plan was publically presented during national and international conferences and specific public hearings have been organized in order to inform about the status of the endeavour.

4.1.12. Transboundary consultation

Consultations were conducted with Latvian stakeholders and relevant information was sent to the Ministry of Environment in Latvia. The SEA study was of transboundary character and therefore followed the pattern of cross-border consultations as well.

4.1.13. Harmonisation with other plans

All relevant planning documents have been taken into account while preparing the plan. But, according to the hierarchy of the planning documents in Lithuania the General Plan is of top priority setting the pre-conditions for other plans to be developed.

4.1.14. Monitoring

N/A

4.1.15. Electronic resources

The maps, SEA study and the text are available on the website of the Ministry of Environment (www.am.lt)

5. What countries want to share

N/A

6. New developments / current status

The plan is currently in the adoption process.