

Coordination of shipping routes and other maritime uses in Mecklenburg- Vorpommern, Germany

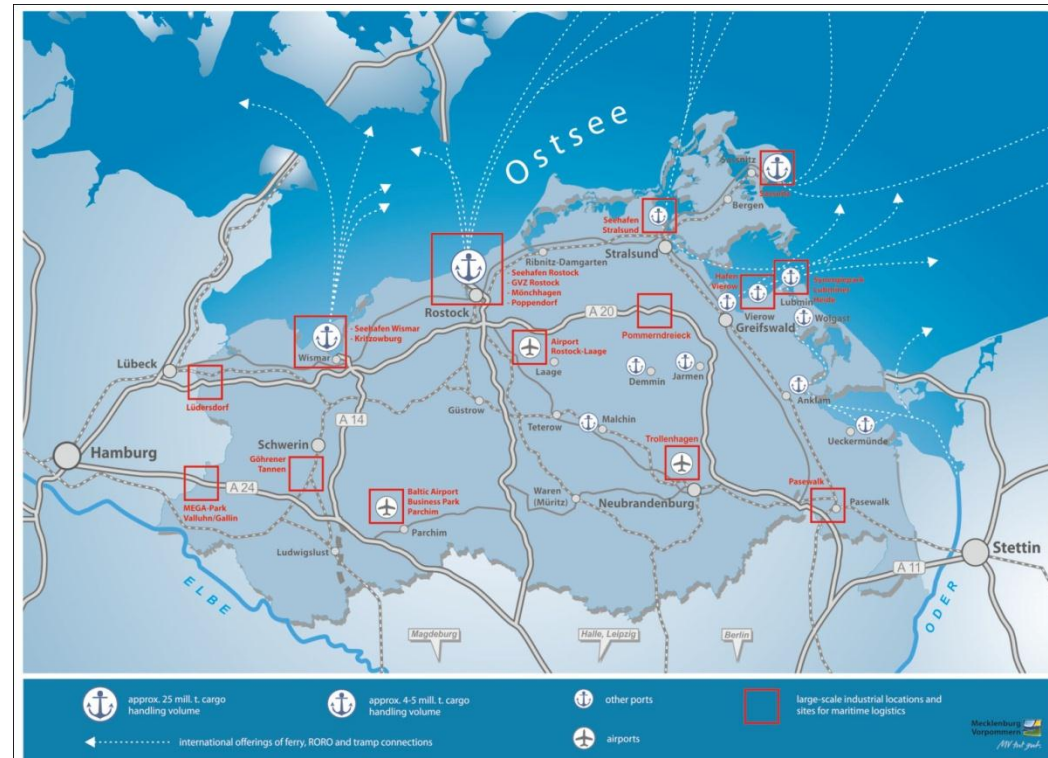


**Bothnian
Green
Logistic
Corridor**



Mecklenburg-Vorpommern

- ~ 1.6 m inhabitants (70/km²)
- main cities: Rostock (205,000), Schwerin (95,000), Neubrandenburg (65,000)
- Neighboring metropolises: Hamburg, Berlin, Copenhagen
- we have:
 - Modern ports with various ferry and RoRo connections
 - Efficient transport networks
 - Broad range of logistics services



BGLC project

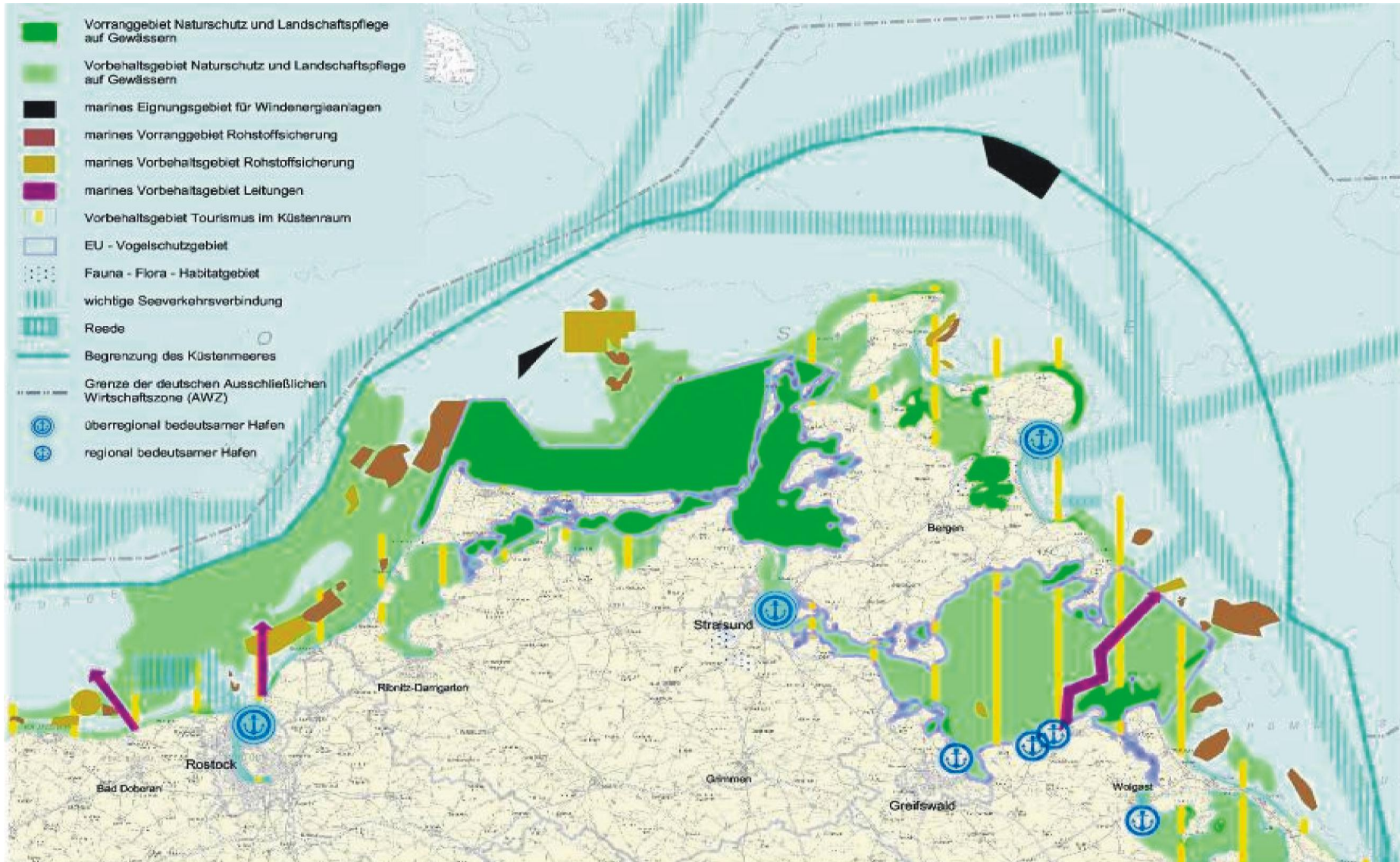
- 29 partners (SE, FI, NO, D, PL)
- 61 associated partners
- project period July 2011 – March 2014
- budget 4.8 mio €



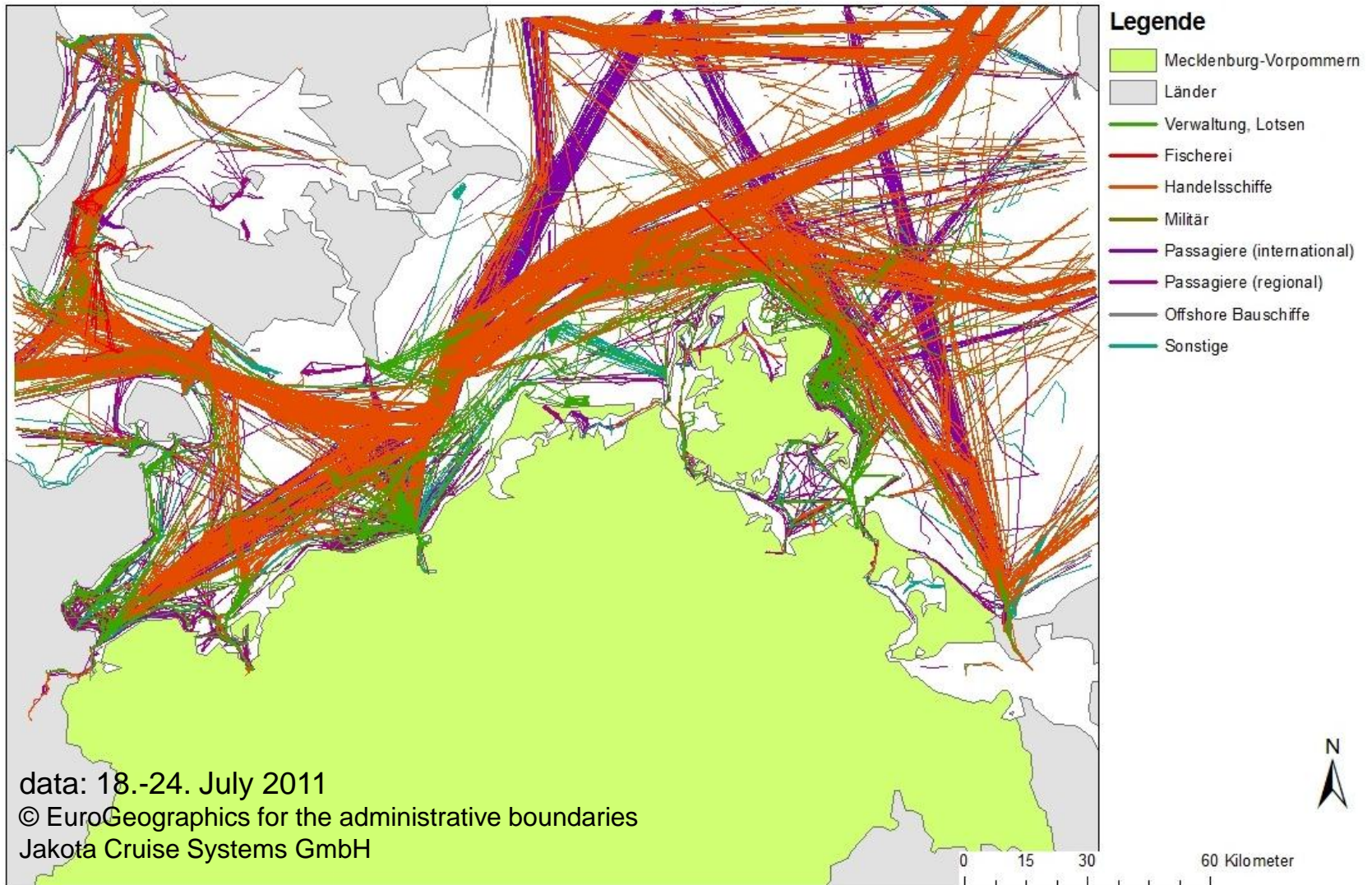
Spatial planning in MV

- currently we are updating our State Spatial Development programme (part of our state's law)
- contents: goals and principles for our state's spatial planning
 - priority areas = when planning within this area, this user has priority above all other interests
 - reserve areas = when planning within this area, you have to pay special attention to this user

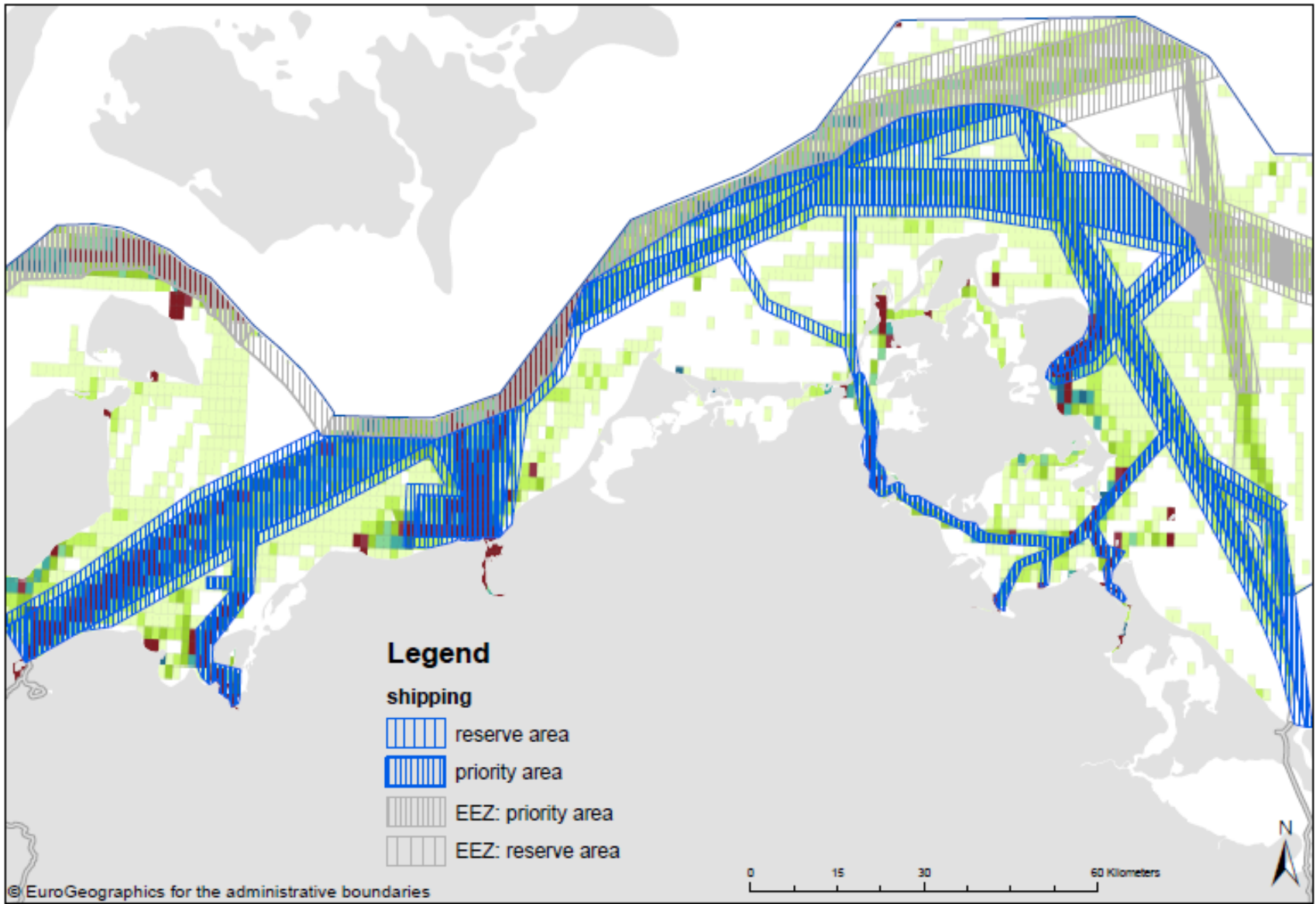
The current programme



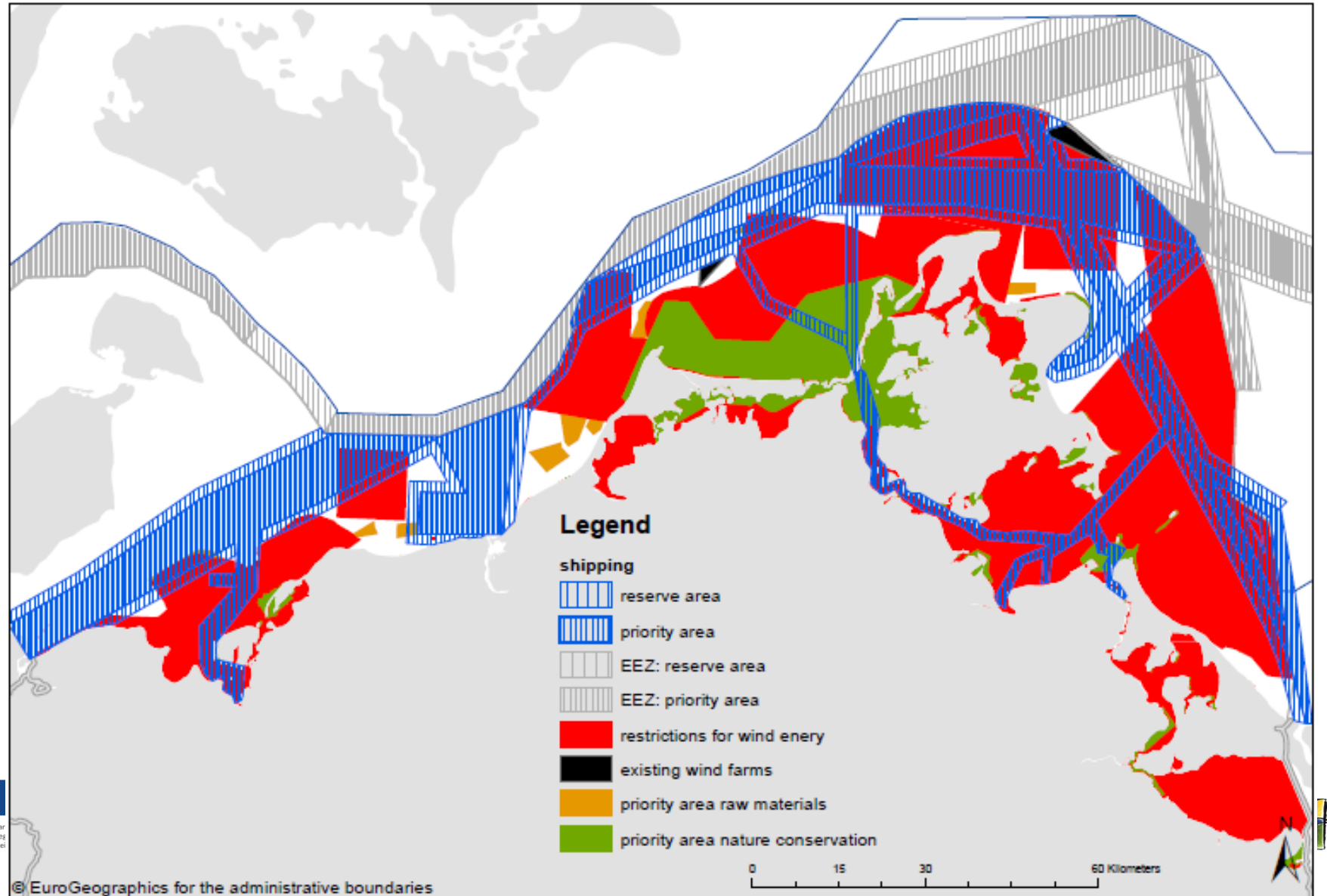
Step I: collecting AIS data



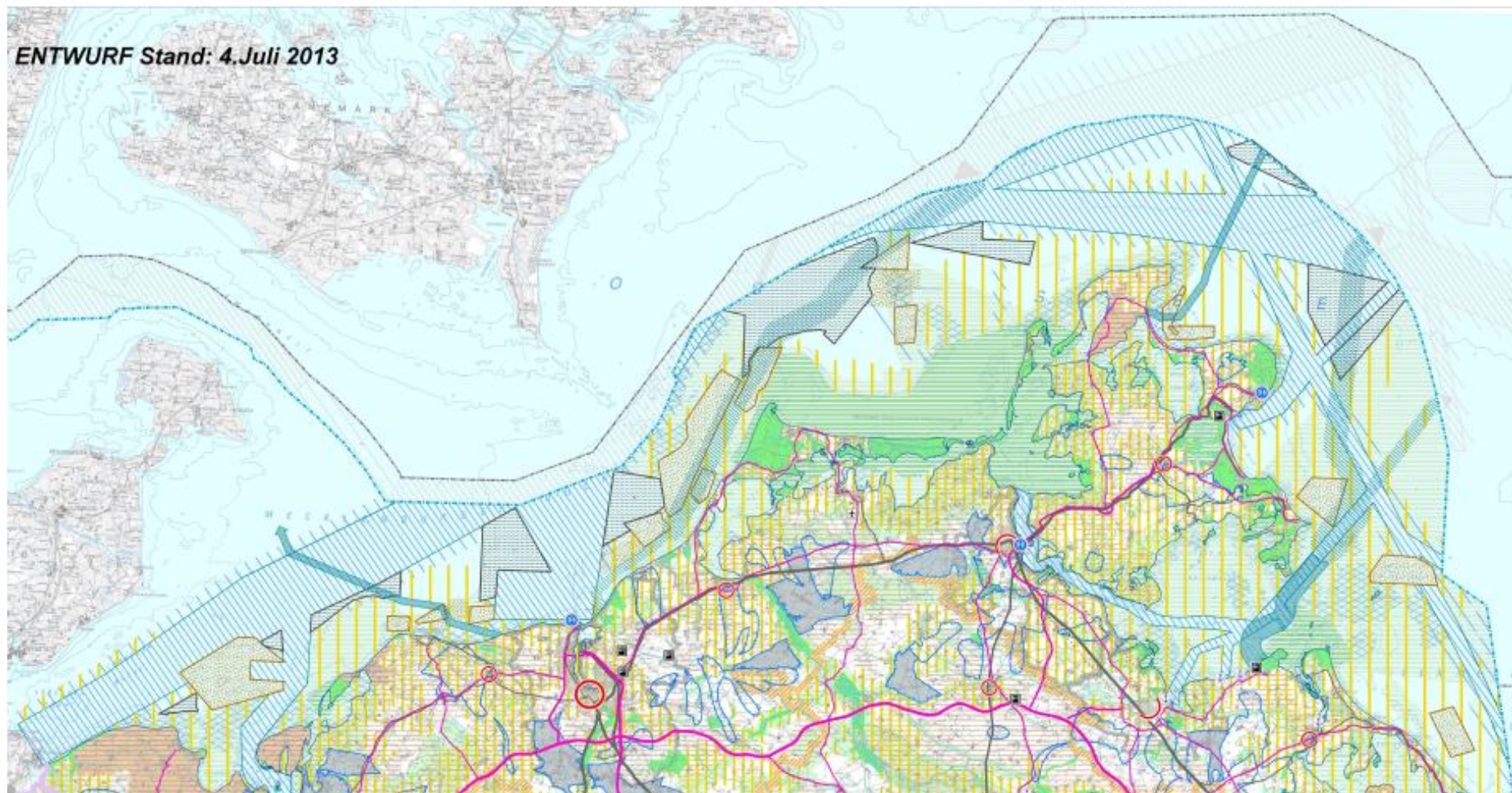
Step II: drafting priority areas for shipping



Step III: integrating other goals



Resulting first draft



Dialogue with the shipping industry



- increase of user demands = increase of conflicts
- the shipping sector needs time to adapt to the situation

Looking for scientific support: a BGLC study

task: finding a compromise between green energy and shipping

- ensuring free access to ports
- avoiding long detours / finding a balance between green energy production and higher energy consumption because of detours
- minimizing the collision risk (risk analysis)
- Finding a true green solution for both shipping and energy production

Solutions for this "conflict"?

There is no real suggestion we can make yet, but:

- dialogue is important!
 - the shipping industry knows little about spatial planning
 - spatial planning knows little about shipping and what is required to keep sea transport safe
 - → both sides need to get the feeling that their concerns / needs are taken seriously
- it is important to shape a "green future" together
- don't forget that both shipping and offshore wind farms are very important for the economic development of coastal regions

Thank you for your attention!

Gesa Köhler

gesa.koehler@em.mv-regierung.de

+49-385-588-8423

