



# Regional OWE planning in the context of LT MSP

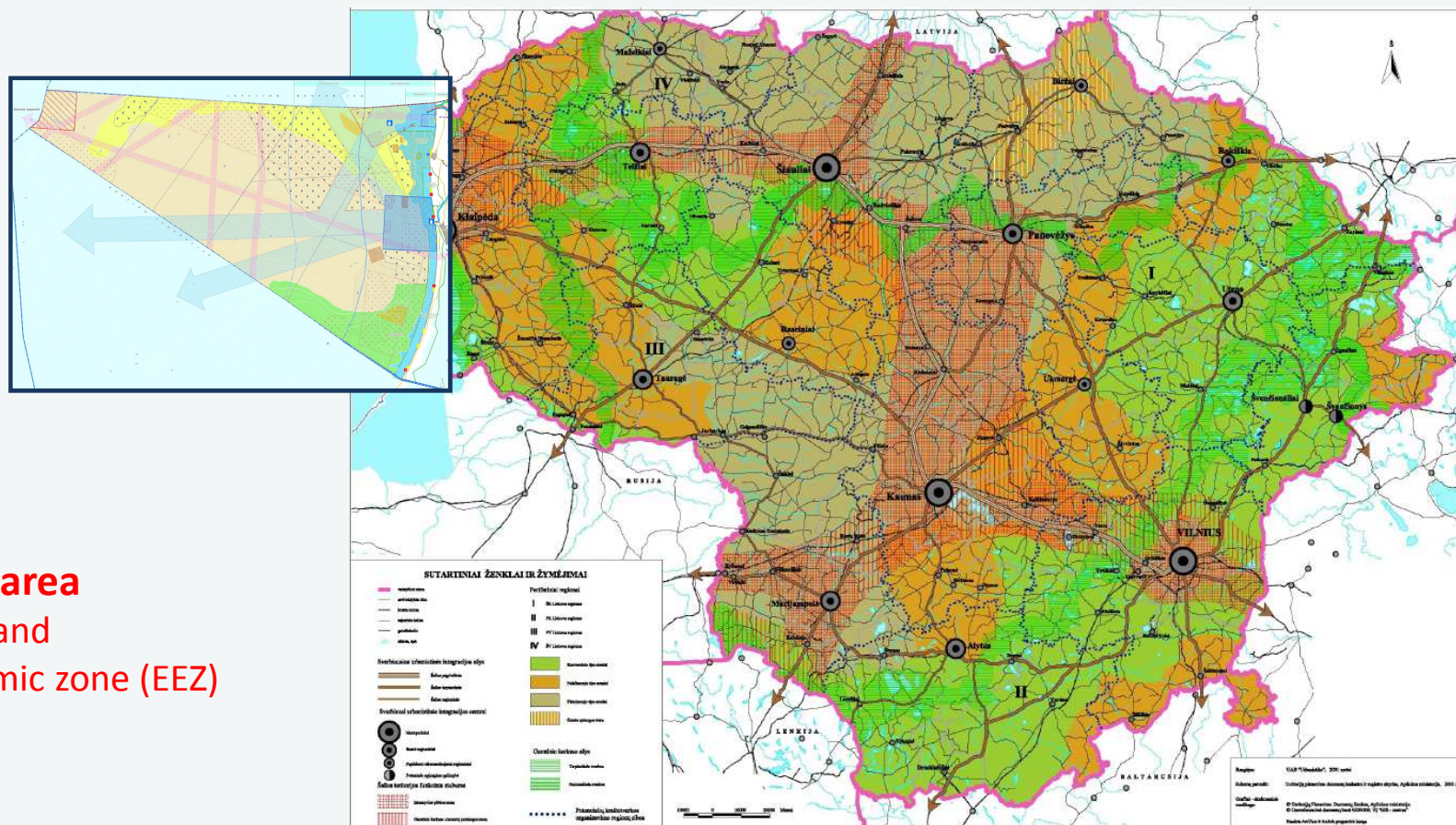
N.Blažauskas, CORPI  
Vilnius, 2013 November



Part-financed by the European Union  
(European Regional Development Fund)

## AIM:

To foster the development of the maritime space of Republic of Lithuania



+ ~10% of the area  
Territorial (TW) and  
exclusive economic zone (EEZ)

## OBJECTIVE:

To extend the existing General Plan of Lithuania with marine solutions



## TASKS:

**Stocktake the existing natural resources and current use and protection**

**Set the strategic priorities for future use**

## TOOLS:

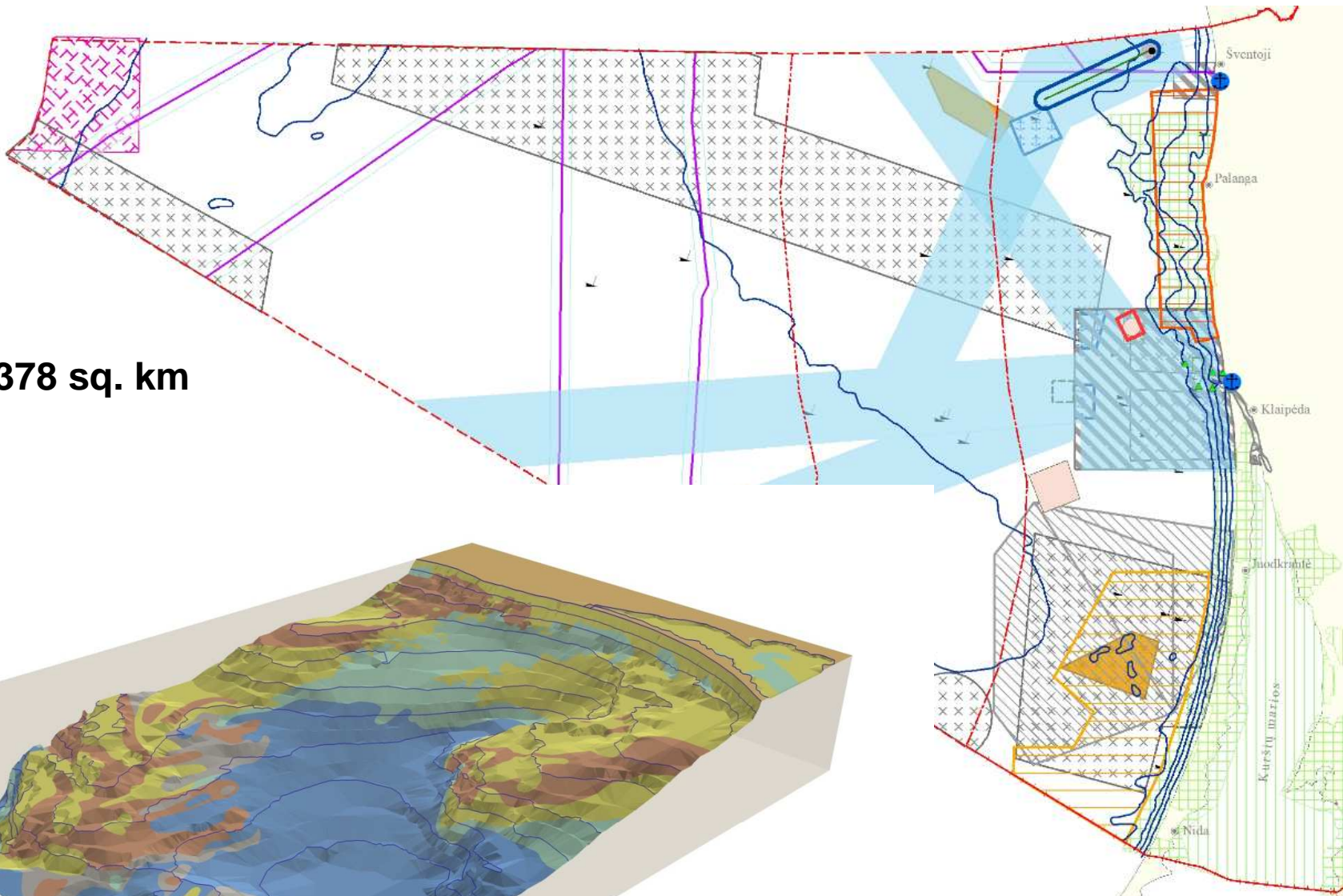
**Applying MSP principles**

**Integrating Land and Sea**





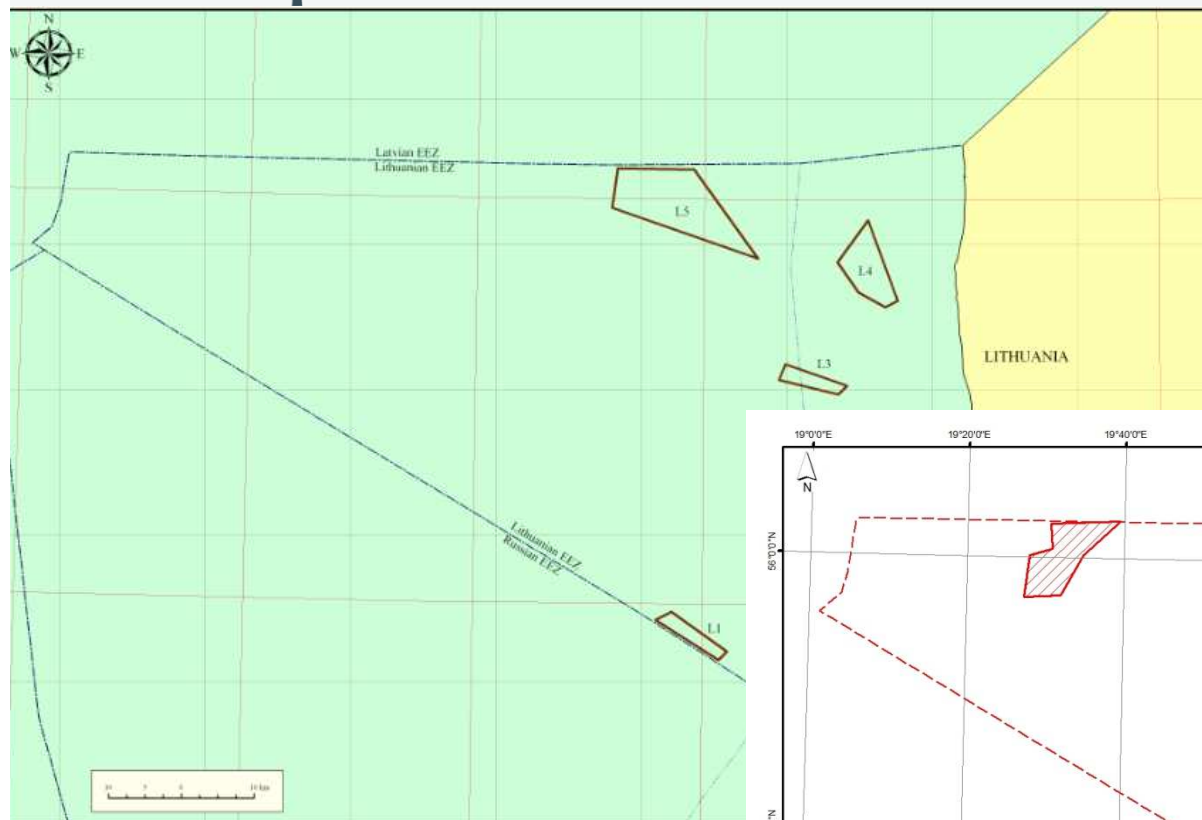
**AREA - 6378 sq. km**



**SUITABLE DEPTHS 20-50 m - 2737 sq. km**

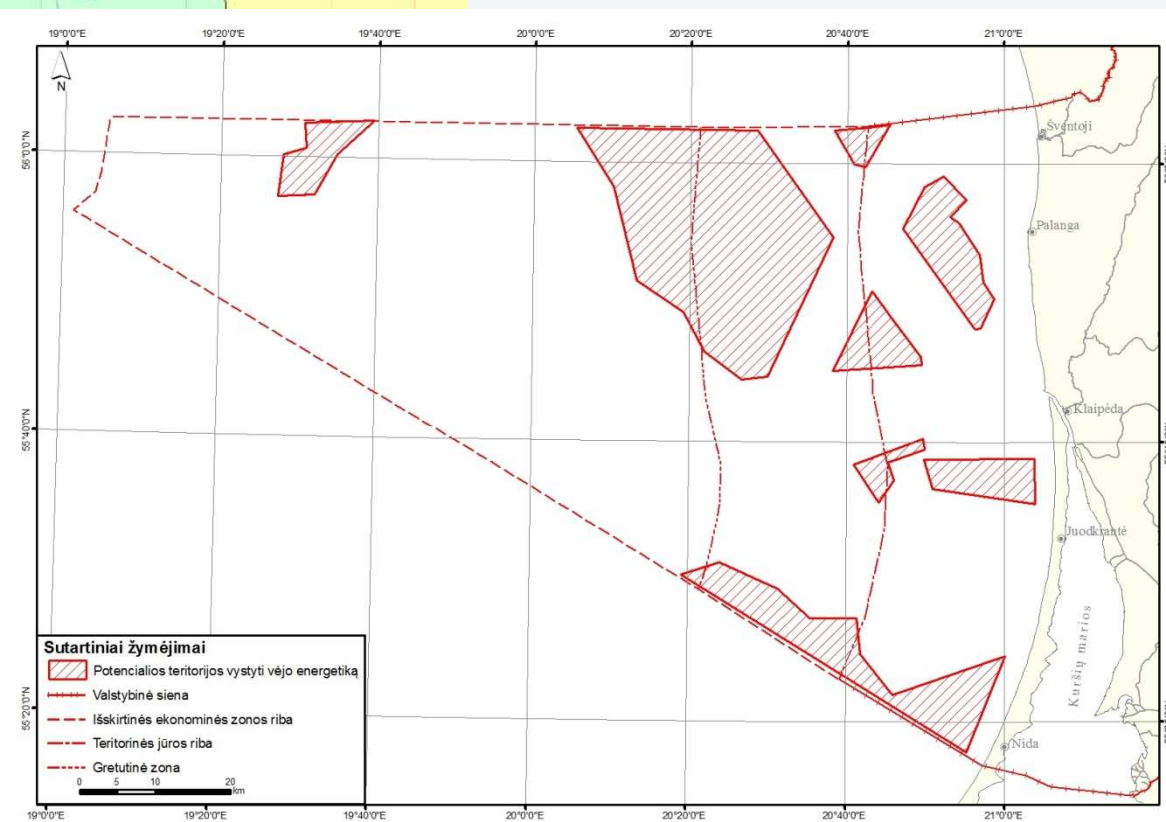
**“FREE” - 1256 sq. km**

## TWO FEASIBILITY STUDIES:



**5 zones**  
**TOTAL AREA: 237 sq.km**  
**Potential Capacity: 766 MW**

**6 zones**  
**TOTAL AREA: 1210 sq. km**  
**Potential Capacity: 5436 MW**



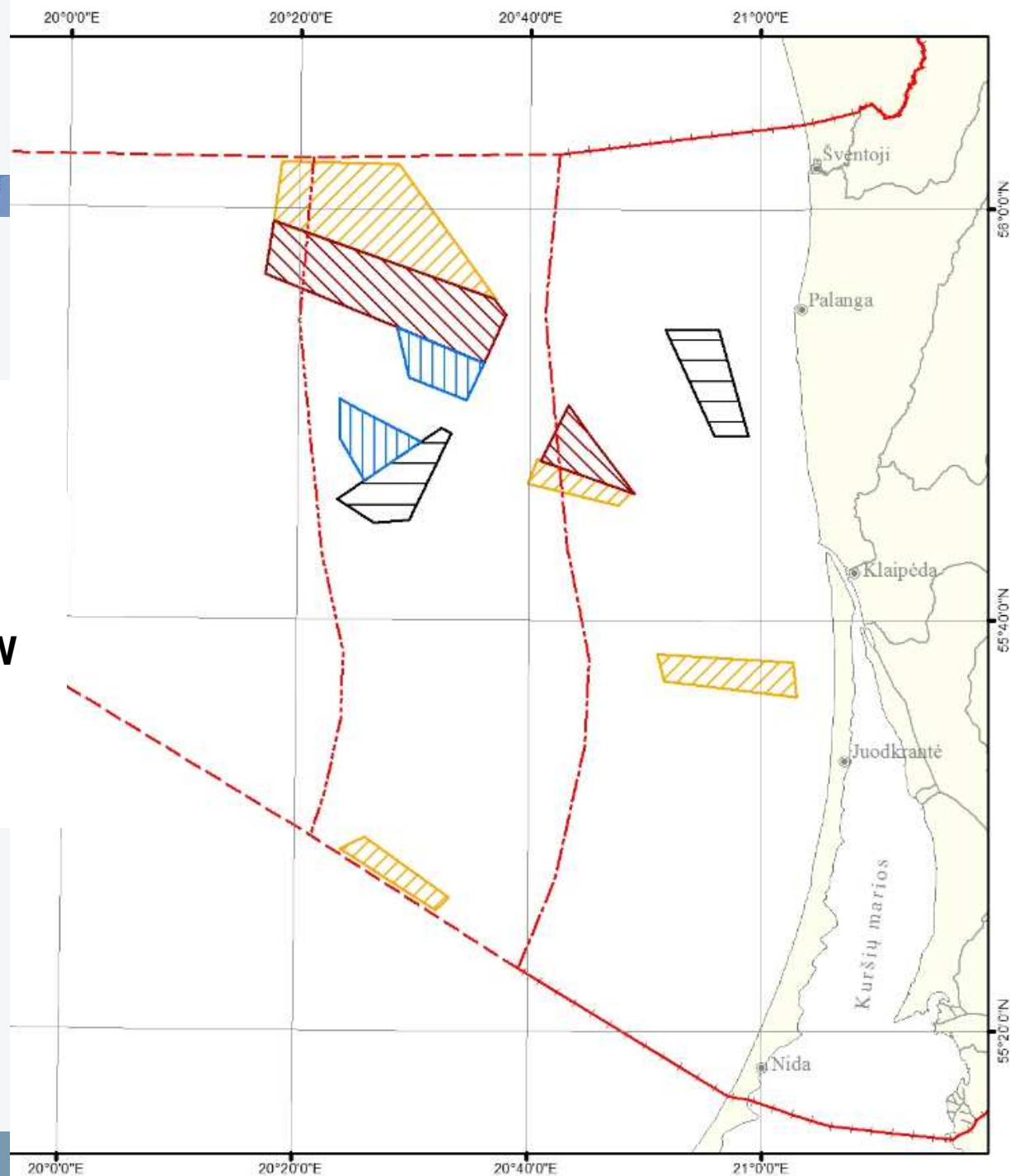
## ONGOING PROJECTS:

## ONGOING PROJECTS:

4 EIA studies

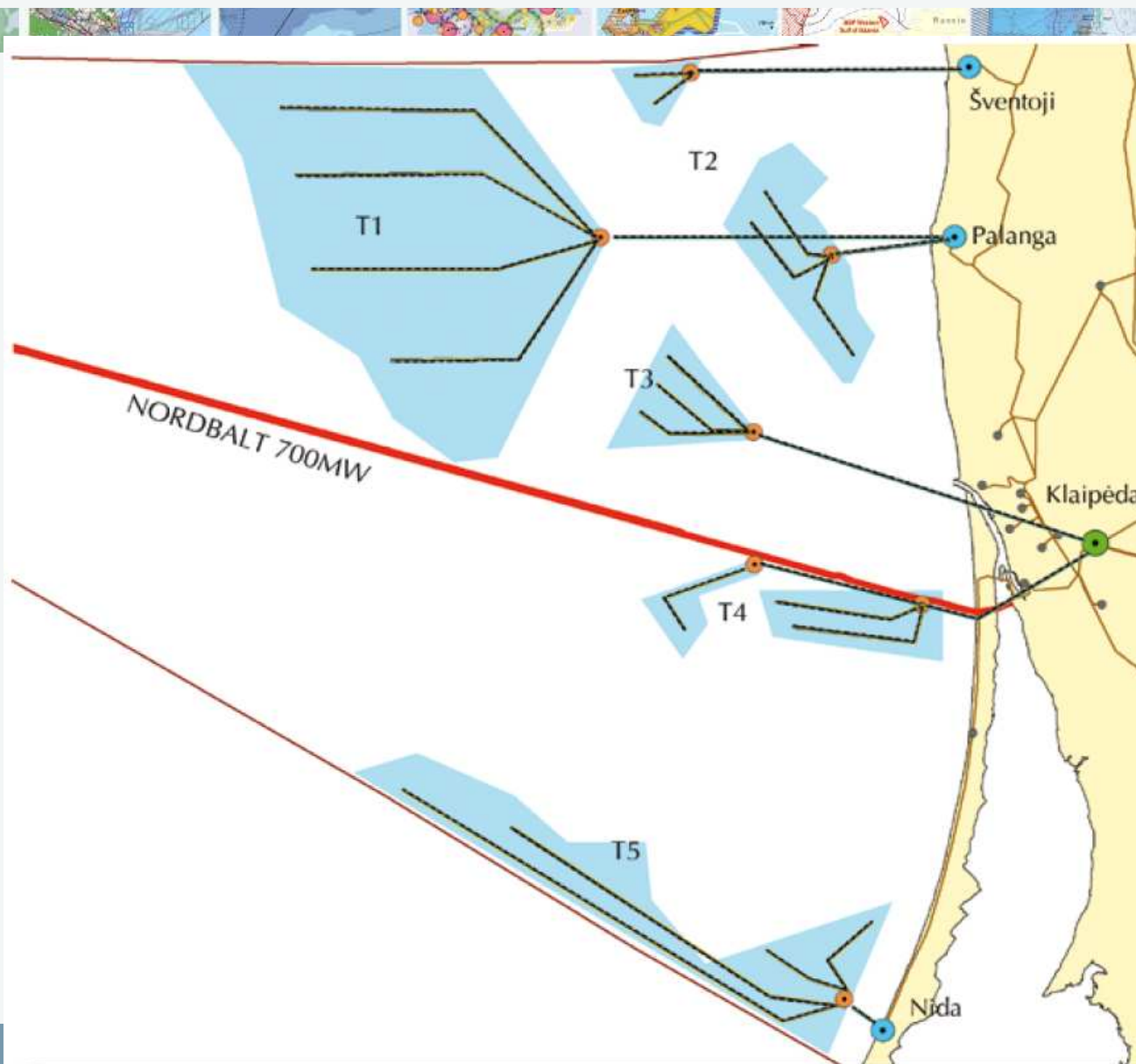
10 zones

Capacity concerned: 2640 MW

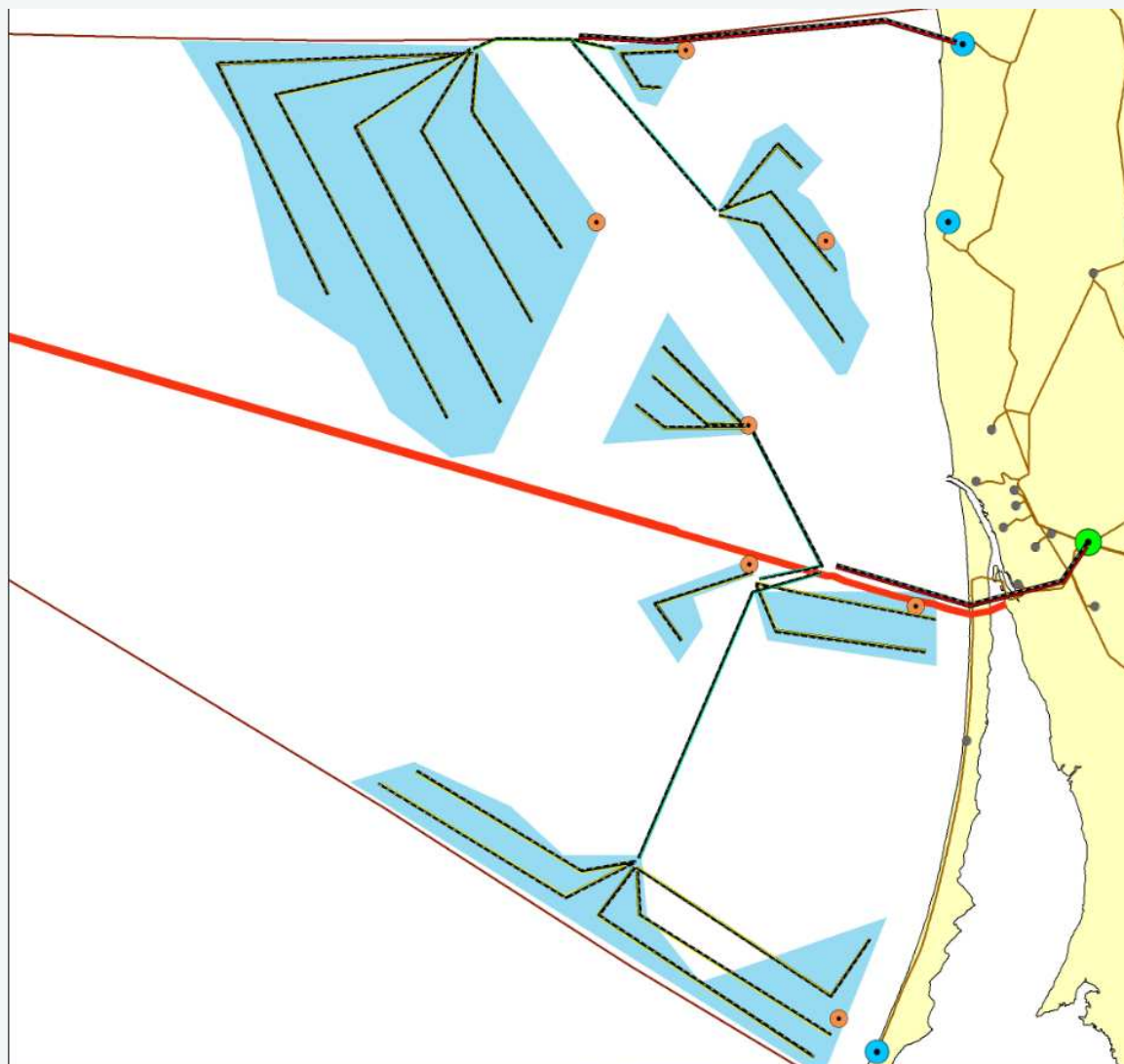




## CONNECTION - Disintegrated



## CONNECTION - Integrated







## **TIMELINES:**

**2012-07 CURRENT SITUATION/STOCKTAKING – ready**

**2012-12 CONCEPTs of LT-MSP – consultations**

**2012-12/2013-01 SEA for MSP solutions**

**2013-12 LT-MSP solutions ready for approval/transborder acceptance**

# MSP principles



## **Sustainability.**

Spatial planning addresses economic prosperity, social well-being and environmental targets at the same time and balances their respective needs.

## **Pan-Baltic thinking.**

Considering the whole Baltic Sea ecosystem and the whole Baltic Sea as a planning space.

## **Pan-Baltic priorities.**

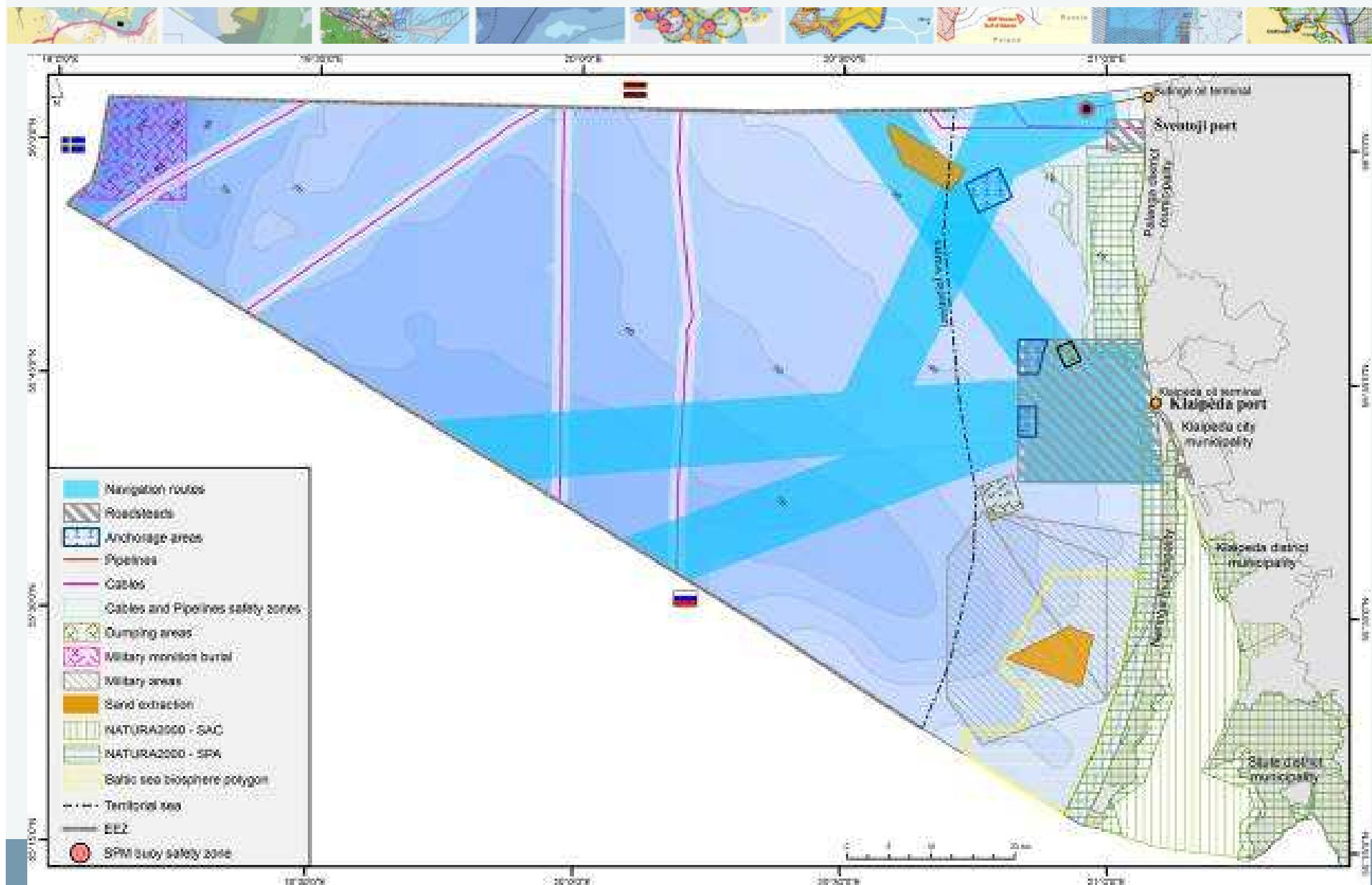
The following cannot be achieved at a national or sub-national level alone:

- a healthy marine environment
- a coherent pan-Baltic energy policy
- safe, clean and efficient maritime transport
- sustainable fisheries

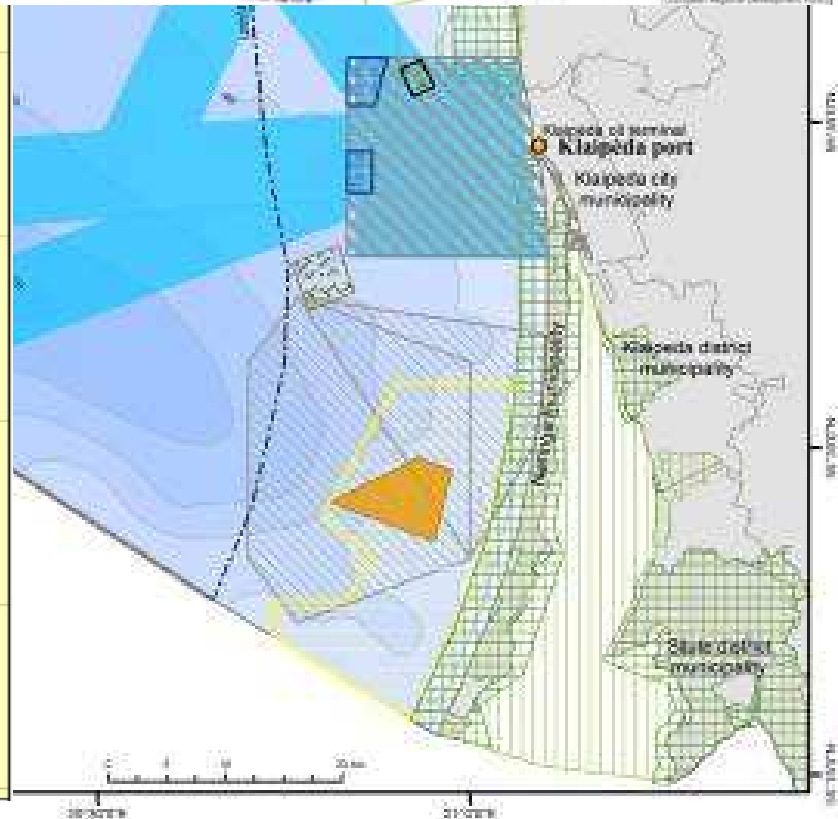
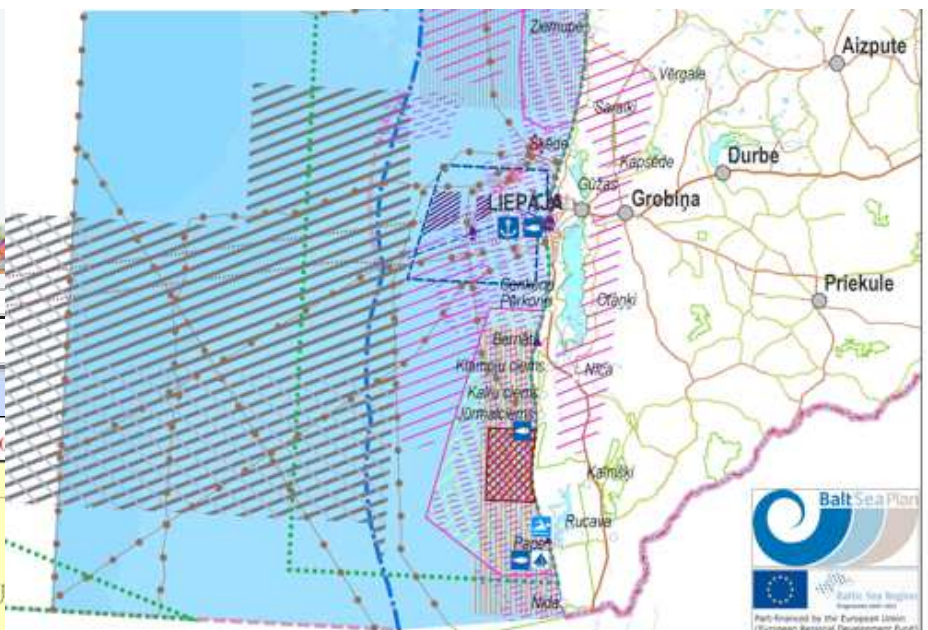
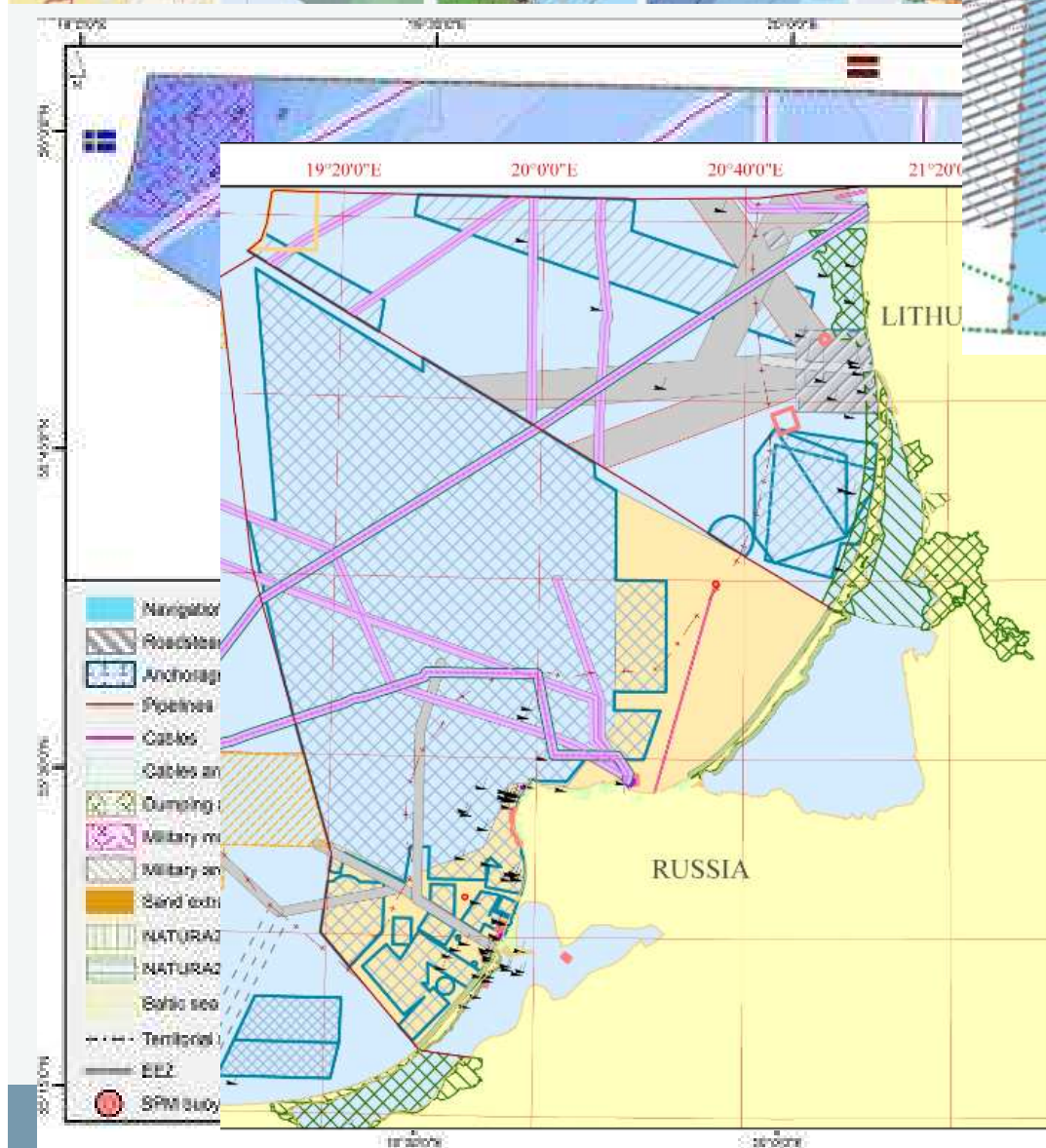
## **Spatial efficiency:**

Uses are concentrated as much as possible to keep other areas free, and co-uses, synergies and multiple spatial use are promoted.

# CURRENT USE

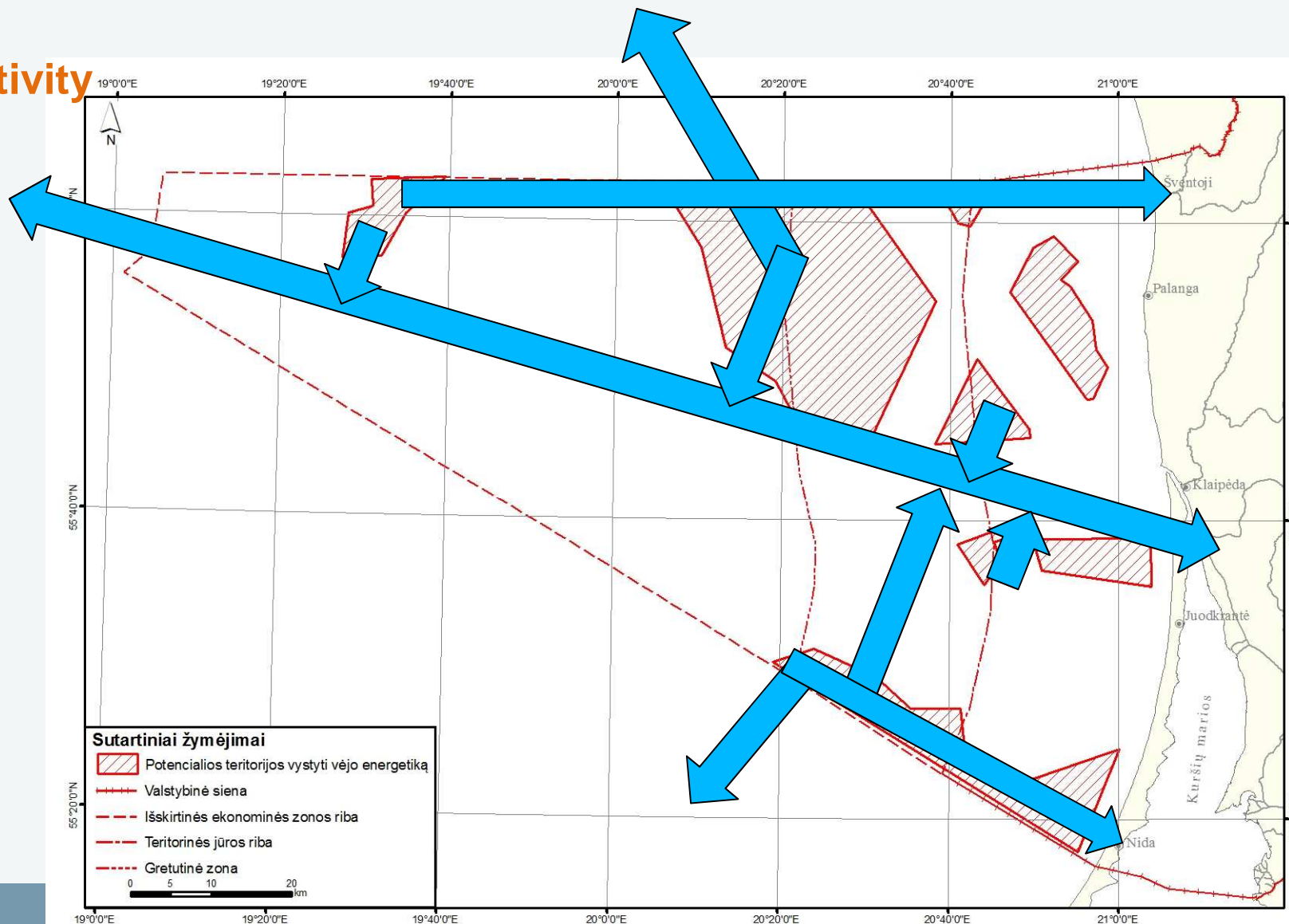




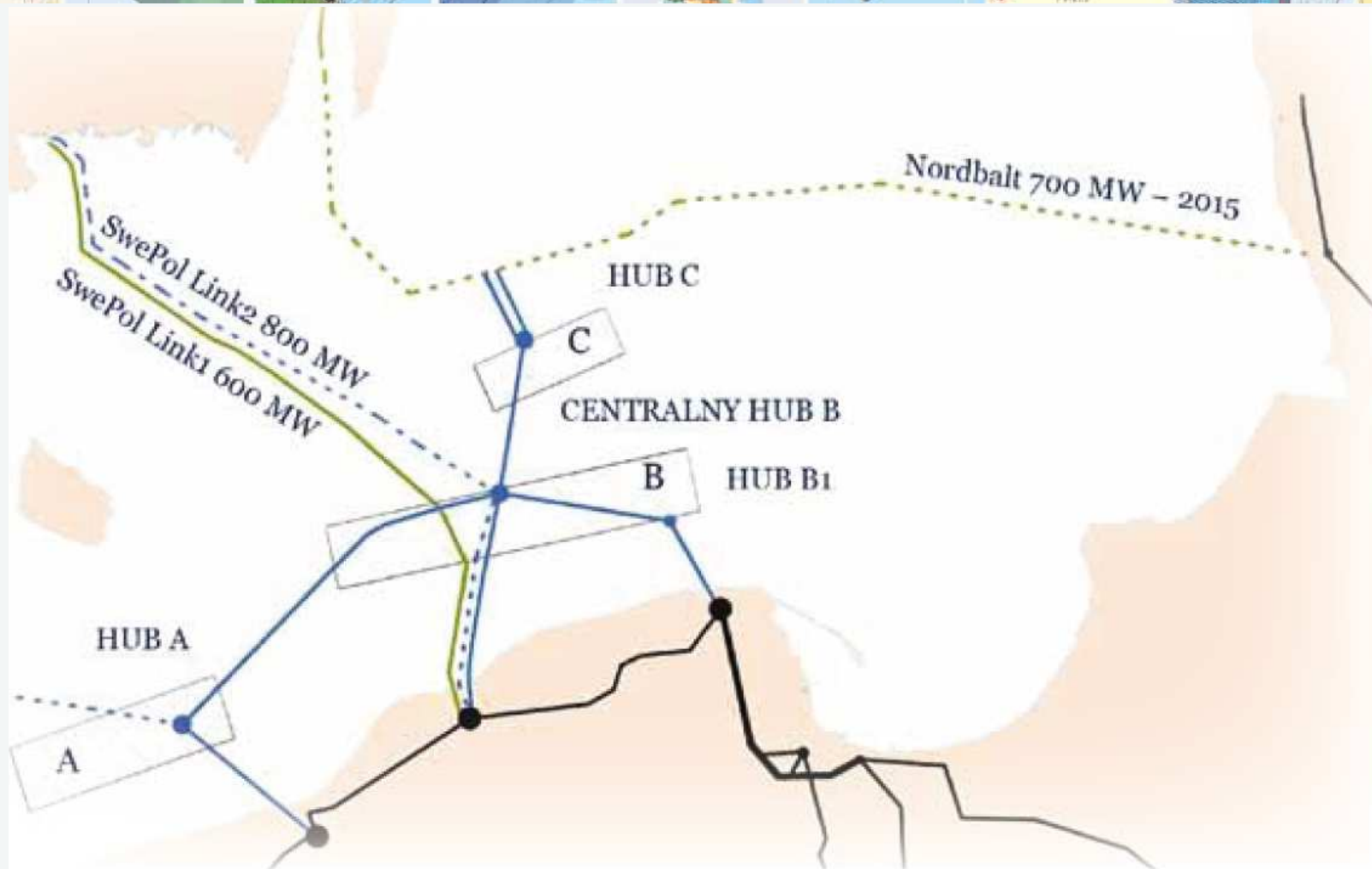


# PLANNING PRINCIPLES

## Connectivity



## POLAND OWE INTEGRATION INTO NORDBALT



*Concept of the Polish Offshore Grid by 2030.*

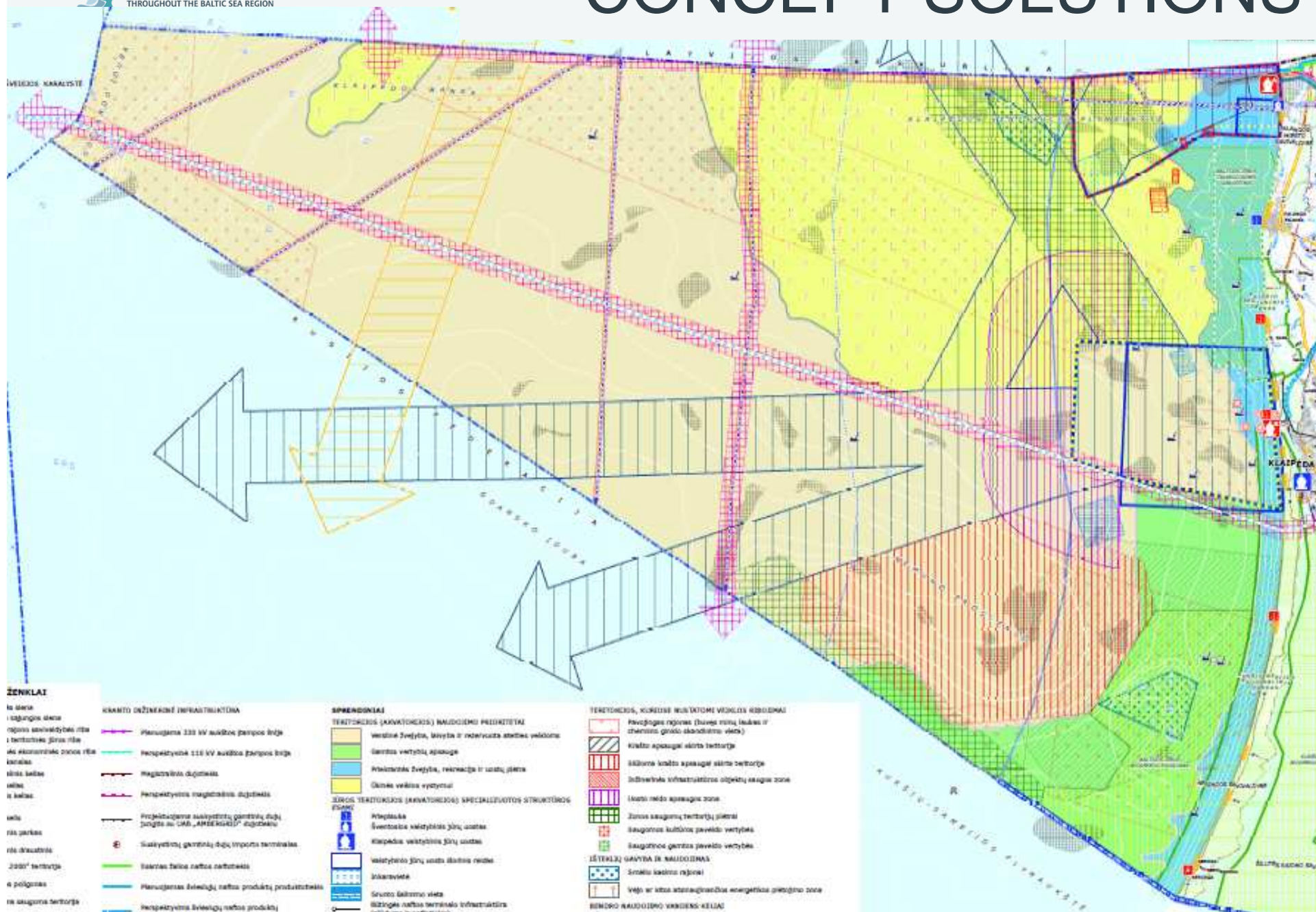




LNG  
ROADSTEAD

# MILITARY RADAR

# CONCEPT SOLUTIONS



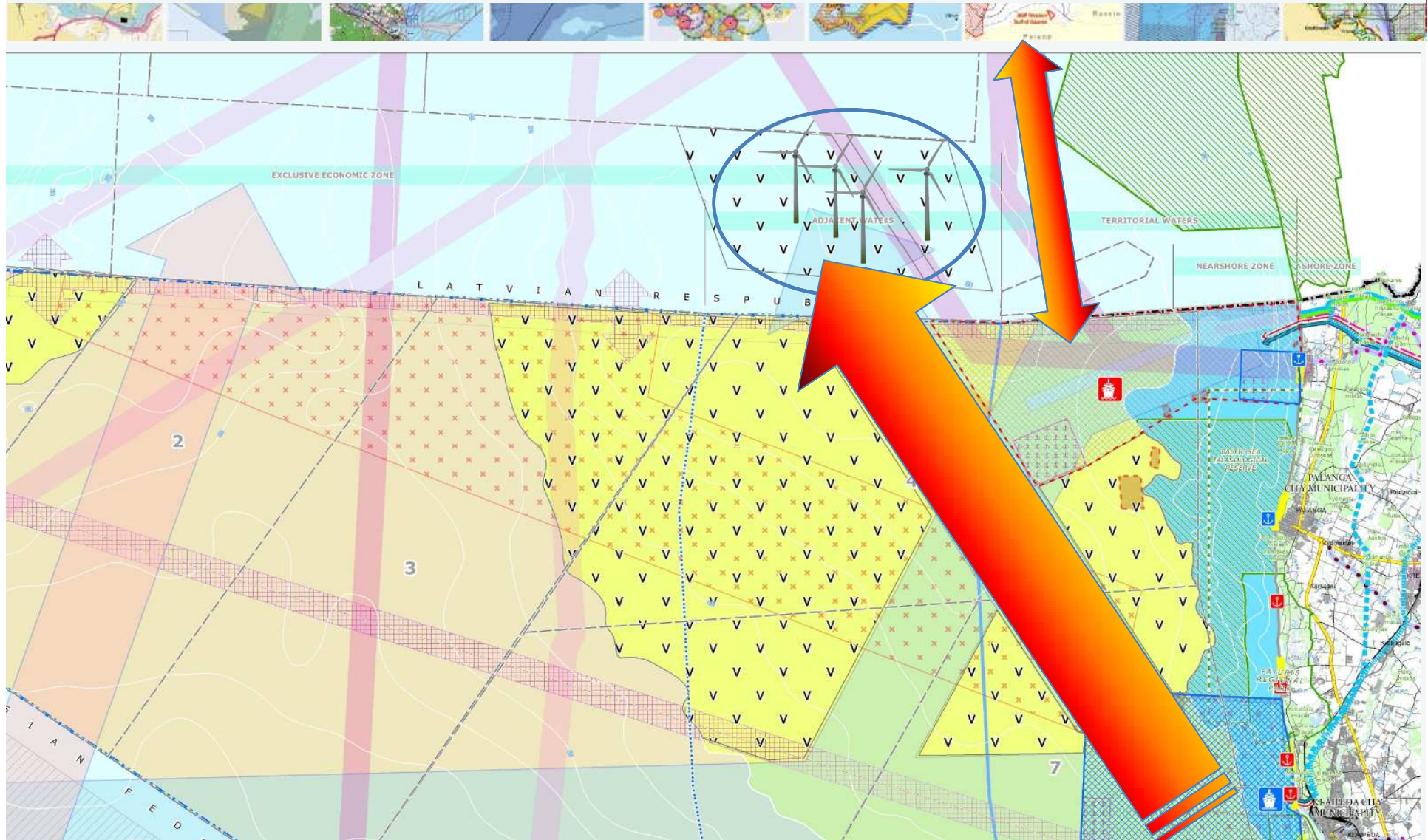


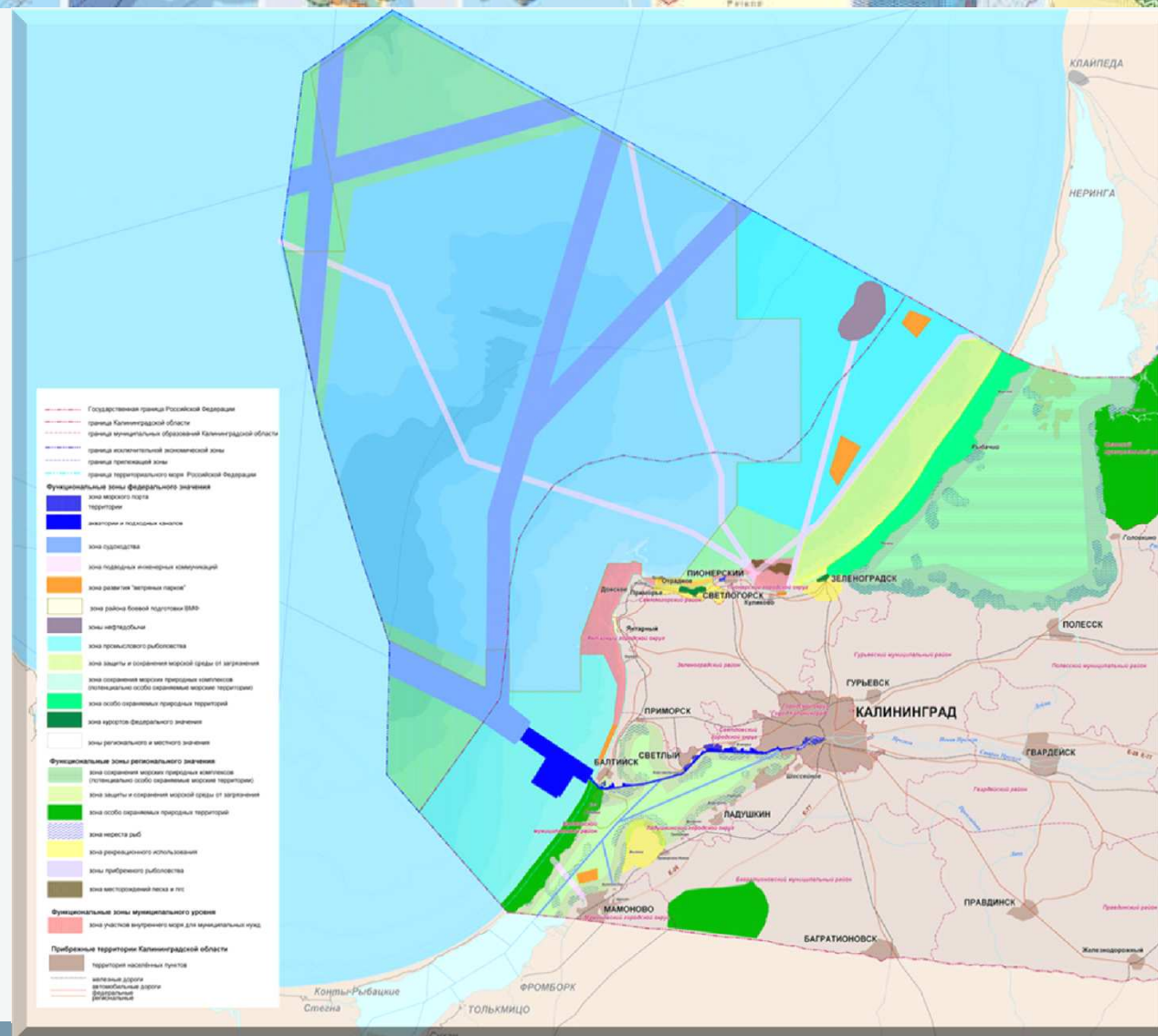
# OPPORTUNITIES





# CONFLICTS







Thank you,  
N.Blažauskas, CORPI  
[nb@corpi.ku.lt](mailto:nb@corpi.ku.lt)