

HELCOM



Baltic Marine Environment Protection Commission

# ***Baltic Sea Protected Areas and Natura 2000 areas***

PartiSEApate workshop  
Riga 31.10–1.11.2013

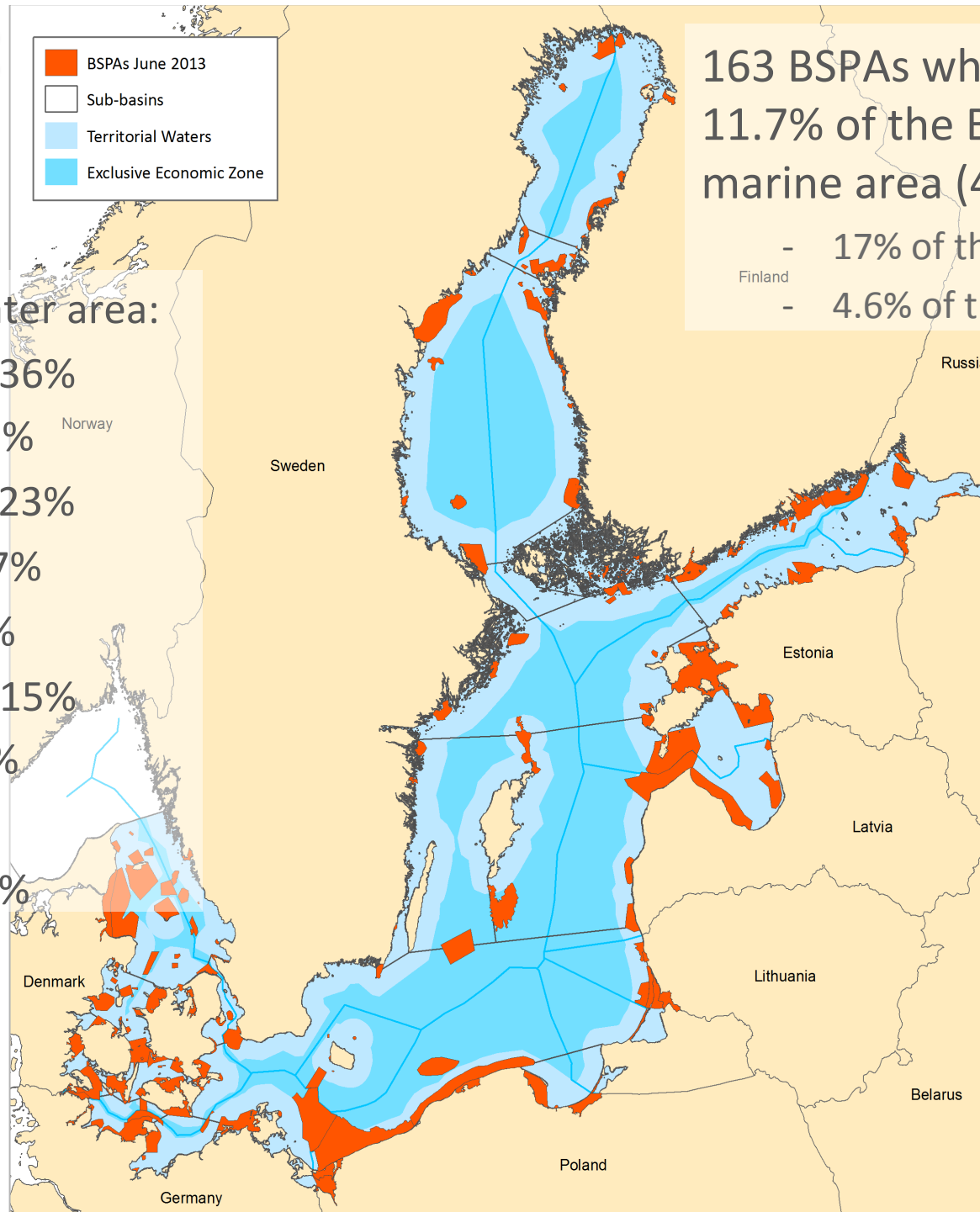
**Janica Borg**

**Project Researcher, HELCOM**

# BSPAs: Areas 2013

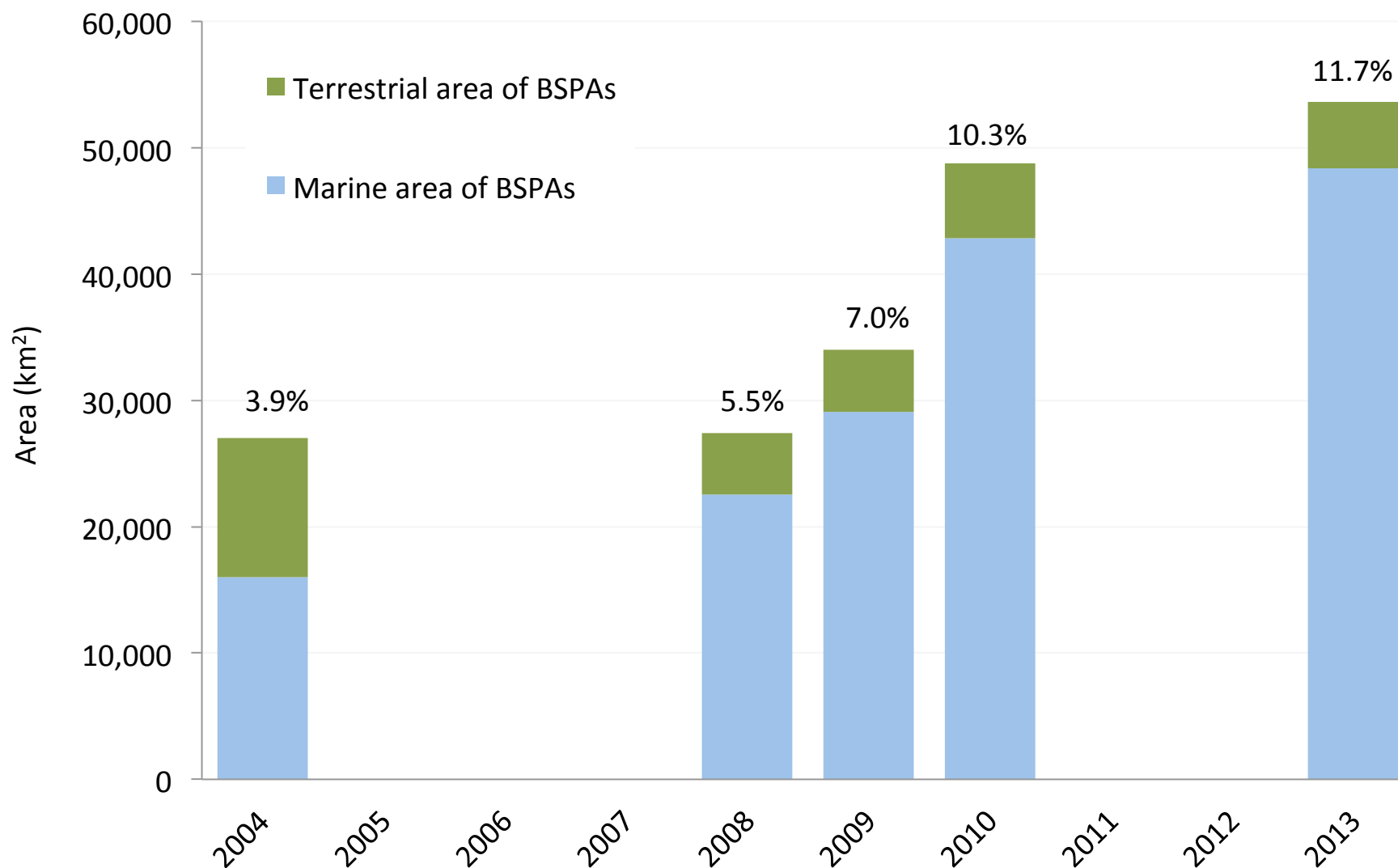
Protected water area:

- Germany 36%
- Poland 25%
- Denmark 23%
- Estonia 17%
- Latvia 15%
- Lithuania 15%
- Finland 7%
- Russia 4%
- Sweden 5%



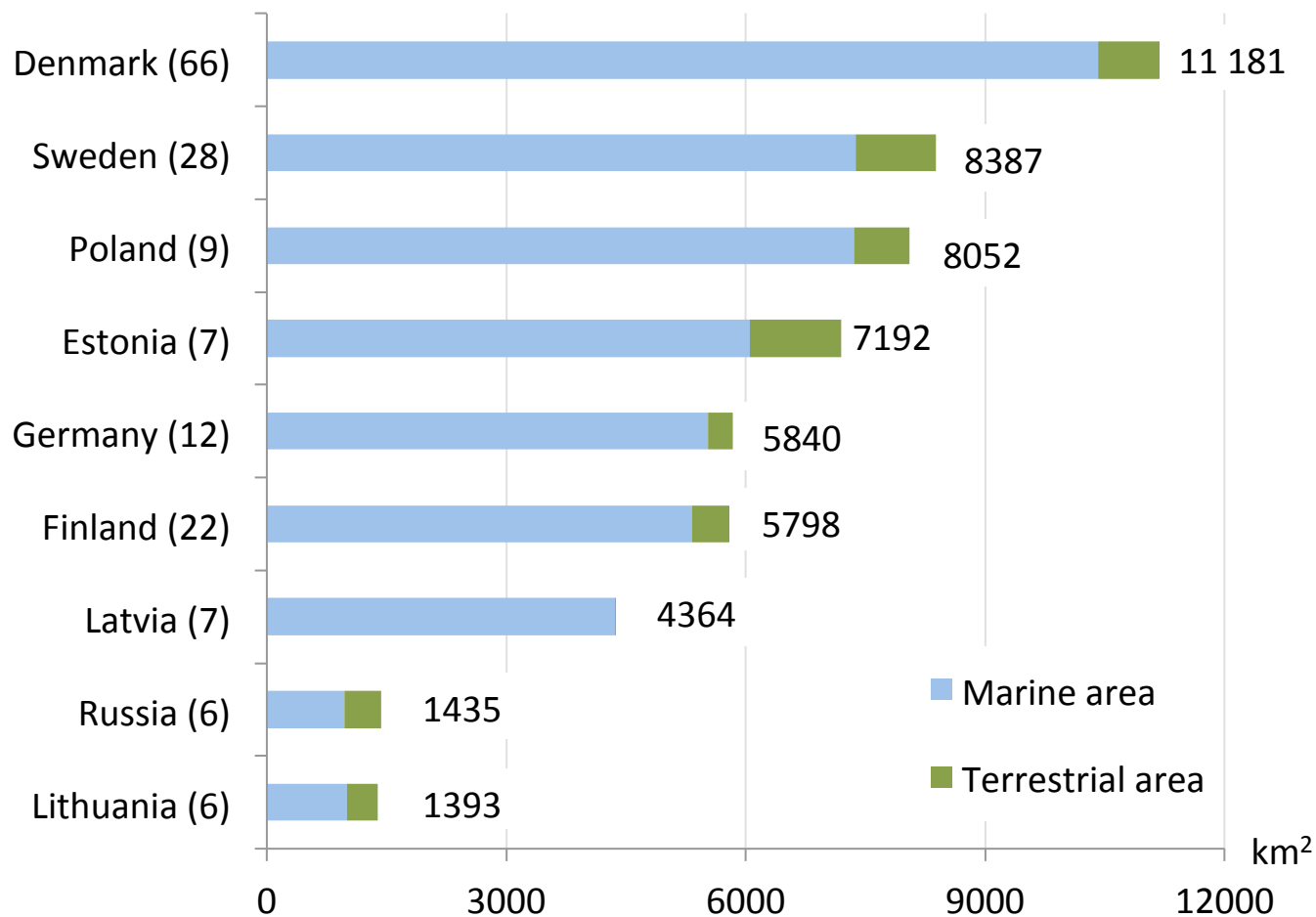
163 BSPAs which cover  
11.7% of the Baltic Sea  
marine area (48 392 km<sup>2</sup>).

- 17% of the TW
- 4.6% of the EEZ



Development of the HELCOM MPAs since 2004.

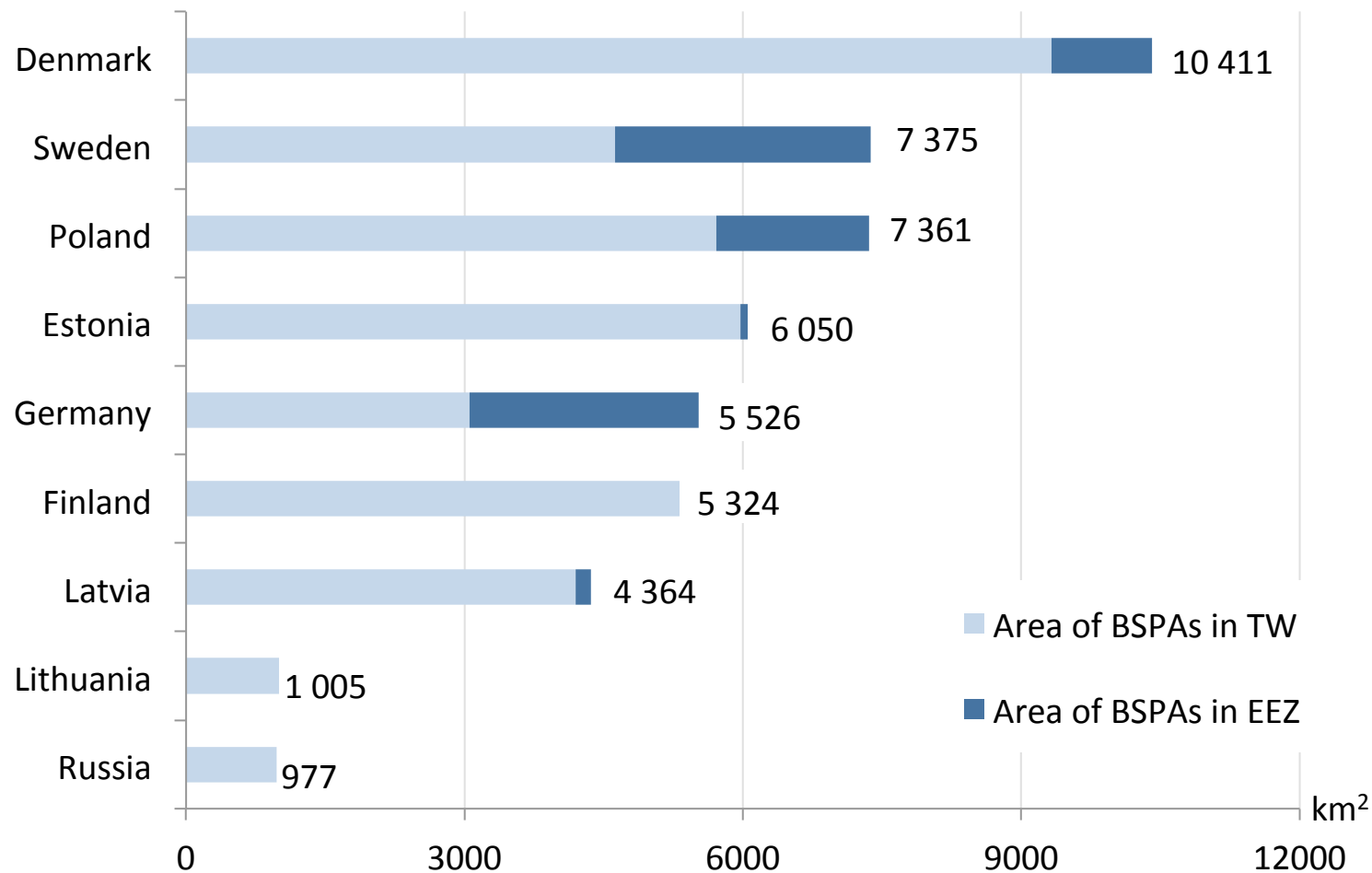
Percent values above columns describe only marine areas of the network.



The marine and terrestrial areas of the BSPAs network.

The total area (km<sup>2</sup>) is given beside each bar, and the number of BSPAs is given in brackets after the country name.

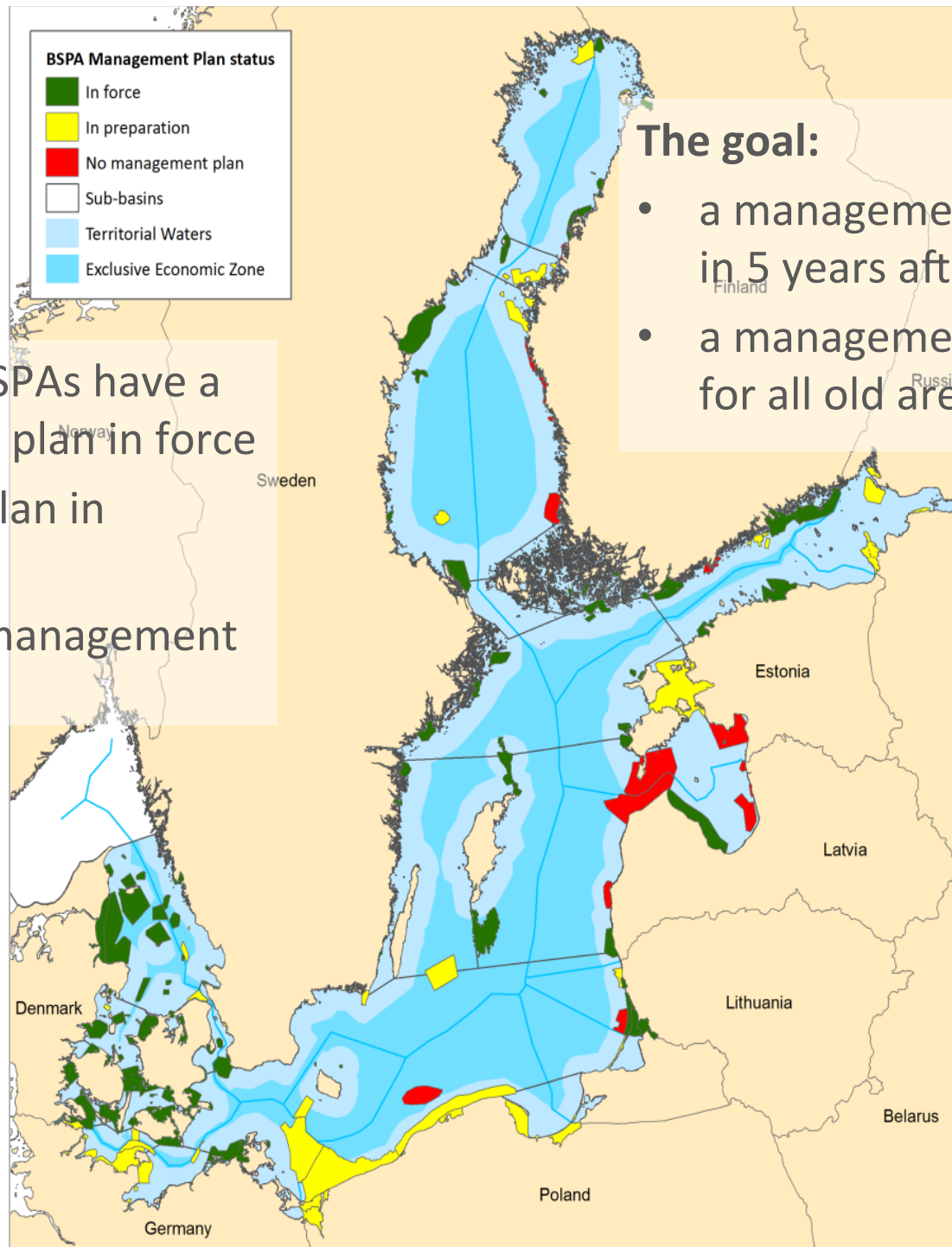




Coverage in the territorial waters (TW) and the exclusive economic zone (EEZ).

The total marine area (km<sup>2</sup>) covered by BSPAs per each country is given after the column.

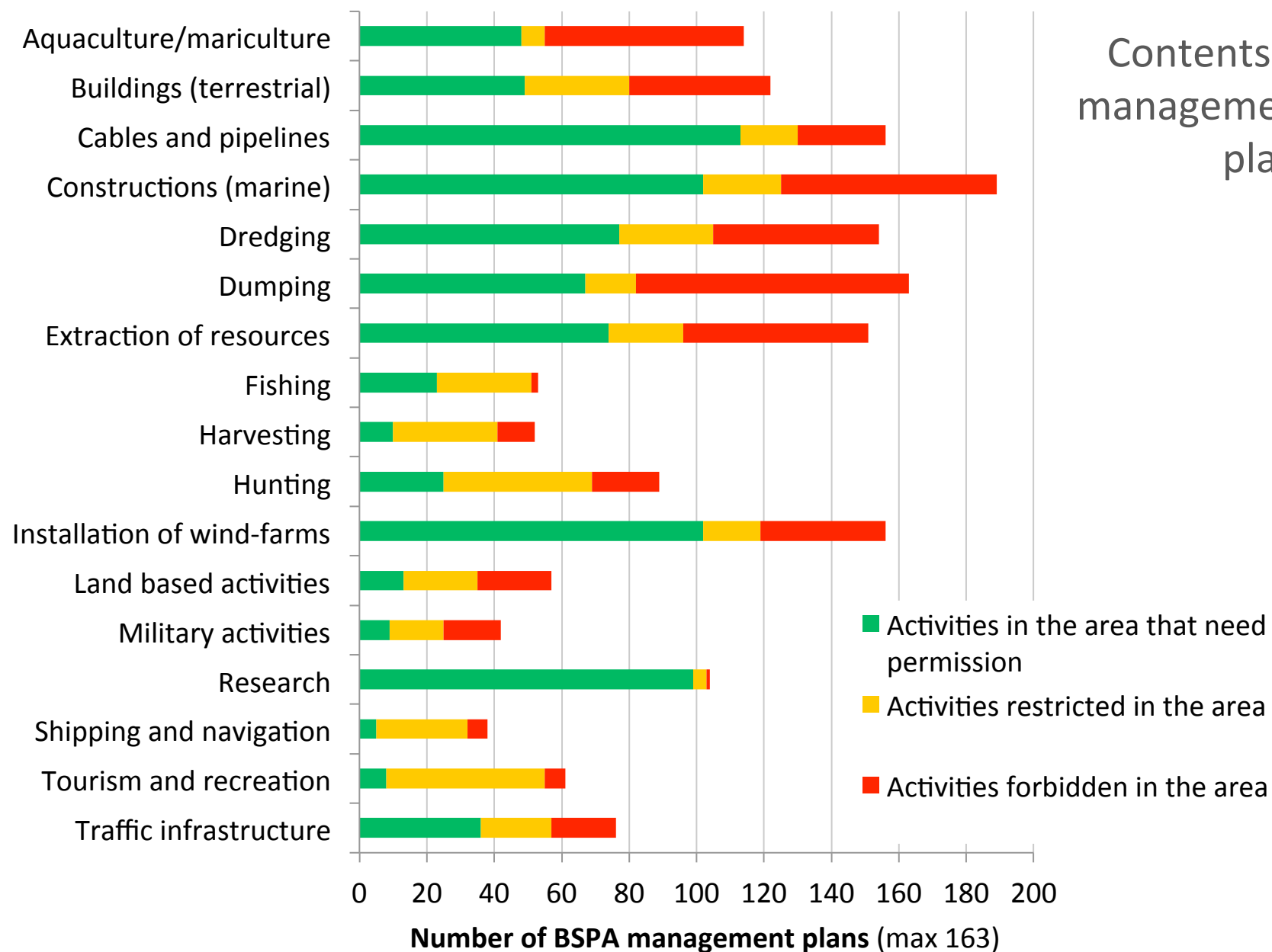
- 65% of the BSPAs have a management plan in force
- 26% have a plan in preparation
- 9% have no management plan



### The goal:

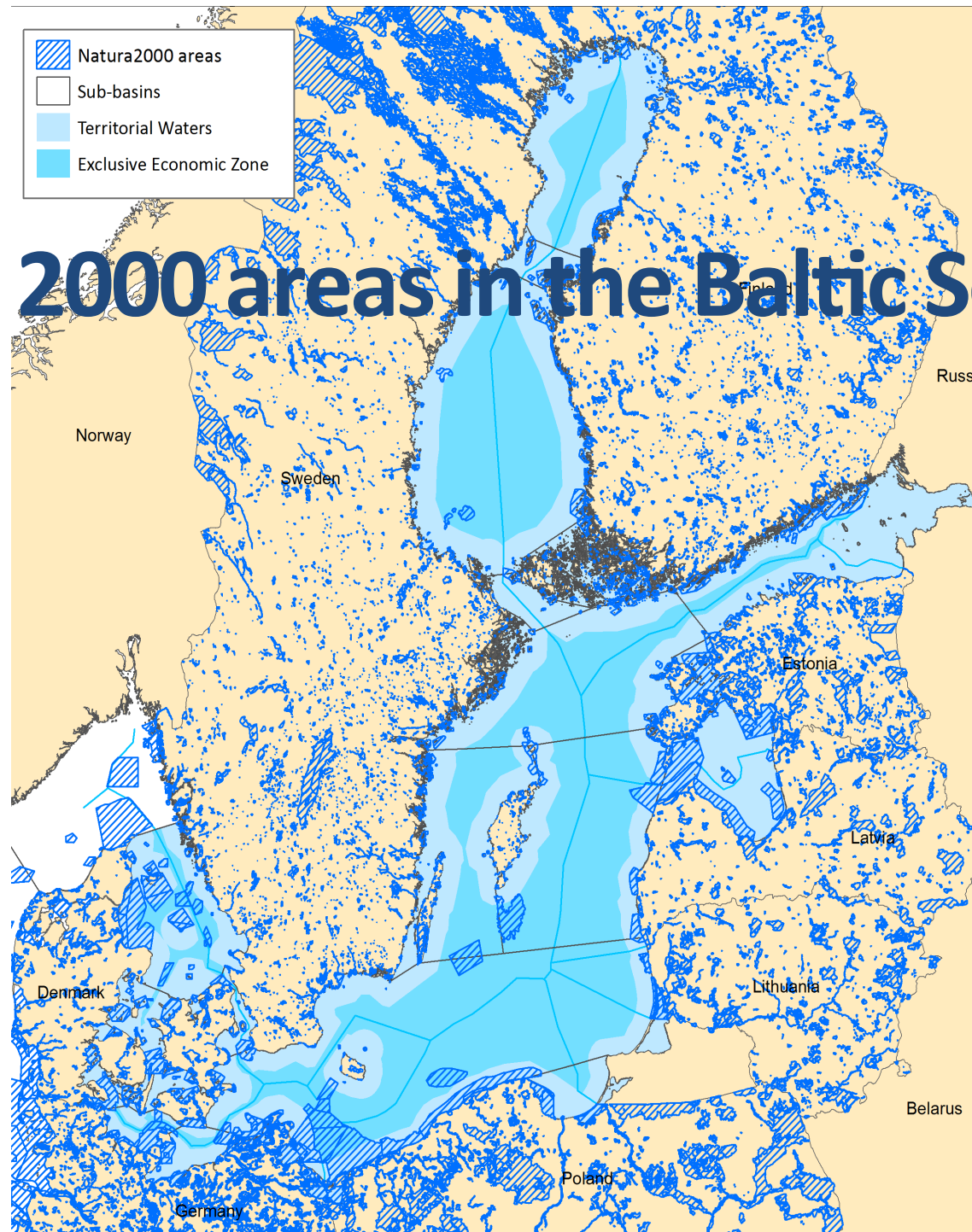
- a management plan in force in 5 years after establishment
- a management plan in force for all old areas by 2015.

## Contents of management plans

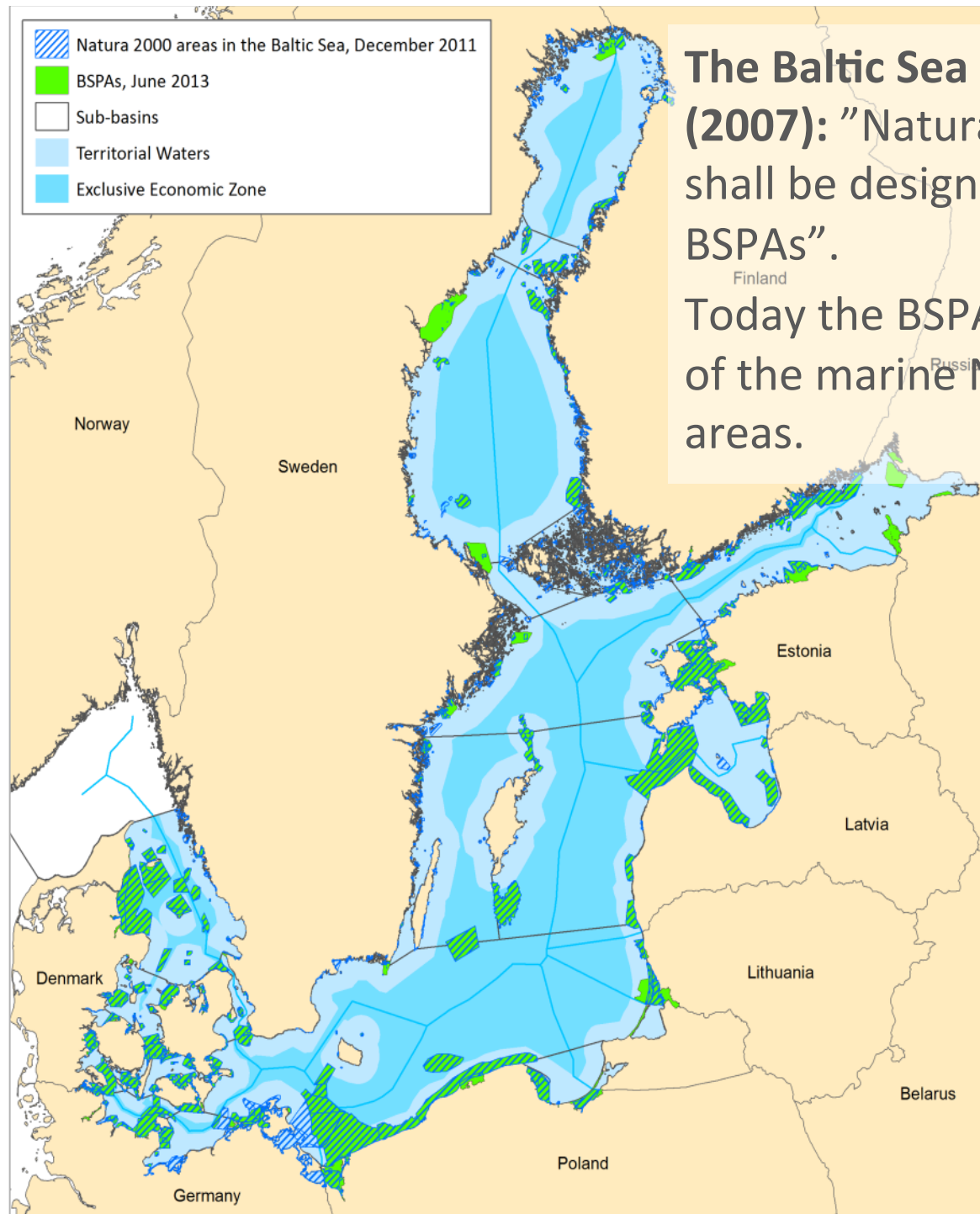




# Natura 2000 areas in the Baltic Sea



In 2010 the  
Natura 2000  
network covered  
44 203 km<sup>2</sup> of  
the Baltic Sea.



**The Baltic Sea Action Plan (2007):** "Natura 2000 areas shall be designated as BSPAs".

Today the BSPAs cover 64% of the marine Natura 2000 areas.


	Baltic Sea Protected Areas	Natura 2000 areas
AIM	To protect valuable marine and coastal habitats and species, targeting those specific for the Baltic Sea.	To achieve or maintain favourable conservation status for European biodiversity features in both terrestrial and marine habitats.
HABITAT	Restricted to the coastal zone and marine area ('preferably purely marine areas').	Covers both inland and marine areas.
LOCATION	Covers the whole Baltic Sea.	Does not cover the Russian areas of the Baltic Sea.
SIZE	Smallest recommended size 30 km <sup>2</sup> .	Can be smaller than 30 km <sup>2</sup> .
LEGALITY	Does not automatically provide legal protection to the site.	Provides legal protection to the sites.
IN PRACTICE	A BSPA may protect a wider range of marine species, habitats, biotopes and natural processes than an overlapping Natura 2000 site.	Natura 2000 areas may cover marine areas, but they are in most cases included in the protection mainly as e.g. feeding grounds for marine birds.
	<i>Most of the Natura 2000 sites in the Baltic Sea area have also been designated as BSPAs. Some smaller sites have been merged together under one large BSPA.</i>	

# Achievements of the

- The CBD target has been reached.
- Size of the network has increased.
- Coverage in the Baltic Sea has increased.
- Coverage in the Baltic Sea has increased.
- Many possibilities for expansion not restricted by management.



**Overview of the status  
of the network of Baltic Sea  
marine protected areas**



**HELCOM**  
Baltic Marine Environment Protection Commission



NHS/ Julia Nyström

*Thank you!*

Janica Borg  
janica.borg@helcom.fi  
www.helcom.fi

HELCOM





# *Extra information*

Country and number of BSPAs		Total area of BSPAs	Marine fraction of BSPAs		Total marine area per country			Protected marine area as area (km <sup>2</sup> ) and fraction (%) of the national territorial waters (TW), exclusive economic zone (EEZ) and total area					
		km <sup>2</sup>	km <sup>2</sup>	(%)	TW km <sup>2</sup>	EEZ km <sup>2</sup>	Total km <sup>2</sup>	TW km <sup>2</sup>	(%)	EEZ km <sup>2</sup>	(%)	Total km <sup>2</sup>	(%)
Denmark	66	11 181	10 411	(93%)	32 280	13 098	45 378	9 328	(29%)	1 083	(8%)	10 411	(23%)
Estonia	7	7 192	6 050	(84%)	24 728	11 593	36 320	5 969	(24%)	81	(1%)	6 050	(17%)
Finland	22	5 798	5 324	(92%)	51 809	28 962	80 771	5 324	(10%)	0	(0%)	5 324	(7%)
Germany	12	5 840	5 526	(95%)	10 806	4 529	15 335	3 056	(28%)	2 470	(55%)	5 526	(36%)
Latvia	7	4 364	4 364	(100%)	12 625	16 126	28 751	4 198	(33%)	166	(1%)	4 364	(15%)
Lithuania	6	1 393	1 005	(72%)	2 274	4 238	6 512	1 005	(44%)	0	(0%)	1 005	(15%)
Poland	9	8 052	7 361	(91%)	10 076	19 494	29 570	5 711	(57%)	1 650	(8%)	7 361	(25%)
Russia	6	1 435	977	(68%)	16 533	7 369	23 902	977	(6%)	0	(0%)	977	(4%)
Sweden	28	8 387	7 375	(88%)	76 055	71 352	147 407	4 626	(6%)	2 749	(4%)	7 375	(5%)
Total	163	53 642	48 392	(90%)	237 186	176 761	413 946	40 200	(17%)	8 200	(4.6%)	48 392	(11.7%)

# Protected area per sub-basin

Baltic Sea sub-basin	BSPAs marine area June 2009			BSPAs marine area June 2013	
	km <sup>2</sup>	(%)		km <sup>2</sup>	(%)
Baltic Proper	8 554	(4.1%)		18 055	(8.7%)
Belt Sea	2 929	(15.8%)		6 198	(33.5%)
Gulf of Bothnia	5 086	(4.4%)		5 537	(4.8%)
Gulf of Finland	2 627	(8.9%)		3 634	(12.3%)
Gulf of Riga	2 604	(13.9%)		7 718	(41.1%)
Kattegat	1 845	(7.9%)		5 502	(23.7%)
The Sound	319	(14.0%)		480	(21.0%)
Baltic Sea, total	23 967	(5.8%)		47 124	(11.7%)

# IUCN categories of the BSPAs

	IUCN category	Number of BSPAs reported		Mean coverage per BSPA	
Ia	Strict nature reserve	15		6%	
Ib	Wilderness area	15		17%	
II	National park	14		23%	
III	Natural monument or feature	5		4%	
IV	Habitat/species management area	88		2%	
V	Protected landscape or seascape	28		13%	
VI	Protected areas with sustainable use of natural resources	10		63%	

- The Baltic Sea Action Plan (2007):  
Natura 2000 areas shall be designated  
as BSPAs.
- Today the BSPAs cover 64% of the  
Natura 2000 areas.
- In 2010 the number was 83%.

Since 2010, the total area of Natura  
2000 sites has increased by 23 864  
km<sup>2</sup>, while the total area of BSPAs  
has increased only by 4 858 km<sup>2</sup>.

That is why the share has sunk even  
though the actual coverage has  
increased.

