



Transnational MSP Data Links: The Lithuanian - Latvian - Russian Trans-boundary Experience

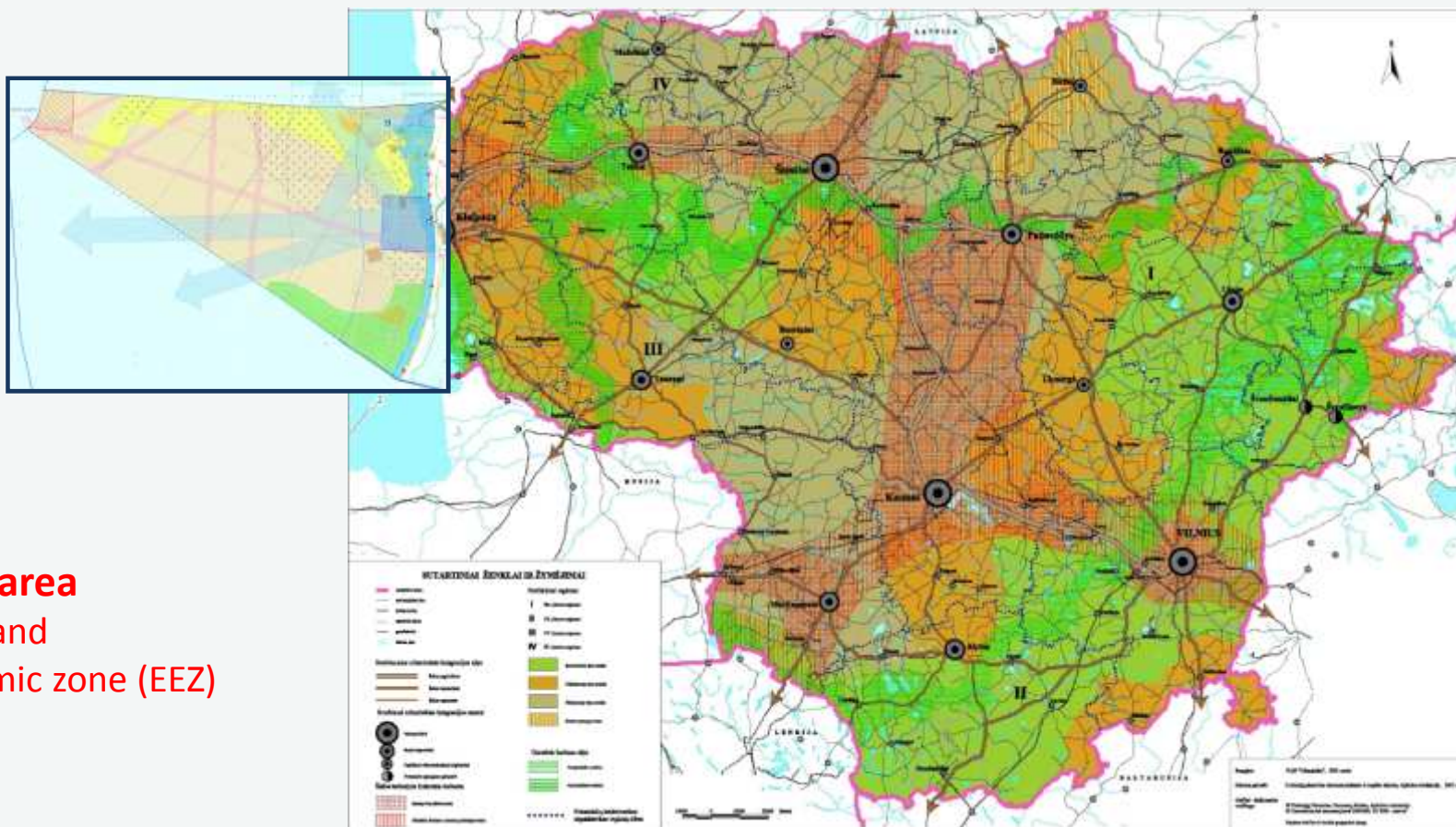
N.Blažauskas, CORPI
Hamburg, 2013 October 15th



Part-financed by the European Union
(European Regional Development Fund)

AIM:

To foster the development of the maritime space of Republic of Lithuania



+ ~10% of the area
Territorial (TW) and
exclusive economic zone (EEZ)

OBJECTIVE:

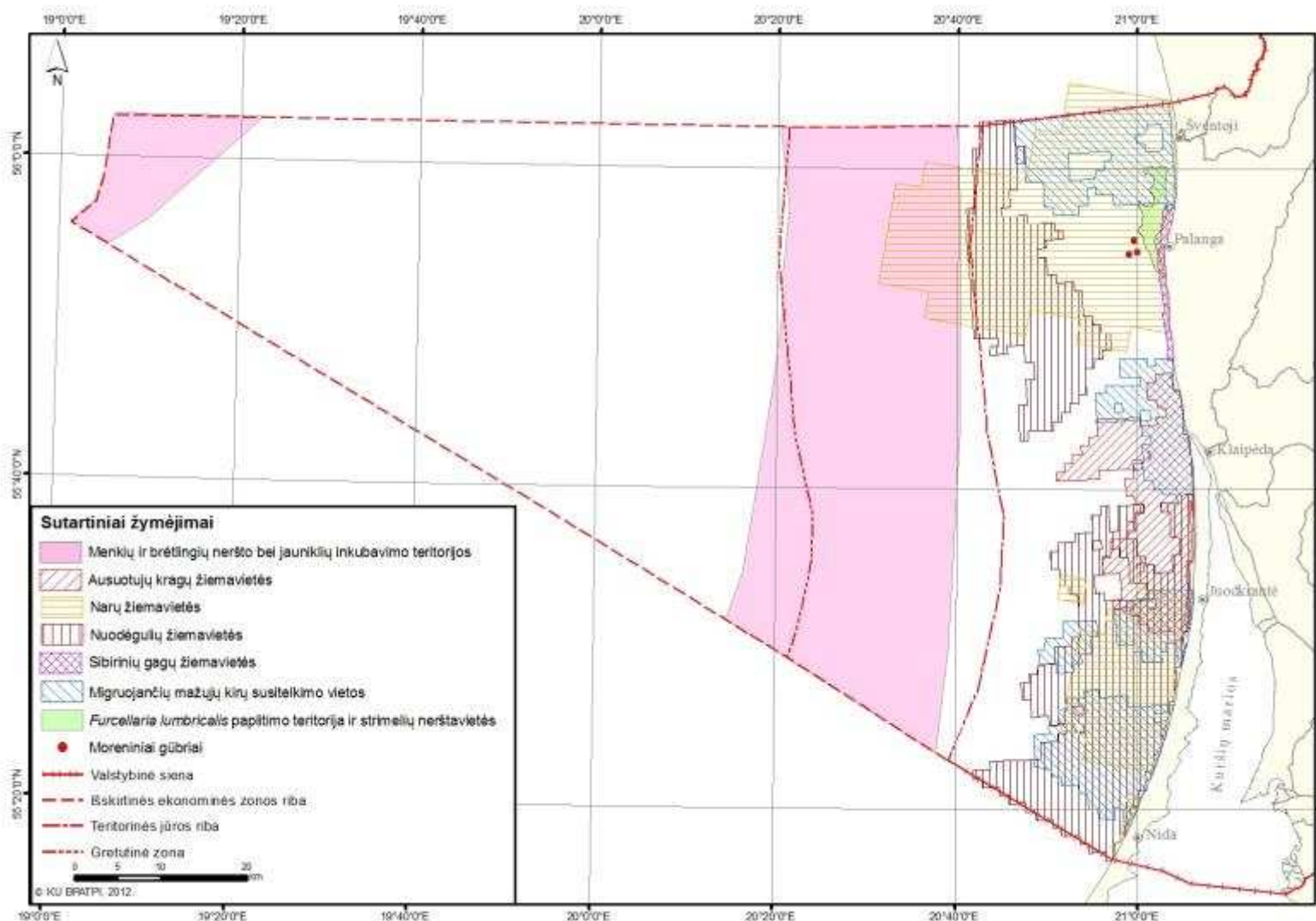
To extend the existing General Plan of Lithuania with marine solutions

STOCKTAKING PRINCIPLES

Seabirds

Natural value
identification

Biological



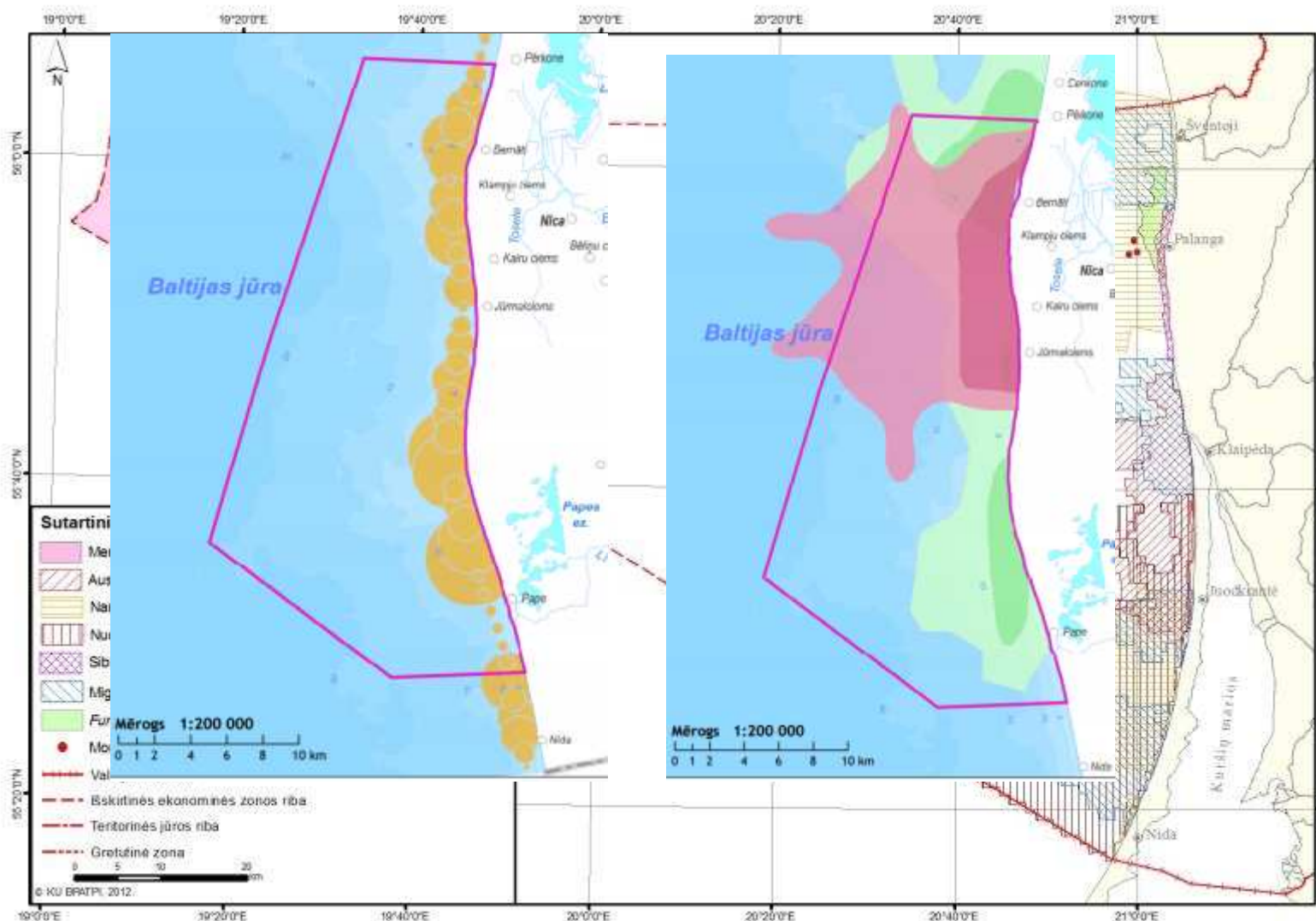
Fish larvae/eggs and zoobenthos

STOCKTAKING PRINCIPLES

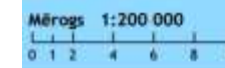
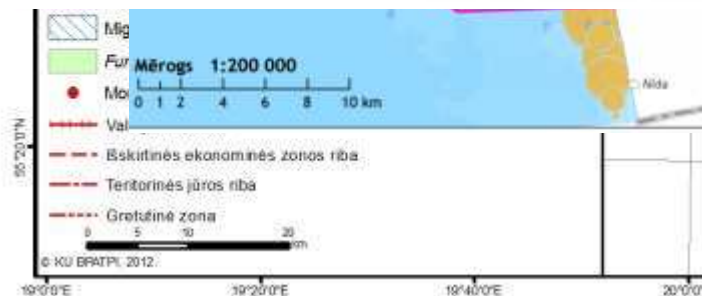
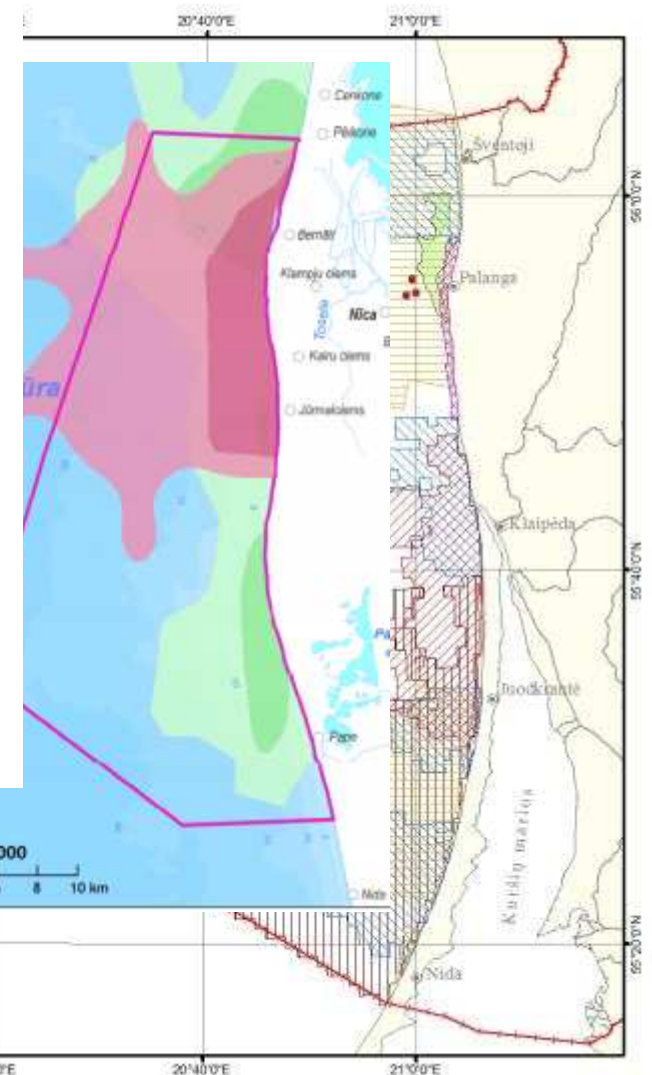
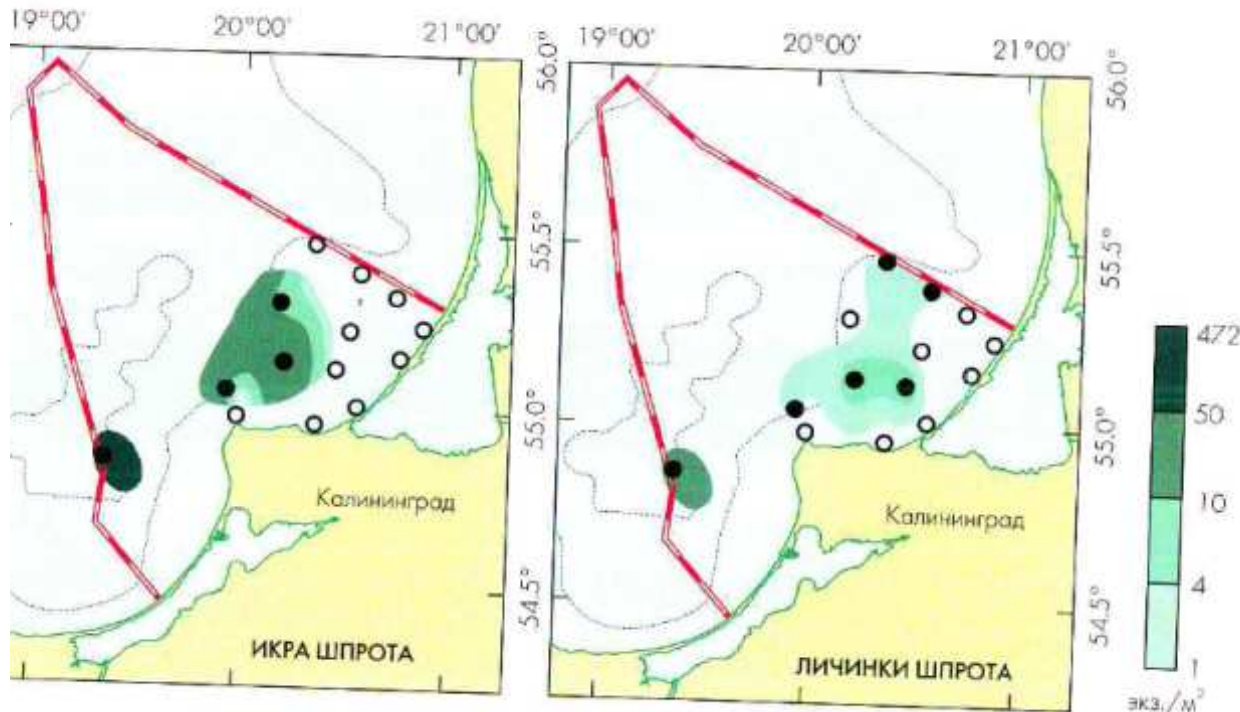
Seabirds

Natural value
identification

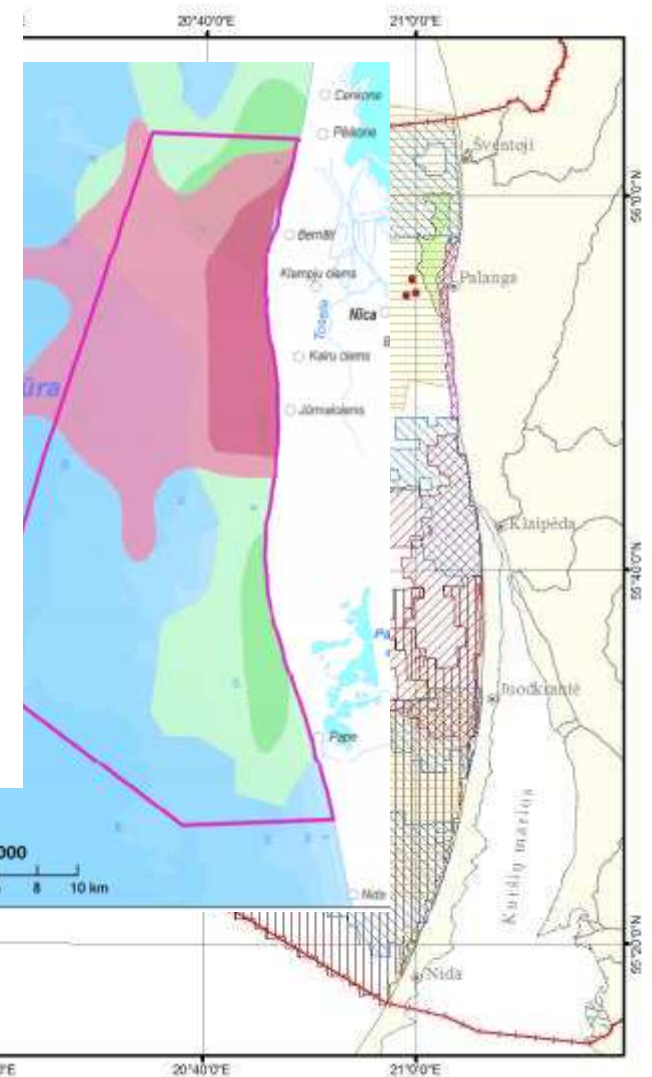
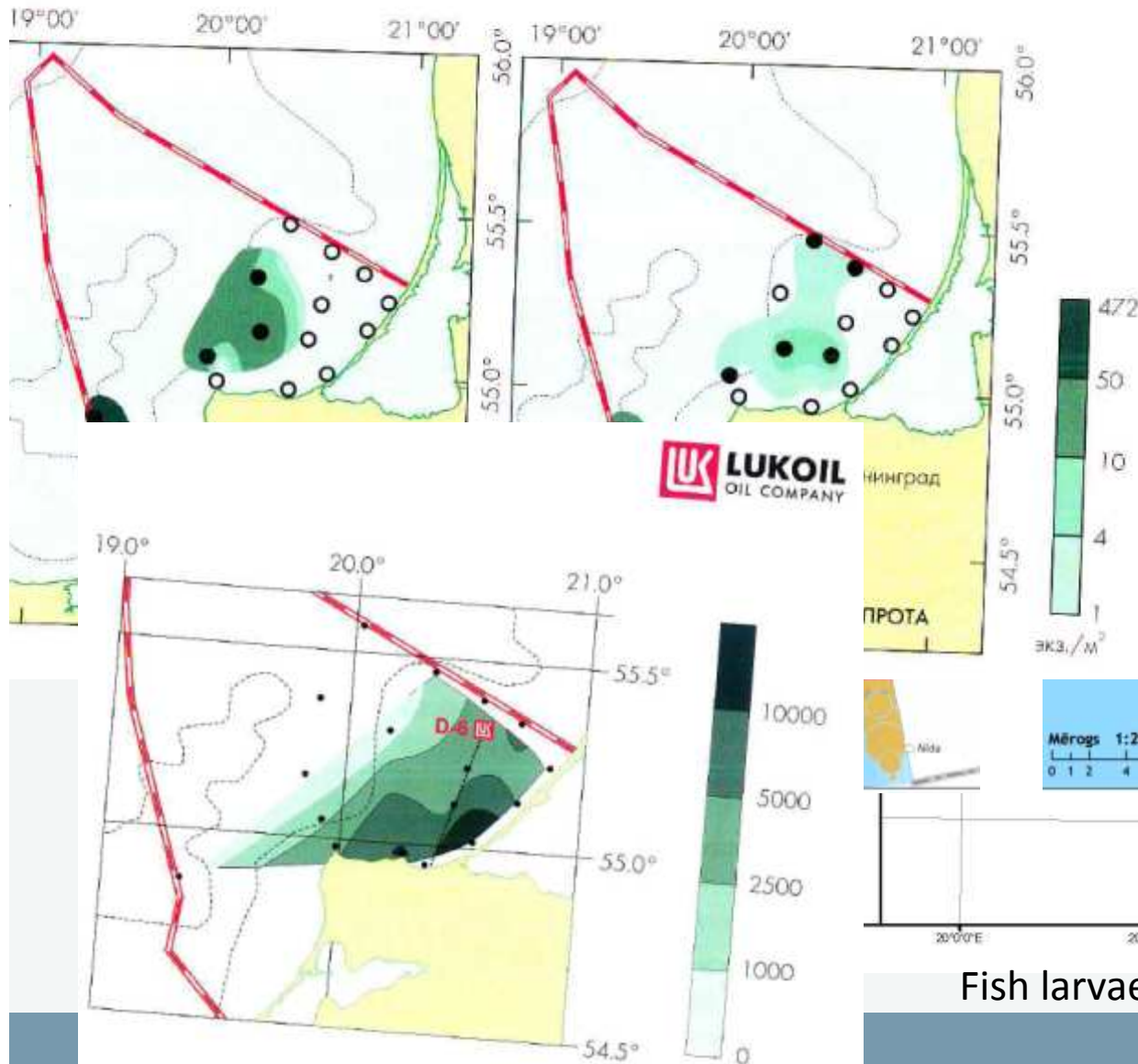
Biological



Fish larvae/eggs and zoobenthos

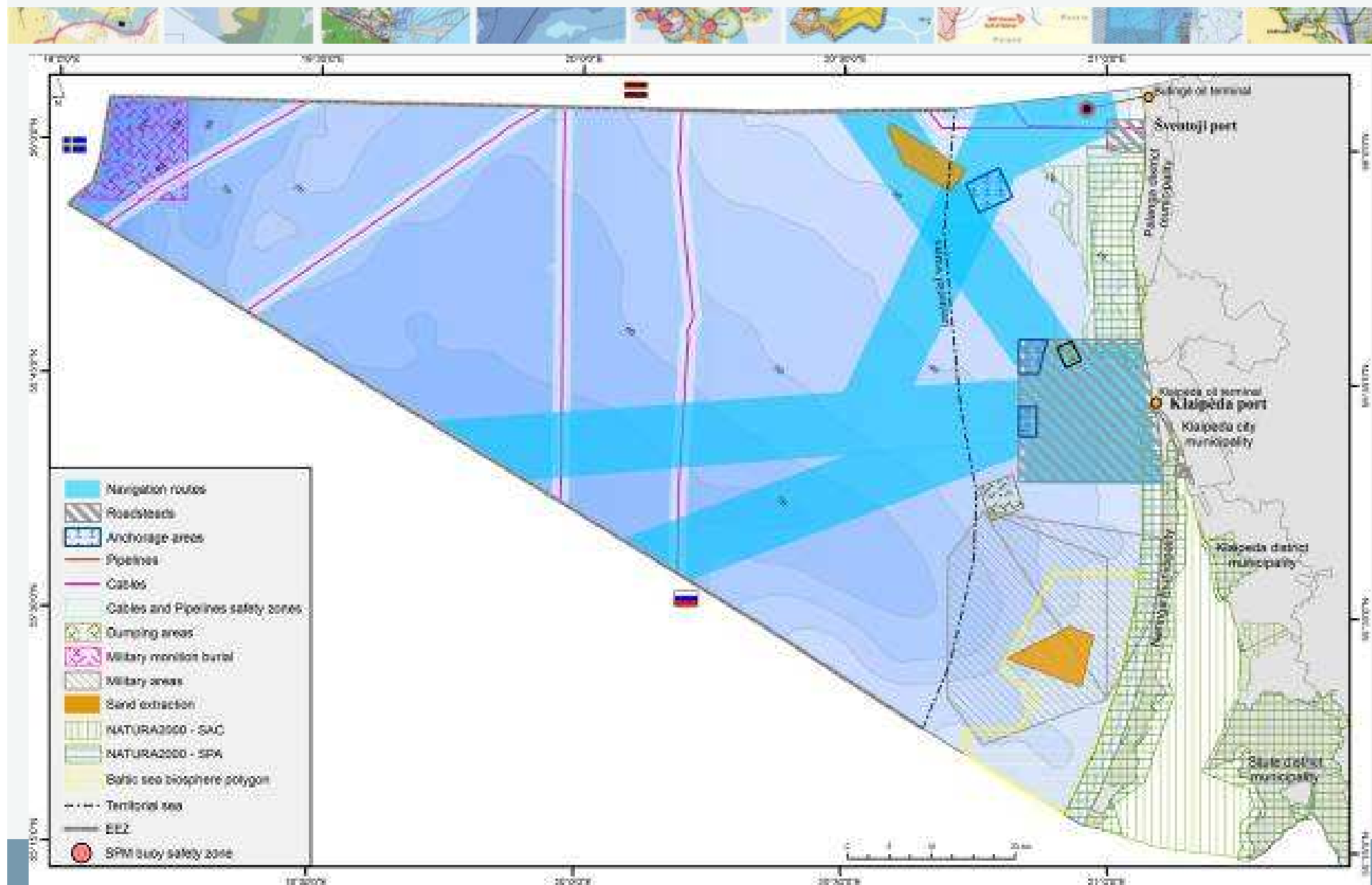


Fish larvae/eggs and zoobenthos

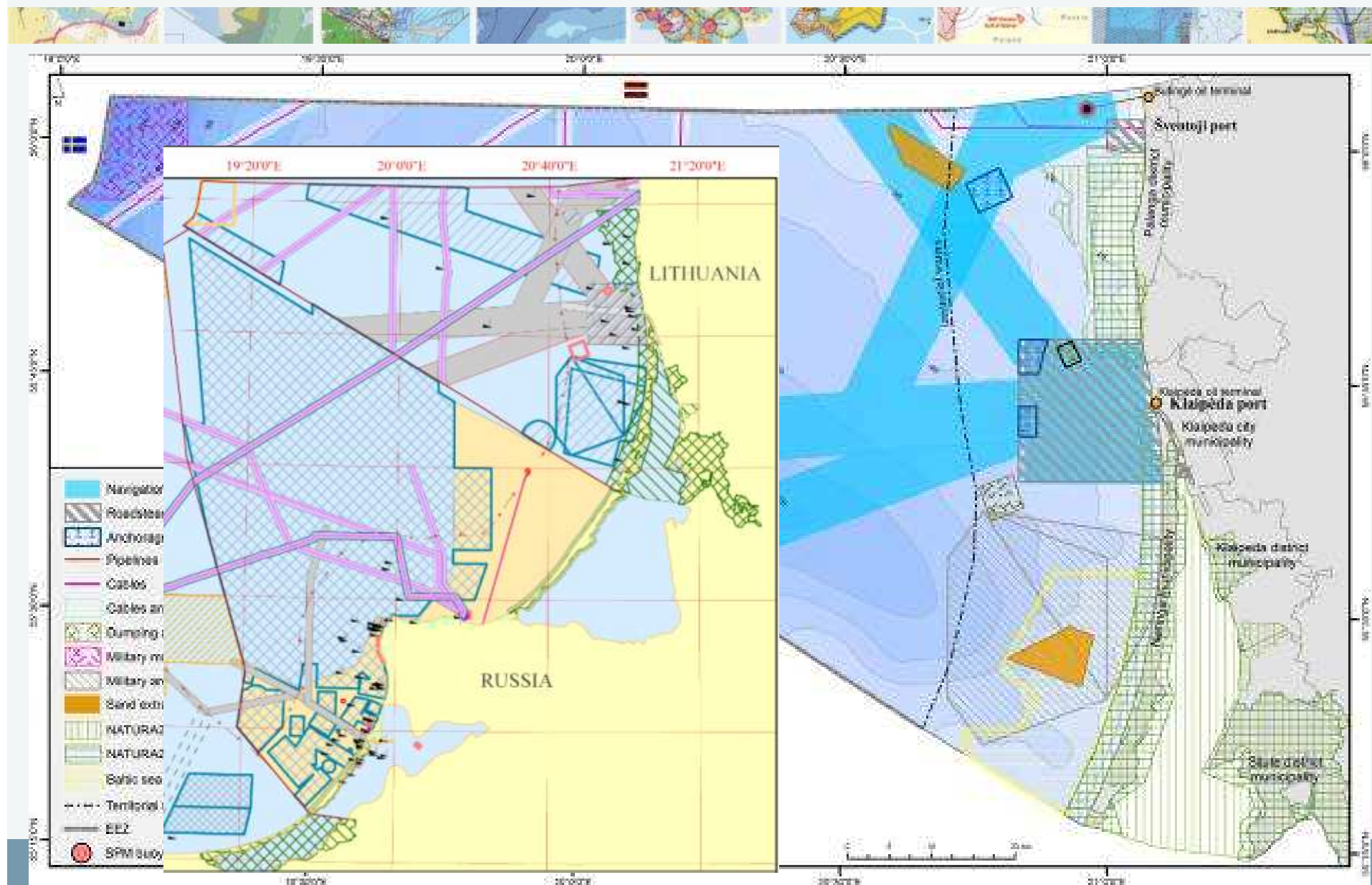


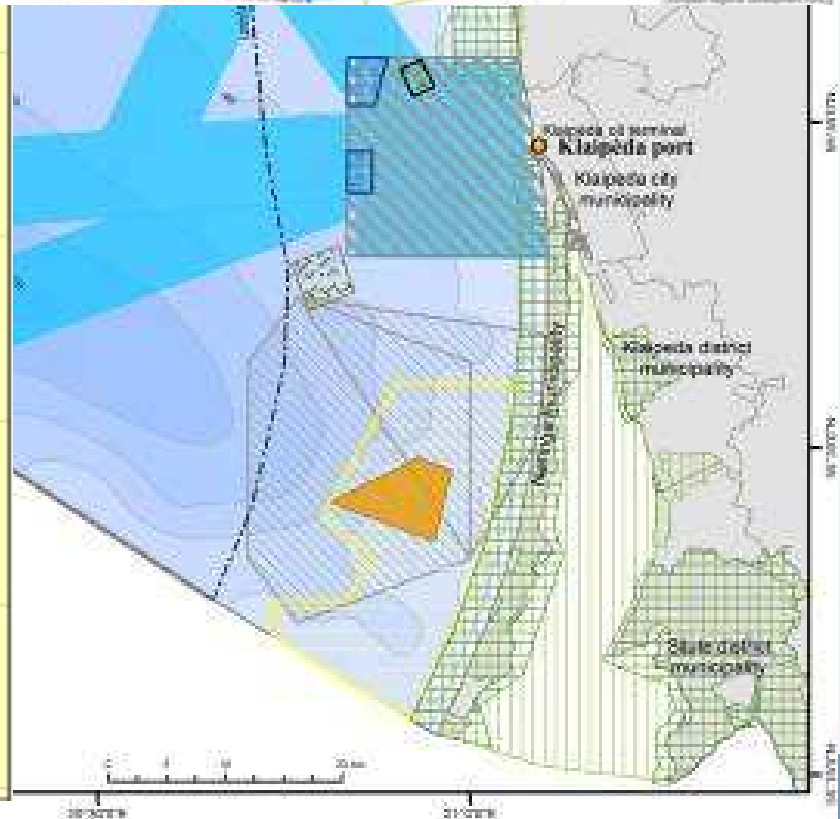
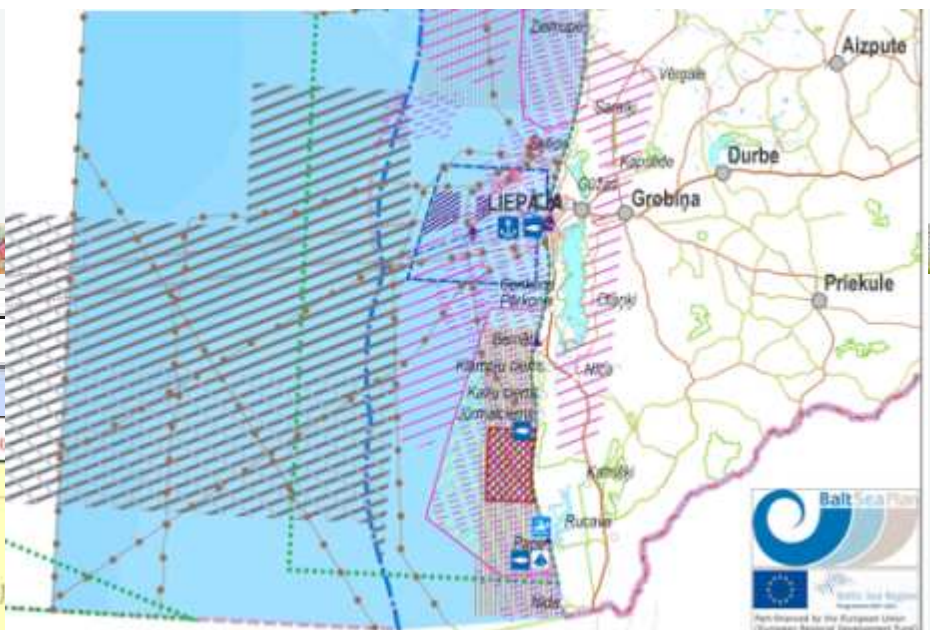
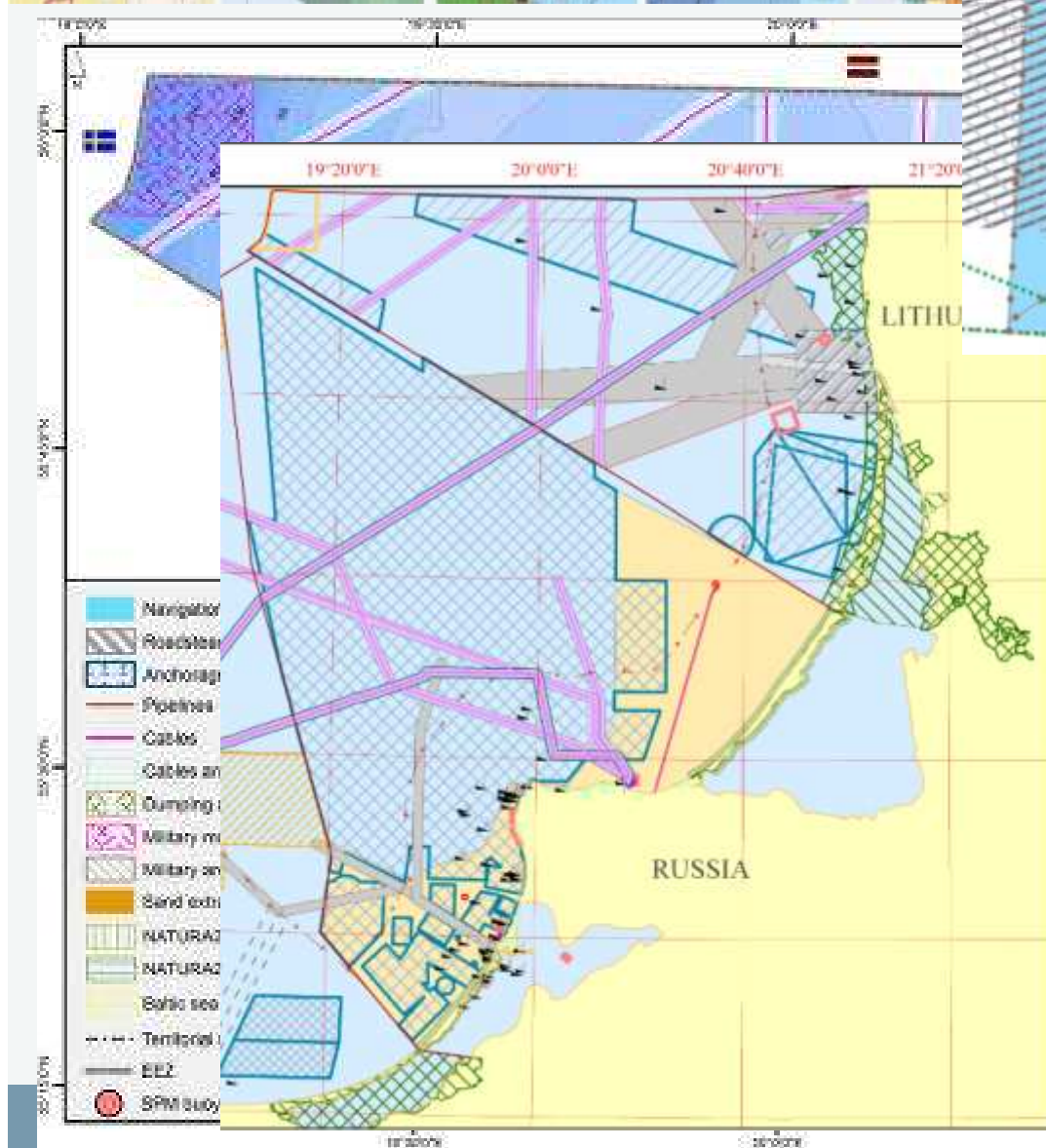
Fish larvae/eggs and zoobenthos

CURRENT USE



CURRENT USE



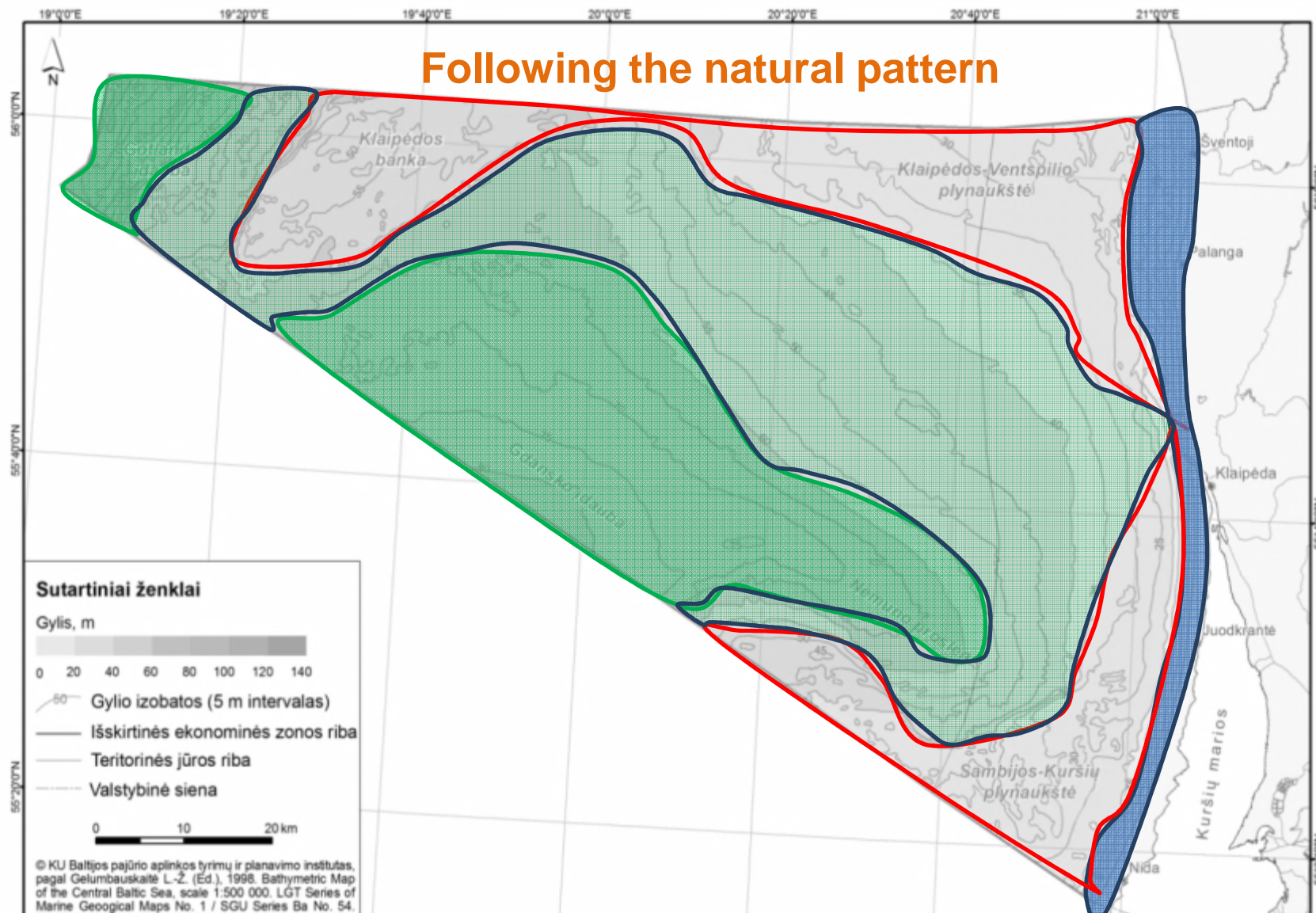


DRIVING FORCES

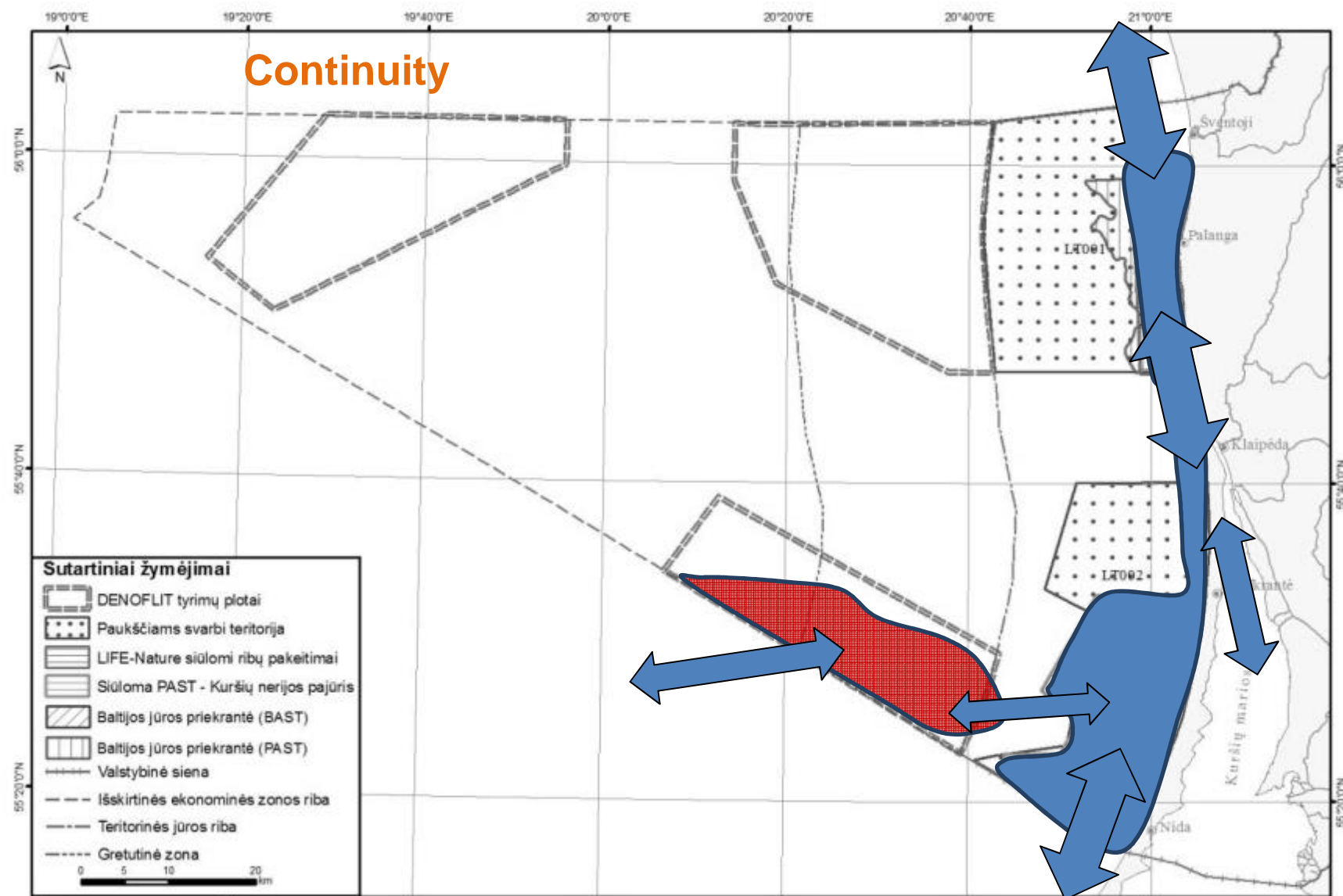


Offshore wind
Energy transfer infrastructure
Mineral resources
Port development
Nature/cultural heritage protection
Fishery and recreation
New/emerging uses

PLANNING PRINCIPLES

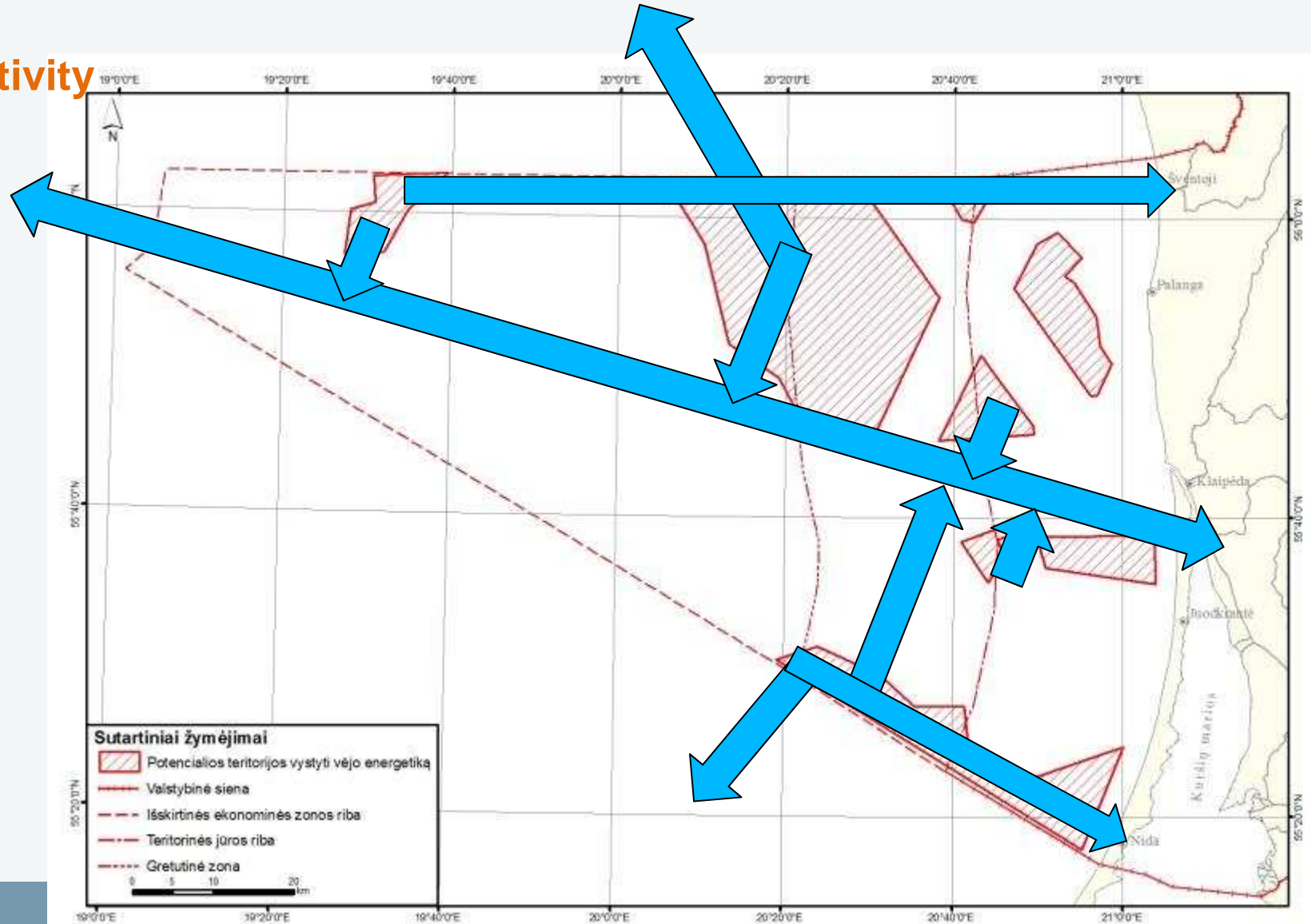


PLANNING PRINCIPLES



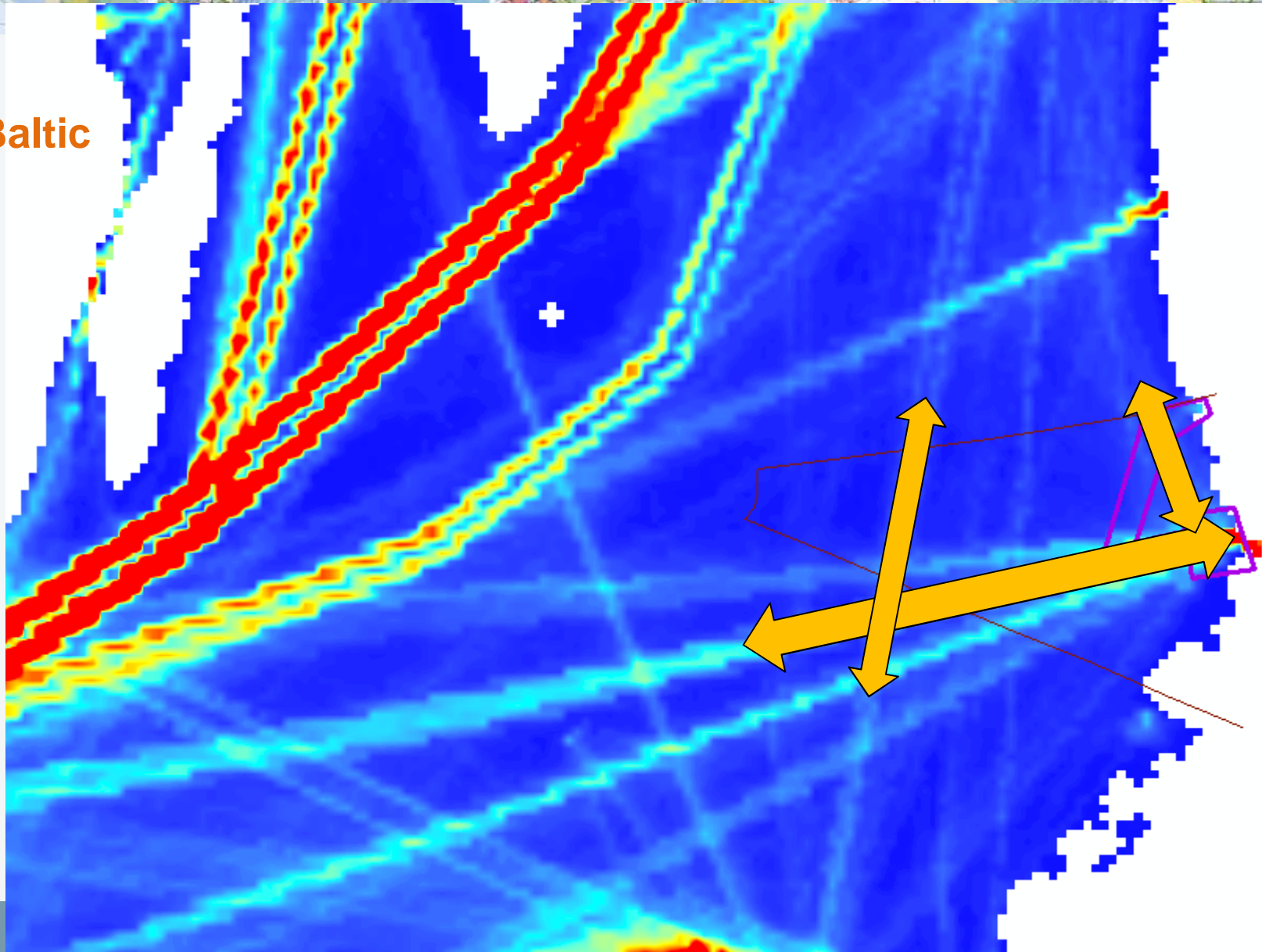
PLANNING PRINCIPLES

Connectivity



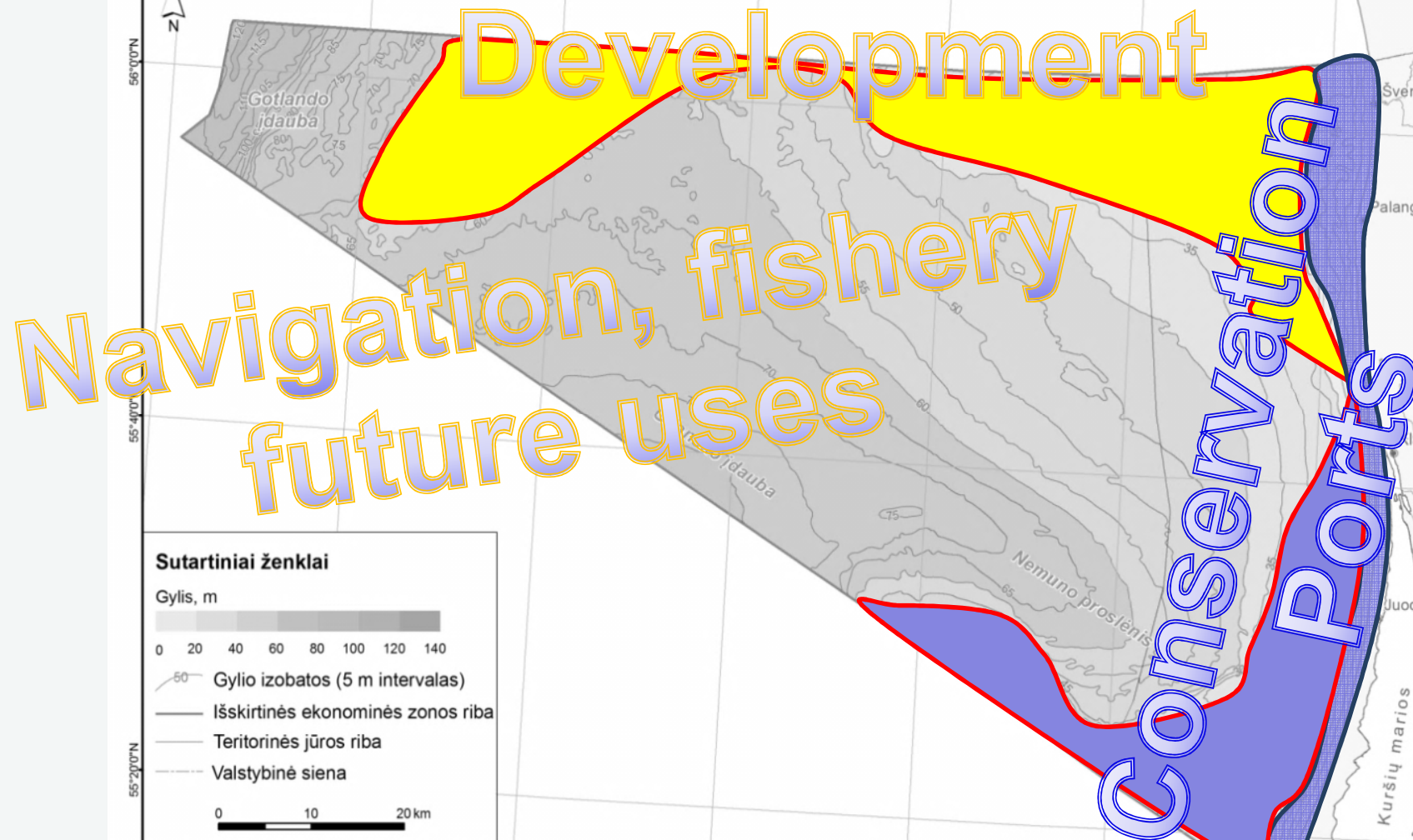
PLANNING PRINCIPLES

TransBaltic

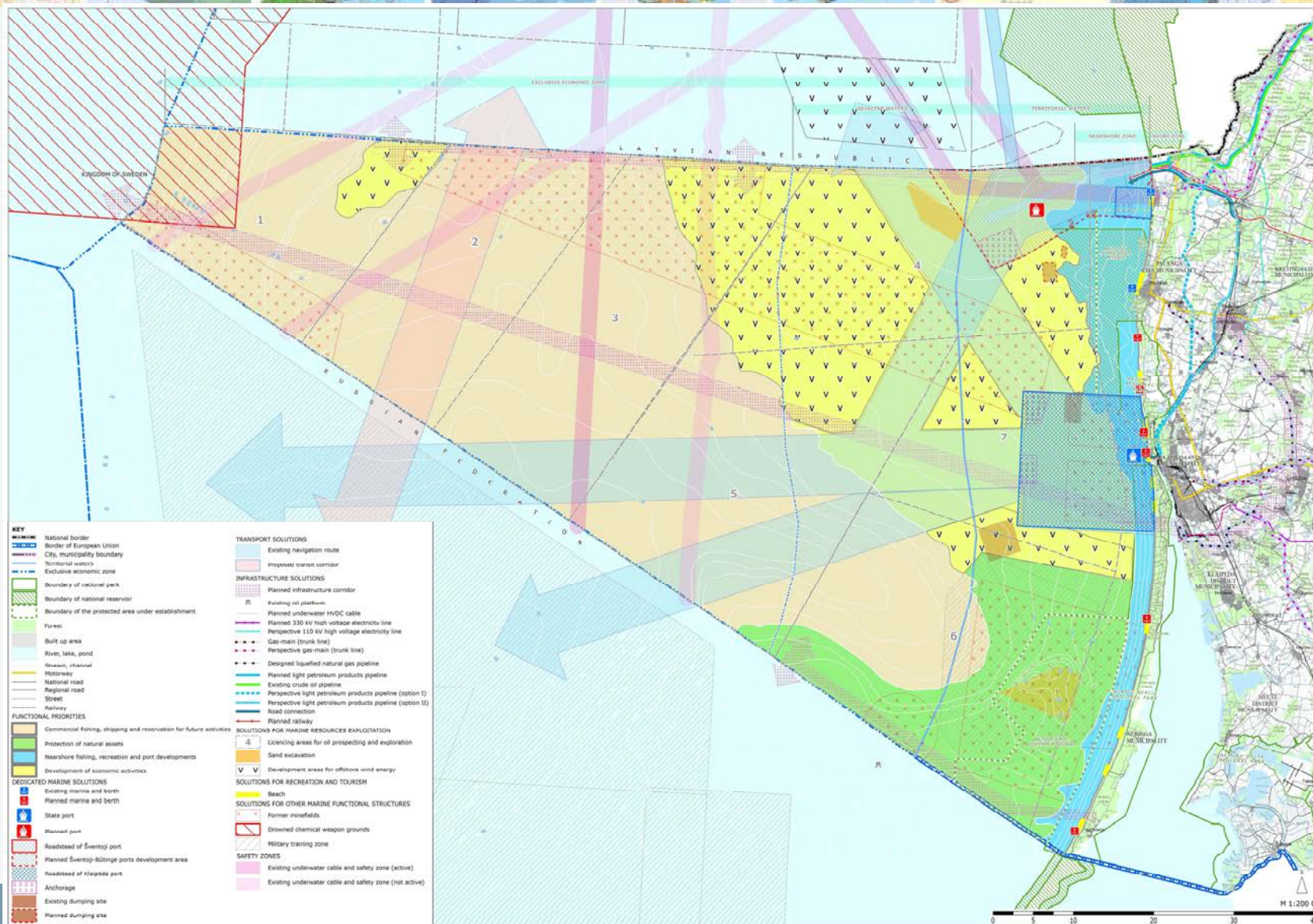


PLANNING PRINCIPLES

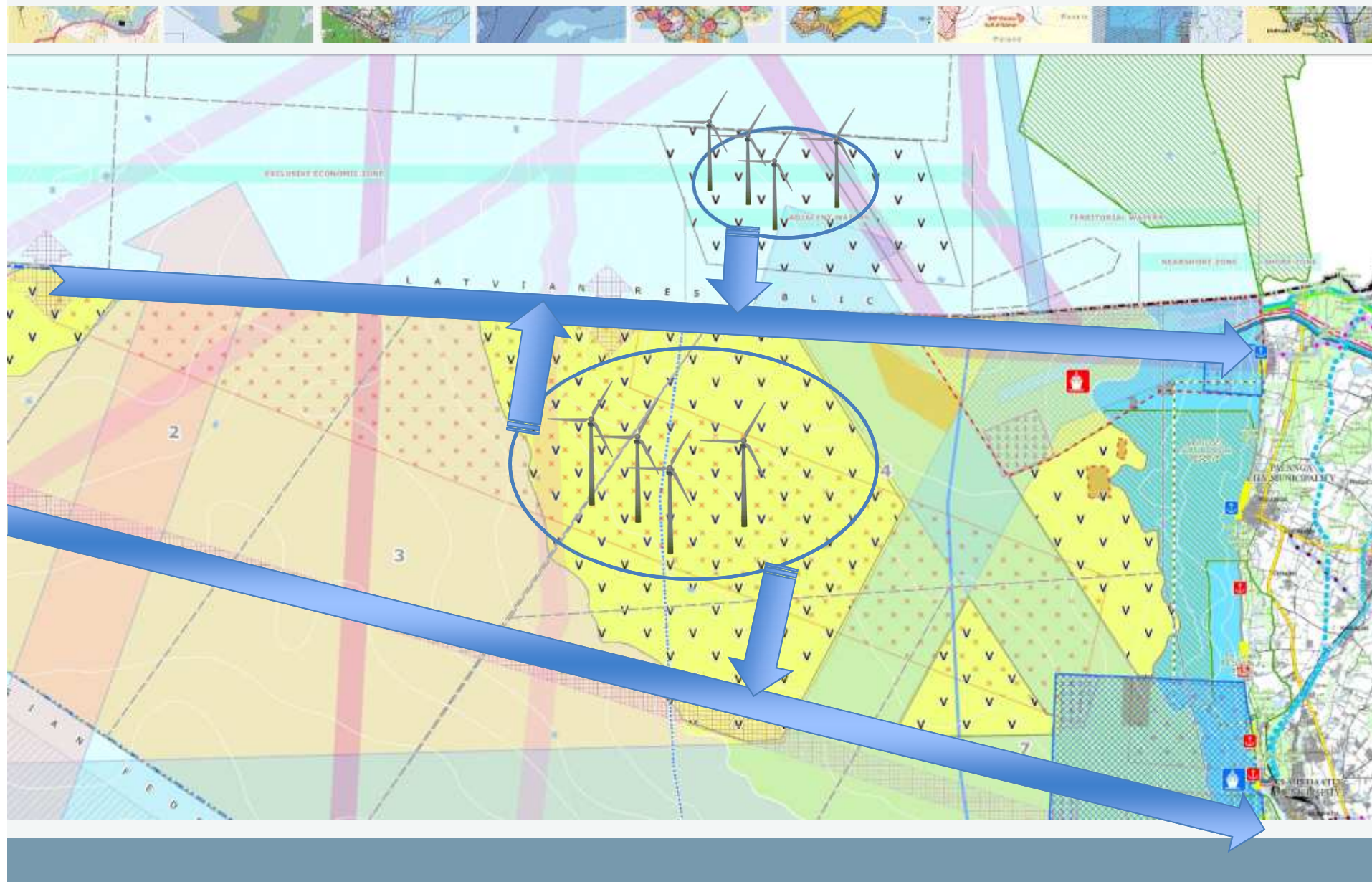
Optimizing the used sea space



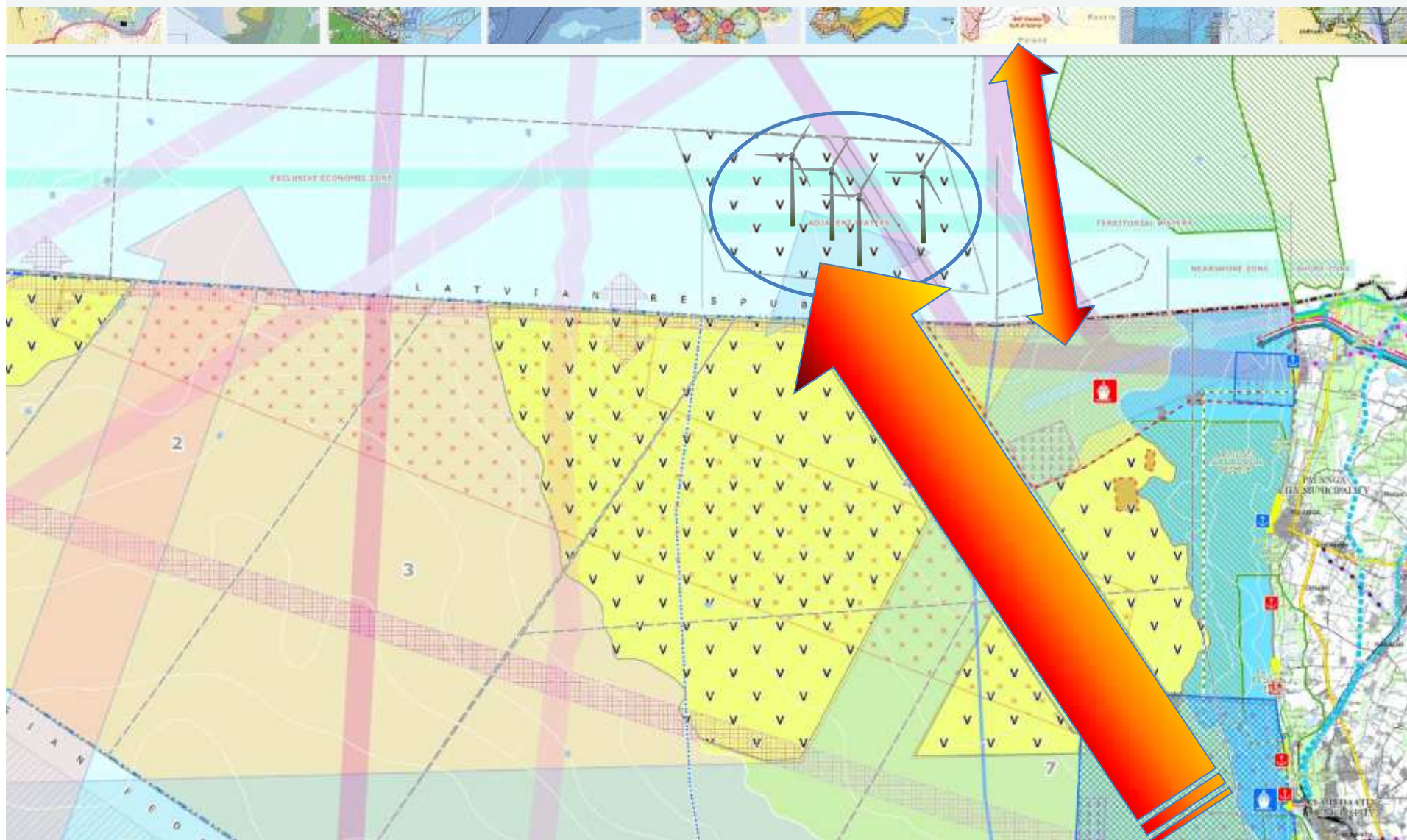
CONCEPT SOLUTIONS



OPPORTUNITIES



CONFLICTS





Thank you,
N.Blažauskas, CORPI
nb@corpi.ku.lt