

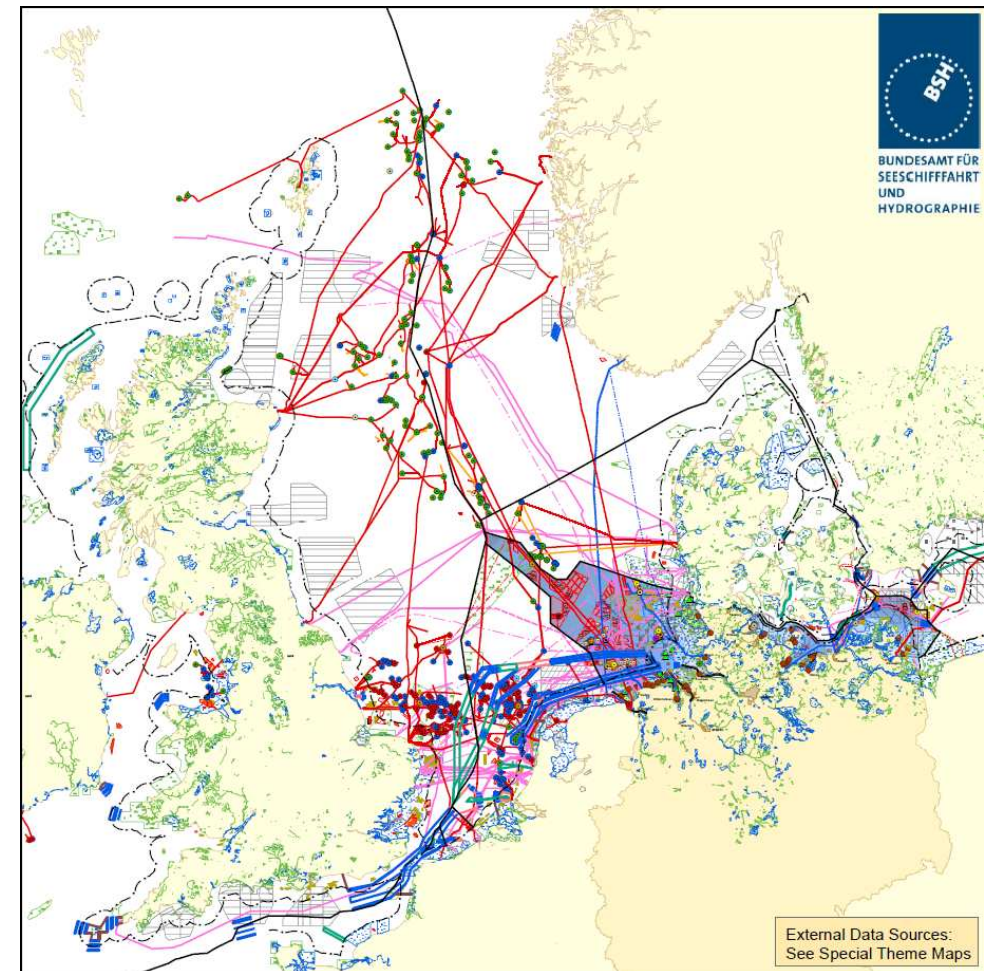
Continental Shelf Information System (CONTIS)



Hamburg, 16.10.2013

CONTIS – Content

- Offshore Windfarms
- Cables
- Pipelines
- Platforms
- Maritime Features (Shipping)
- Sediment Extraction
- Dumping Grounds
- Military practice areas
- Nature conservation

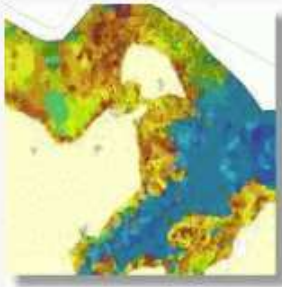


CONTIS via GeoSeaPortal

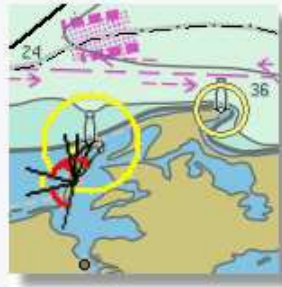
GEO Map-Client starten

GEO Metadatenrecherche

Themeneinstieg



Themeneinstieg Geologie



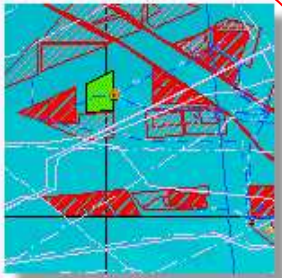
Themeneinstieg Navigation



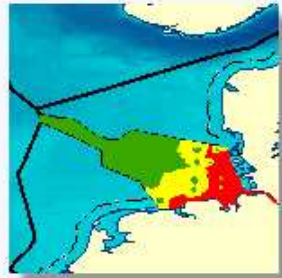
Themeneinstieg Projektstationen



Themeneinstieg Ozeanographie



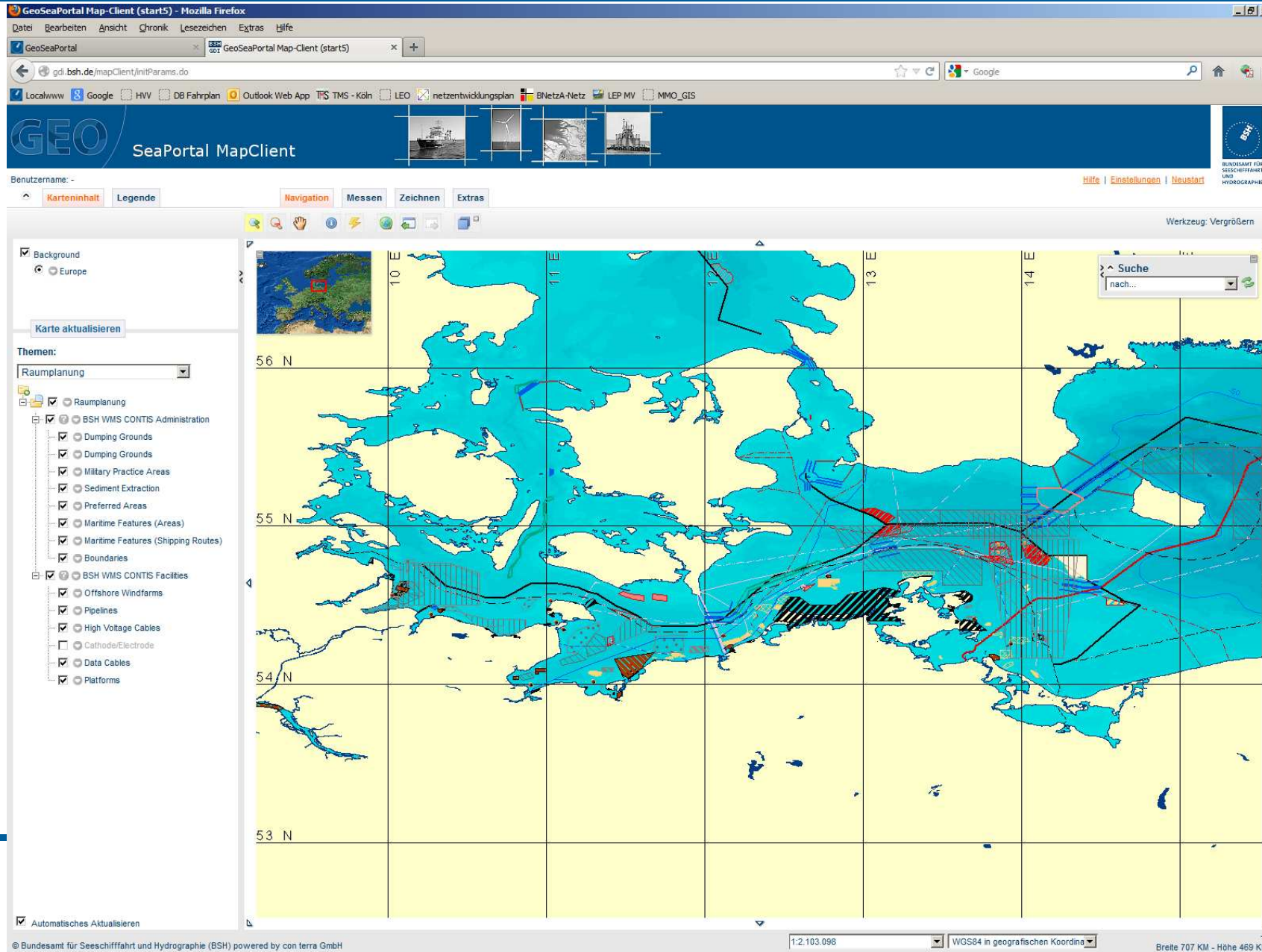
Themeneinstieg Raumplanung



Themeneinstieg Meeresumwelt

www.geoseaportal.de

GeoSeaPortal – Map Client



GeoSeaPortal Map-Client (start5) - Mozilla Firefox

gdi.bsh.de/mapClient/initParams.do

SeaPortal MapClient

Benutzername: -

Karteninhalt | Legende | Navigation | Messen | Zeichnen | Extras

Suche nach...

1.2.103.098 | WGS84 in geografischen Koordina | Breite 707 KM - Höhe 469 KM

© Bundesamt für Seeschifffahrt und Hydrographie (BSH) powered by con terra GmbH

CONTIS Facilities

- Platforms
- Cables (Data Cable and High Voltage Cable)
- Pipelines
- Offshore-Windfarms

WMS

<http://GDISRV.bsh.de/arcgis/services/CONTIS/Facilities/MapServer/WMSServer>

CONTIS Administration

- Boundaries
- Maritime Features (shipping)
- Sediment Extraction
- Military Practice areas
- Dumping grounds
- Preferred areas for offshore wind energy

WMS

<http://GDISRV.bsh.de/arcgis/services/CONTIS/Administration/MapServer/WMS/Server>

Example: Offshore Windfarms

- Name (String, length 50)
- Status (Short Integer)
- Confidence (Short Integer)
- Remark (String, length 250)
- Operating Company (String, length 100)
- In Service Date (Date)
- Projected Operation Period (Short Integer)
- Number of Plants (Long Integer)
- Power Rating (MW) (Long Integer)
- Out of Service Date (Date)
- Application (Short Integer)
- Approval (Date)
- Construction Start (Date)

Example: High Voltage Cable

- Name (String, length 50)
- Status (Short Integer)
- Confidence (Short Integer)
- Remark (String, length 250)
- Operating Company (String, length 100)
- In Service Date (Date)
- Projected Operation Period (Short Integer)
- Power Rating (MW) (Long Integer)
- Max Amperage (A) (Long Integer)
- Max Voltage (kV) (Long Integer)
- Out of Service Date (Date)

Thank you very much!

