



Rijksdienst voor het Cultureel Erfgoed
*Ministerie van Onderwijs, Cultuur en
Wetenschap*

Introduction to UCH and MSP in the Netherlands



Marie-Catherine Houkes
m.houkes@cultureelerfgoed.nl



Rijksdienst voor het Cultureel Erfgoed
*Ministerie van Onderwijs, Cultuur en
Wetenschap*

UCH and MSP in The Netherlands

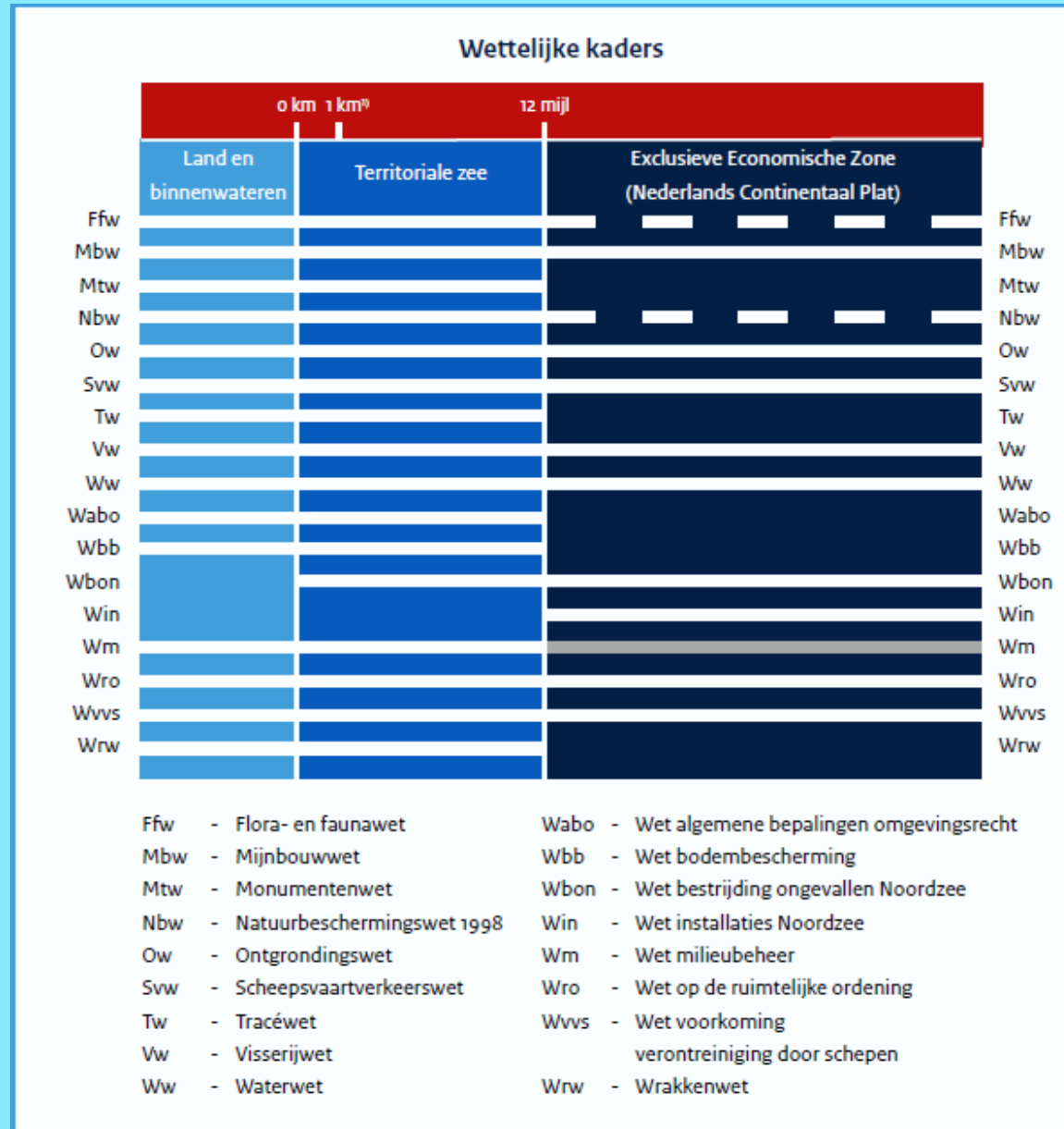
- Introduction
- Legislation at sea (North sea, Wadden sea)
- UCH management problems and solutions
- Synergy
- Data exchange / public acces to information
- Maritime Programme

Current legislation at sea

Monuments Act
 Sand extraction Act
 Environmental Protection Act
 Mining Act – Mining decree

Water Act

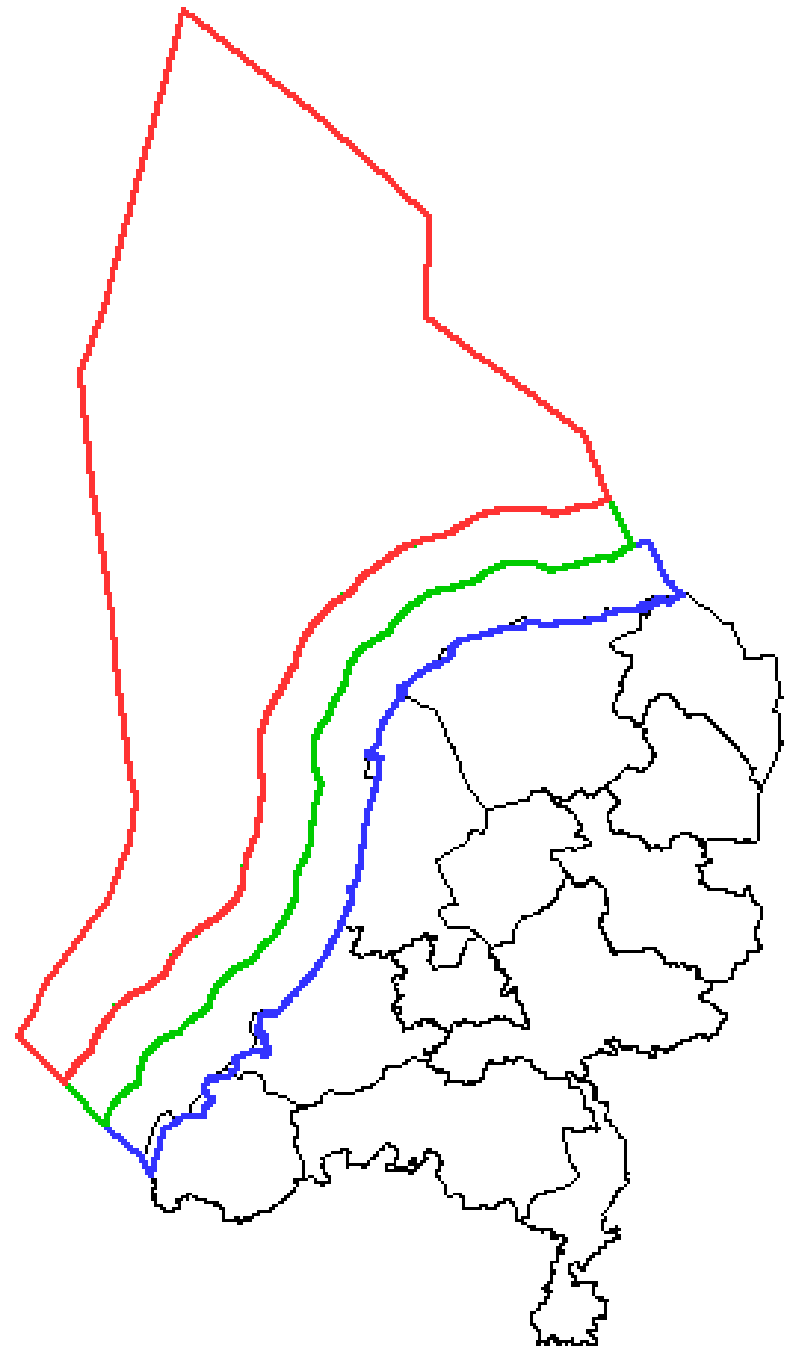
Spatial planning Act
 Environmental licensing act
 Integrated physical
 environment permit



Zoning

Monuments Act 1988: territorial
waters, contiguous zone

Excavation licence
Obligation to report finds



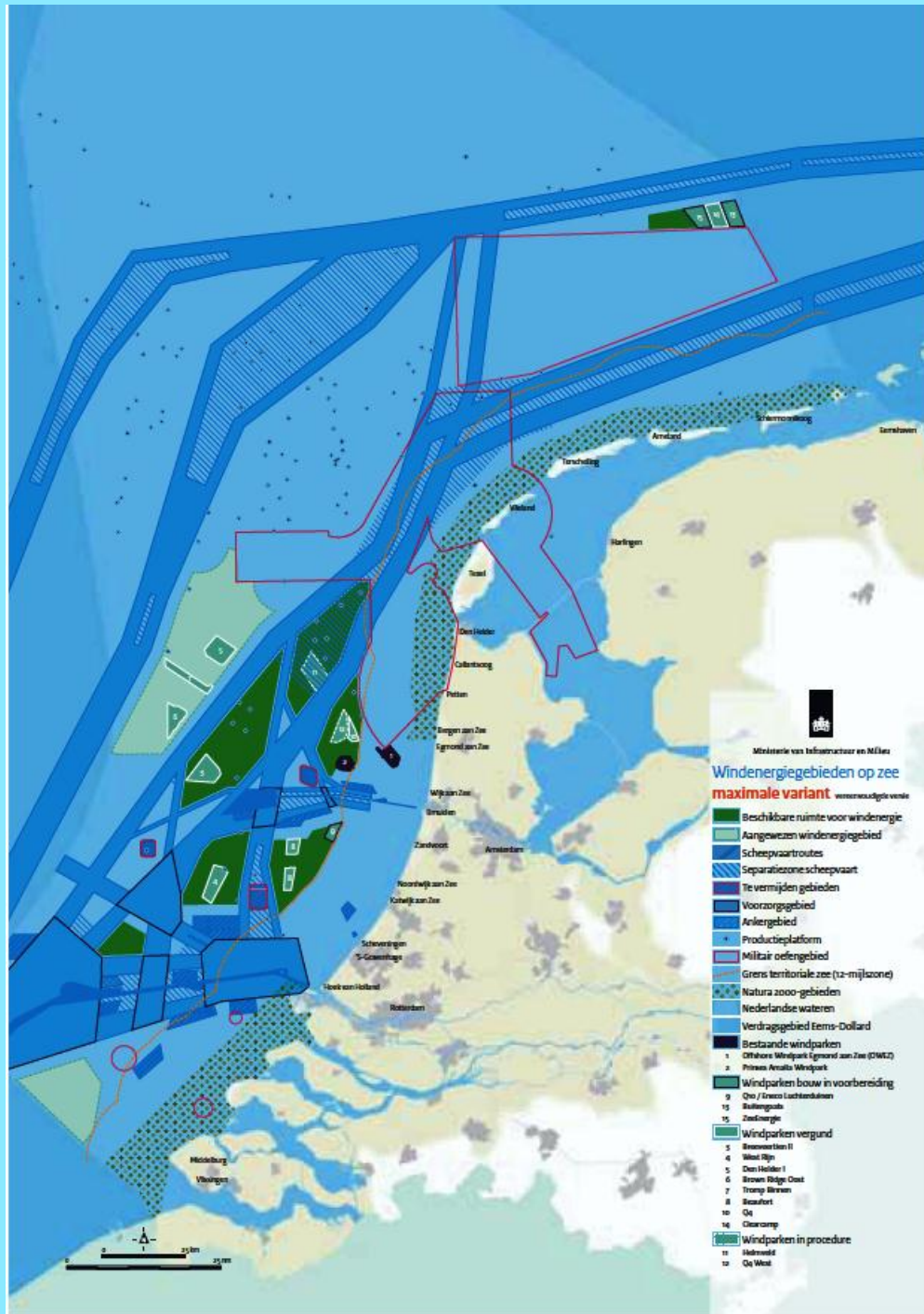
North Sea and internal waters entirely different:

North Sea:
sectoral approach
National waterplan
Structural concepts



Wadden Sea:
integral approach in
development plans

Main UCH management problems and solutions



North Sea:
Sectoral approach. Restricted influence Monuments Act.

Solutions:
Future integral Environmental planning Act (Omgevingswet), covering the North Sea.



Wadden Sea:

Municipalities tend to look at the national government.

Possible solutions: heritage values part of municipal development plans and permits.

Municipal or state monuments.

Control and enforcement in cooperation with states services, coastguard etc.

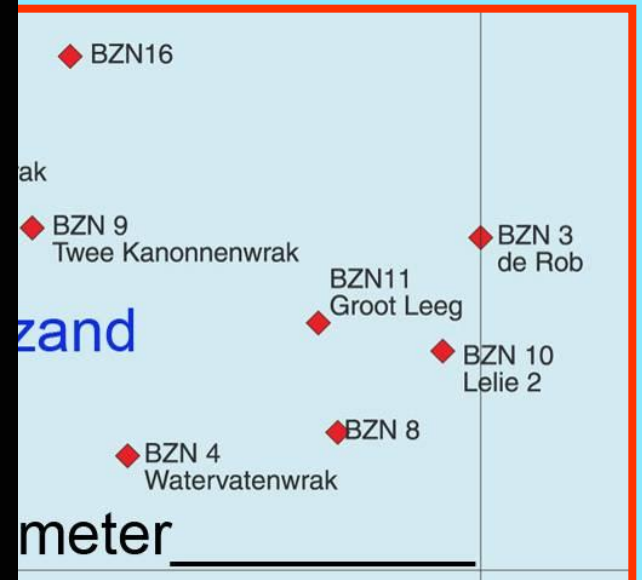
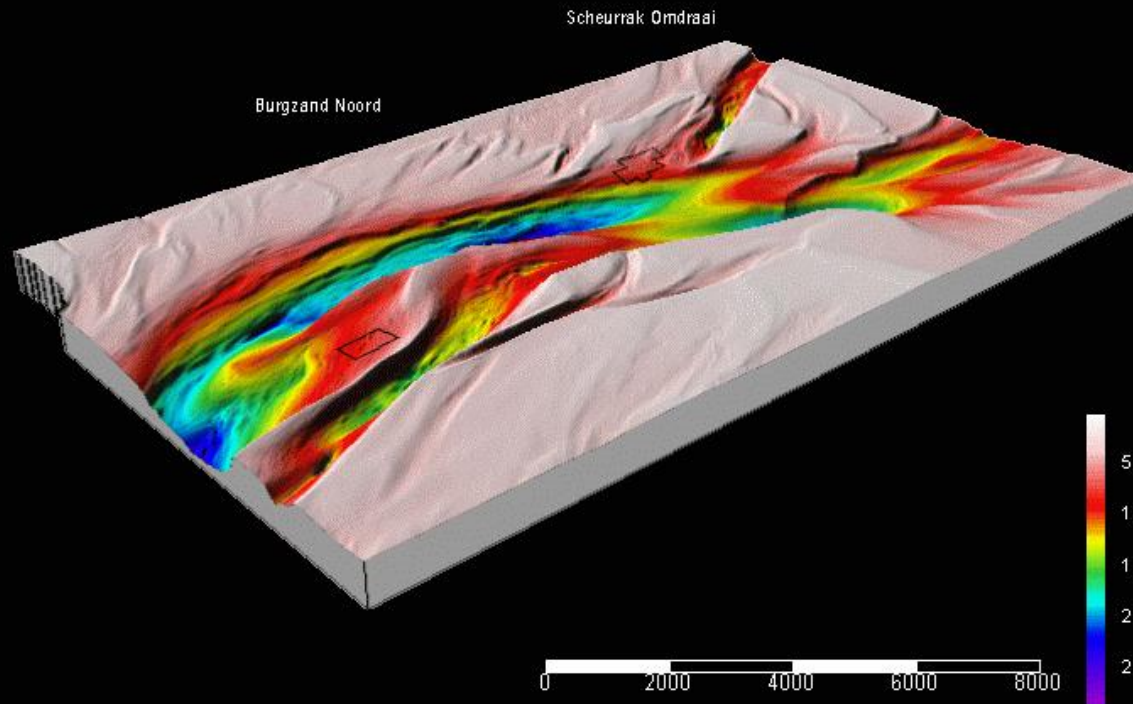
Erosion: no public / private actor, no legal obligation - How to organise protection?

Burgzand Noord



Verandering morfologie 1925 - 2010

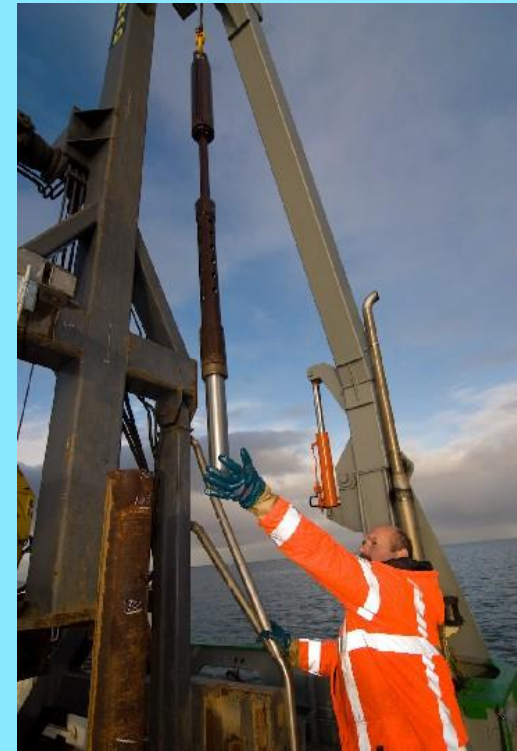
2005



Synergy

Windfarms: wreck locations preserved within the park: protection through ban on ships-passages.

Large infrastructural works with low social acceptance: positive publicity



Data exchange on UCH sites

Tourism

Public access to information

Risks: Treasure hunting – restricted access

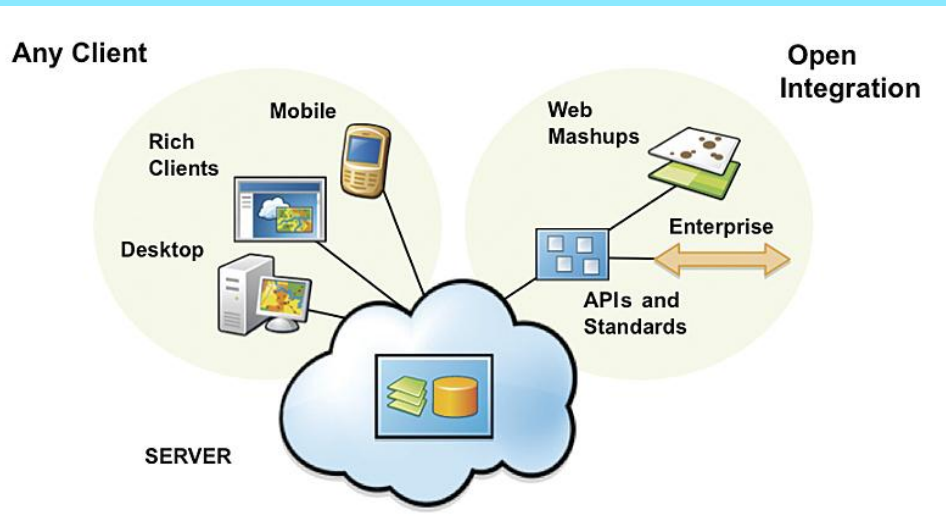
Cooperation with divers (diving – clubs)

Exchange: information on new sites, monitoring.

Courses, lectures.

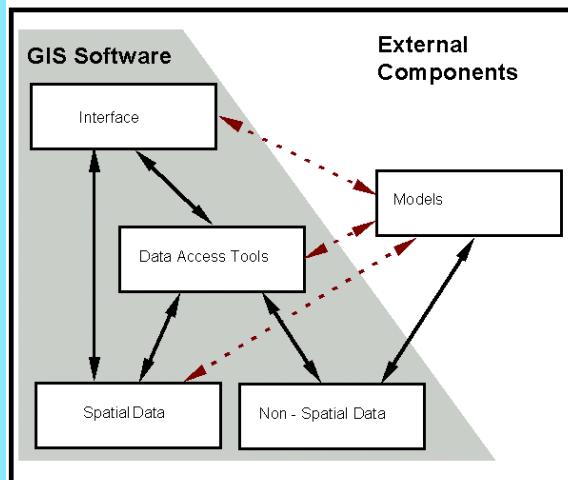


GIS



- GIS open to general public or professionals.
- All data or restricted area.
- MACHU GIS (www.machuproject.eu).

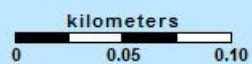
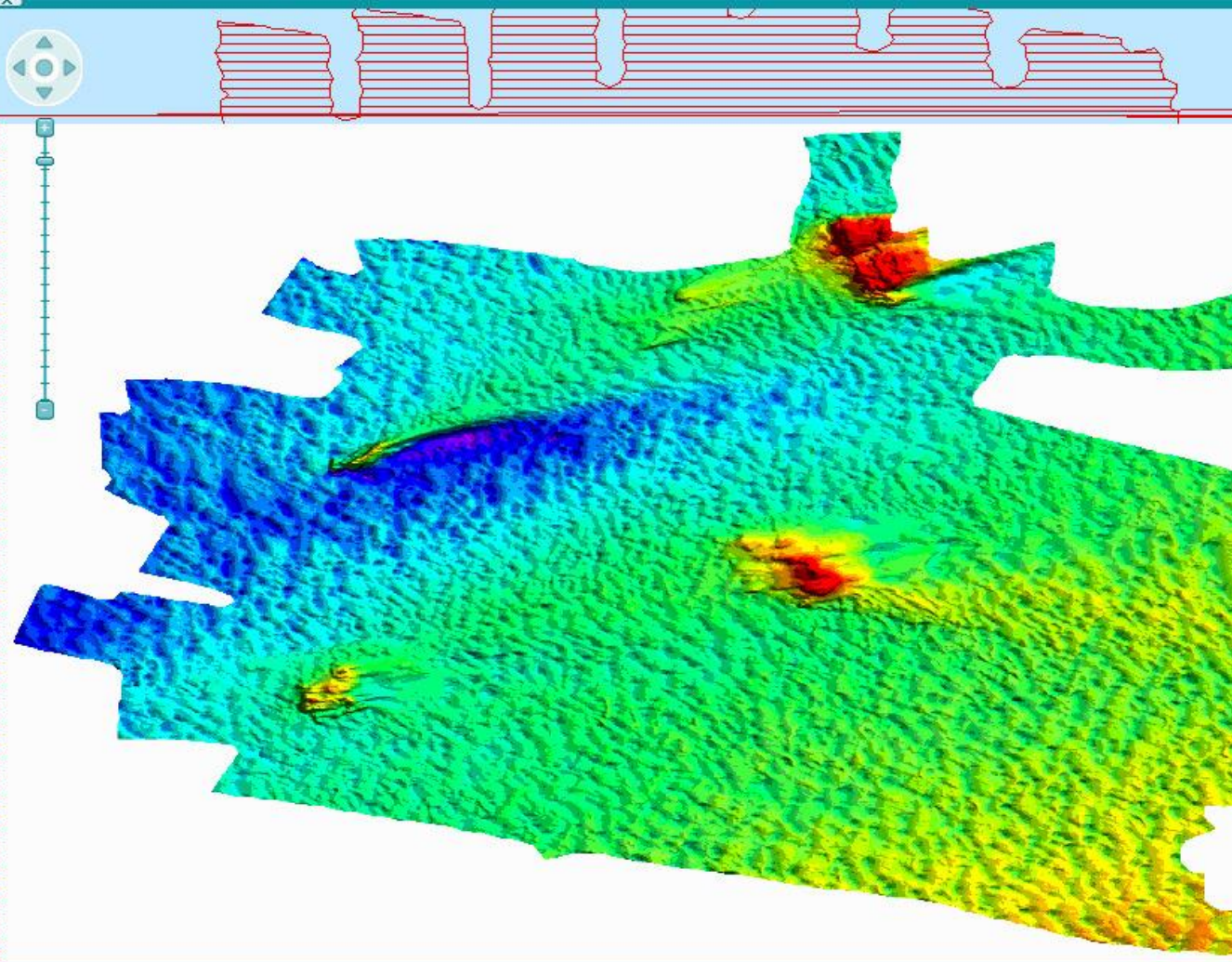
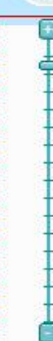
SDSS





Themes Legend

- ☒ General Bathymetric Chart
- ☒ GEBCO
- ☒ Administrative boundaries
 - ☒ National boundaries
 - ☒ Maritime boundaries
- ☐ Personal layers
- ☐ Historic maps
 - ☐ Historic maps of The Netherlands
 - ☐ Historic maps of Poland
- ☐ MACHU test areas
- ☐ Legislation
- ☒ Research areas
 - ☒ Research areas
 - ☒ RES_NL
 - ☐ RES_DE
 - ☐ RES_PL
- ☒ Cultural Heritage Underwater
 - ☒ Sites
- ☒ Research images
 - ☒ Research images
 - ☒ res_nl_2003_mbeam_1
 - ☐ res_nl_2008_mbeam_6



Measure:

lon: 4° 56' 17.2" E

lat: 53° 2' 39.2" N

Scale 1: 2685

Some states' efforts on preservation UCH

Maritime programme 2012-2015

Evaluation legislation – initiatives towards municipalities

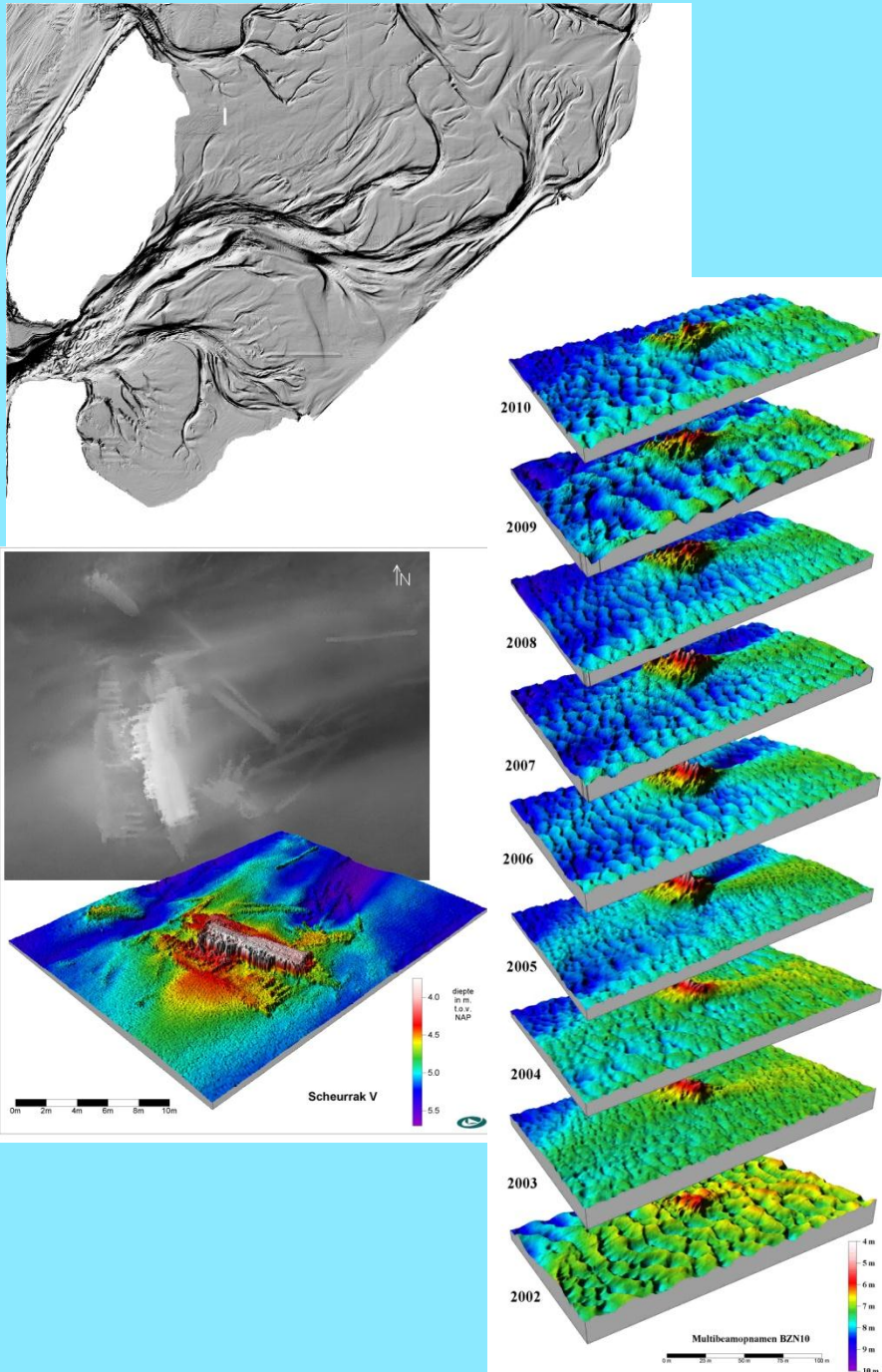
'Omgevingswet'

Machu

European research projects

Inventories and maps of archaeological sites and values: North Sea and Wadden Sea



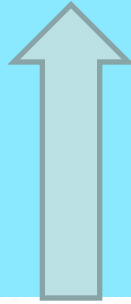
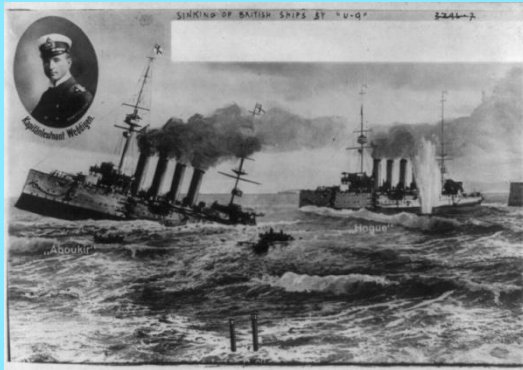


- western part of the Wadden Sea well investigated
- In EU-Projects MoSS, MACHU and BACPOLES much information has been gathered on: natural circumstances, cultural resources, complexity of the area.
- Trilateral cooperation eastern Wadden sea
- 4-D IKAW

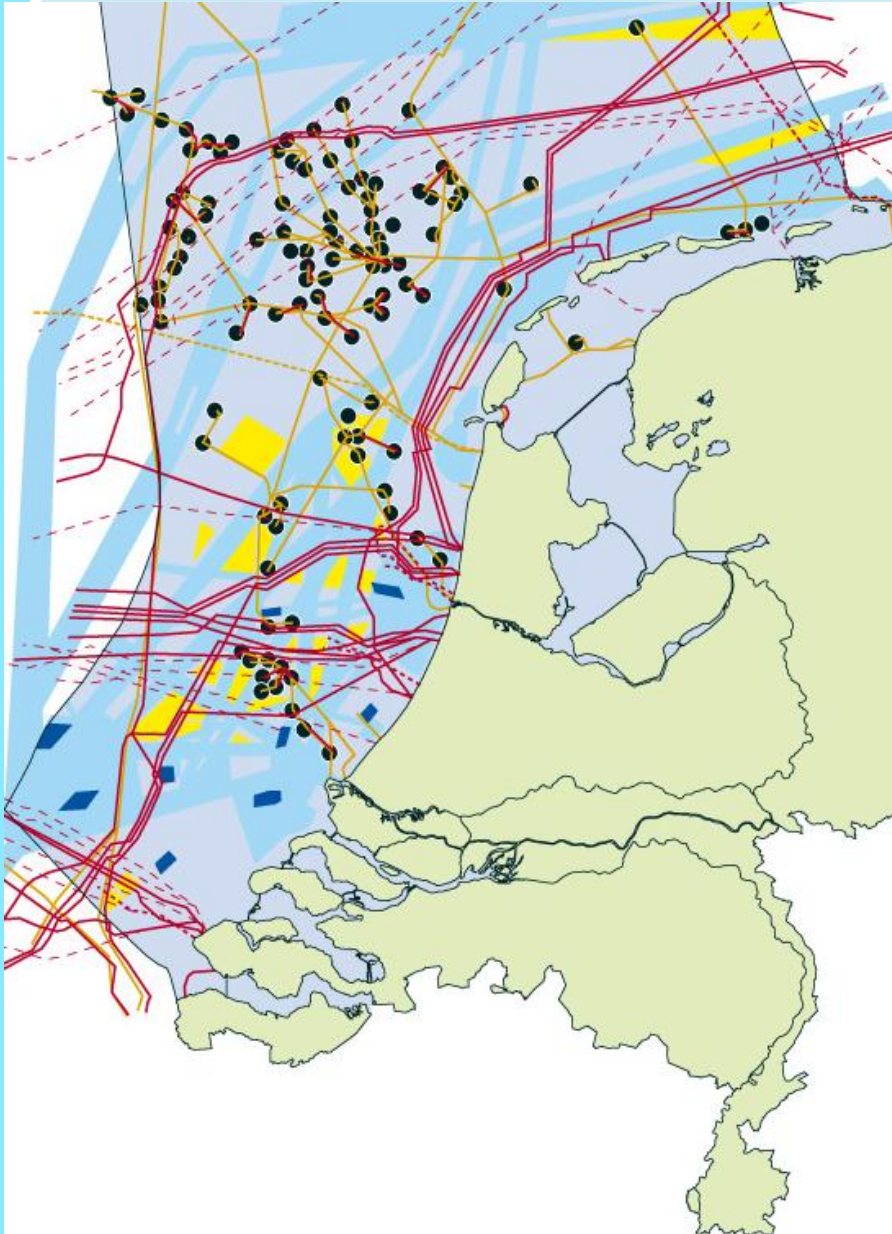


- North Sea: large area, prehistoric finds, pehistic landscapes.
- Existing Predictive models based on geological information, abundance of peat

Existing Indicative Map of
Archaeological Values (IKAW)



Goal is to get a better view on the
underwater cultural heritage,
prehistory to 20th century



Data

1. Known values
2. Geological information
3. Historical data, including maps and archives
4. Geomorphology (e.g. sedimentation-erosion)
5. Threats
6. Known soil-disturbances

**Of course we do realise
it's an on-going effort**





Rijksdienst voor het Cultureel Erfgoed
*Ministerie van Onderwijs, Cultuur en
Wetenschap*

Thank you for your attention



Marie-Catherine Houkes
m.houkes@cultureelerfgoed.nl