



# PartiSEApate

## Multi-Level-Governance in Maritime Spatial Planning

Angela Schultz-Zehden, sustainable-projects s.Pro GmbH

Project Manager - PartiSEApate



Part-financed by the European Union  
(European Regional Development Fund)



- **BaltSeaPlan / BaltSeaPlan Findings:**
  - **8 MSP Pilot Projects:** Stocktake, Conflict Analysis, Planning Tools, Draft Plans, etc.
  - Policy Analysis, Pan-Baltic Trends → **Gaps in Maritime Policy**
  - Special Reports & Tools: **Models, Data, Fishery, Stakeholders in MSP**
- **Countries:**
  - **Sweden:** Creation of Swedish Agency for Marine and Water Management
  - **Lithuania:** Extension of the Lithuanian General Plan to EEZ
  - **Latvia:** Legislation on MSP passed
- **Pan-Baltic Developments:**
  - **BaltSeaPlan Vision 2030 & Data Recommendations**
  - **Necessary Common Minimum Requirements for MSP in the Baltic Sea** (Plan Bothnia)
  - Continuous work of **HELCOM-VASAB** cooperation
  - **VASAB Ministerial Conference** → September 2014
  - **Bonus MSP Research Call** → 2013
- **EU Initiatives → BSR reactions?**
  - **MSP Directive** & Blue Growth
  - New programming 2014-2020



- **Lack of cross-sectoral thinking** in some sectors (i.e. like shipping) - feel threatened by MSP  
→ establish dialogue
- **Topics missing on current MSP agenda** and/or no appropriate instruments (i.e. cultural heritage, fishery, combined uses with wind farms AND **climate change !**)  
→ dialogue, research, tools
- **Pan-Baltic perspectives** in national maritime policies on \*environment, \*fisheries, \*maritime transport & \*energy related structures (i.e. SuperGRID, Ports & Motorways of Sea, Blue corridors) to be planned on a transnational basis  
→ pan-Baltic dialogue on transnational priorities
- **Streamline Transnational MSP consultations**  
→ Gain practical experience & develop & test instruments
- **Ecosystem based approach in MSP** – accepted but difficult to be realised unless good knowledge of the sea, trends and combined impacts  
→ Strengthen cooperation with research and among data networks



- Duration: Sept 2012 - Sept 2014
- Budget: 1.043.015 €
- 11 Partners:
  - Maritime Institute Gdansk (PL)
  - Maritime Office n Gdynia (PL)
  - Maritime Office Szczecin (PL)
  - VASAB Secretariat (LV)
  - Baltic Environmental Forum (LV)
  - Latvian Institute for Aquatic Ecology (LV)
  - Klaipeda University – Coastal Research and Planning Institute (LT)
  - Region Skane (SE)
  - Swedish Agency for Marine & Water Management (SE)
  - Federal Maritime and Hydrographic Agency (DE)
  - Institute of Marine Research (NO)





## **Communicate “Findings / Recommendations”**

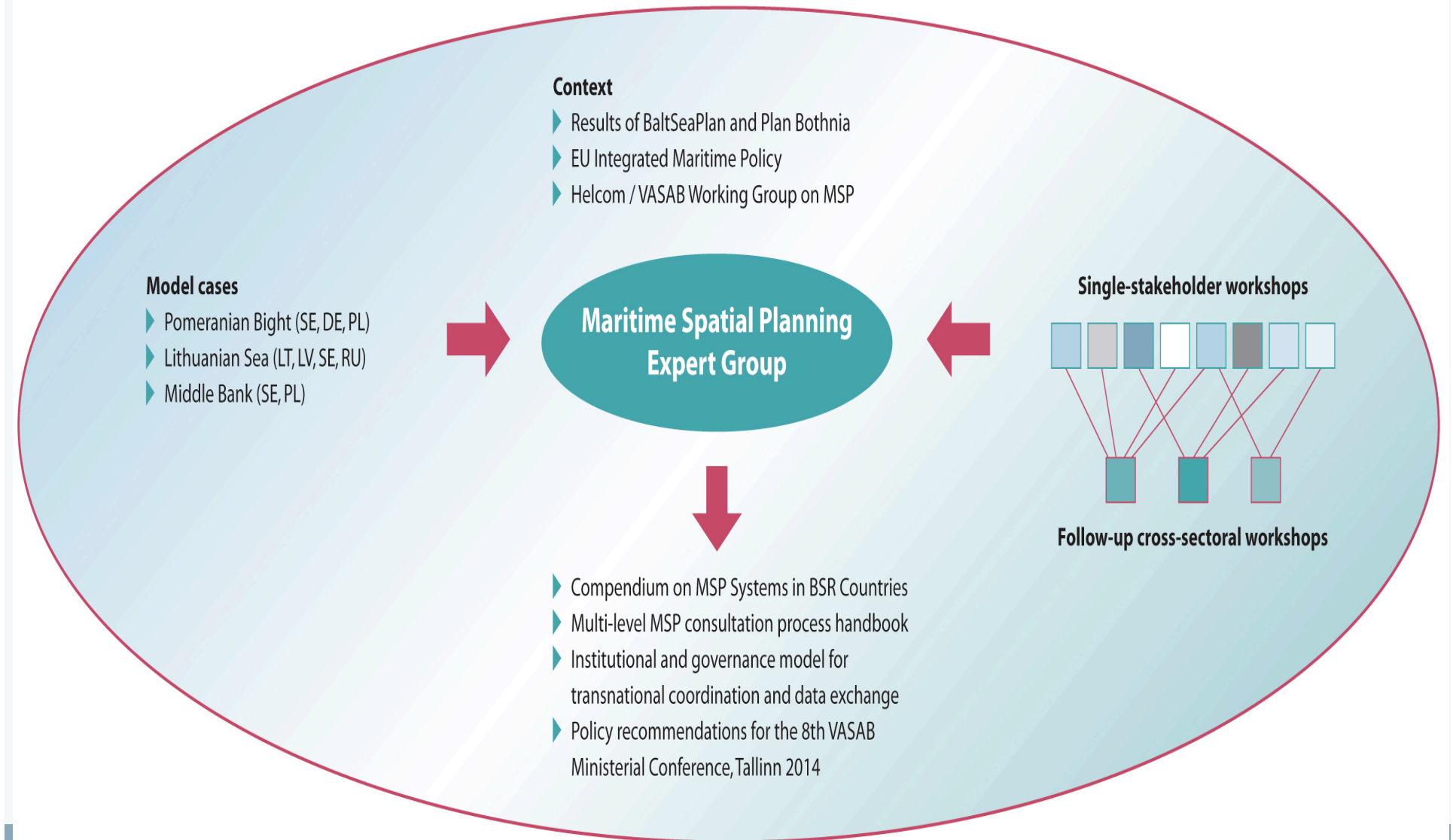
- involve stakeholders around the Baltic Sea Region
- move outside MSP expert circles - dialogue with
  - Sectors (shipping, fishery, offshore wind, aquaculture, etc.)
  - Nature Protection
  - Researchers, data experts / holders / networks
  - Local / regional level - all BSR

## **Build on “Findings / Recommendations”**

- Develop / agree on possible solutions:
  - Methods & Tools for MSP consultations processes
  - At all levels, esp. local-national, cross-border
  - Pilot Projects: Pomeranian Bight, Lithuanian Sea, Middle Bank
  - Sectors, Data, Research

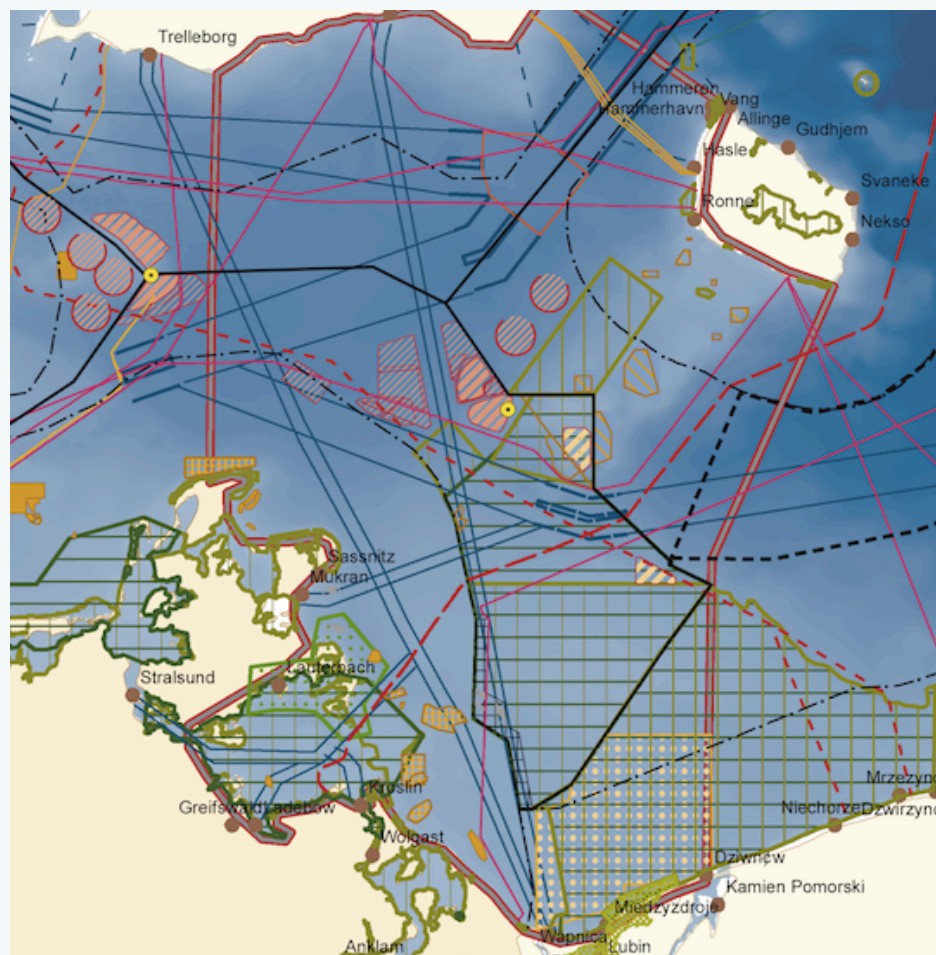
## **Create Basis for Political Processes / Decisions**

- MSP institutional & governance model  
for transnational cooperation & data exchange





## Pilot 1: Pomeranian Bight



### Shipping

- Shipping Route
- Traffic Separation Scheme
- TSS/Ship Route, Recommended
- Inshore Traffic Zone
- Deep Water Route
- Precautionary Area

### Sand and Gravel Extraction

- In Use
- Approved
- Planned
- Proposed
- Presently out of use
- Status unknown

### Natural Gas

- Presently out of use

### Pipelines

- Natural Gas Pipeline, Approved
- Natural Gas Pipeline, in Use
- Natural Gas Pipeline, Planned

### Offshore Windfarms

- In Use
- Approved
- Planned
- Denied
- Denmark: OWP Project, no fixed outlines yet

### Platforms

- Measurement Platform

### Underwater Cables

- High Voltage Cable, in Use
- High Voltage Cable, Approved
- Data Cable, in Use
- Data Cable, out of Use
- DataCable, Planned

### Nature Conservation

- Natura 2000 - SPA Bird Directive
- Natura 2000 - SAC Habitat Directive
- UNESCO Biosphere Reserve
- National Park

### Boundaries

- EEZ
- Territorial Sea
- Borders
- Pilot Project Area Pomeranian Bight
- unclear legal status (PL and DK)
- Northern Approach / Roadstead
- Seaports of Swinoujske and Szczecin\*

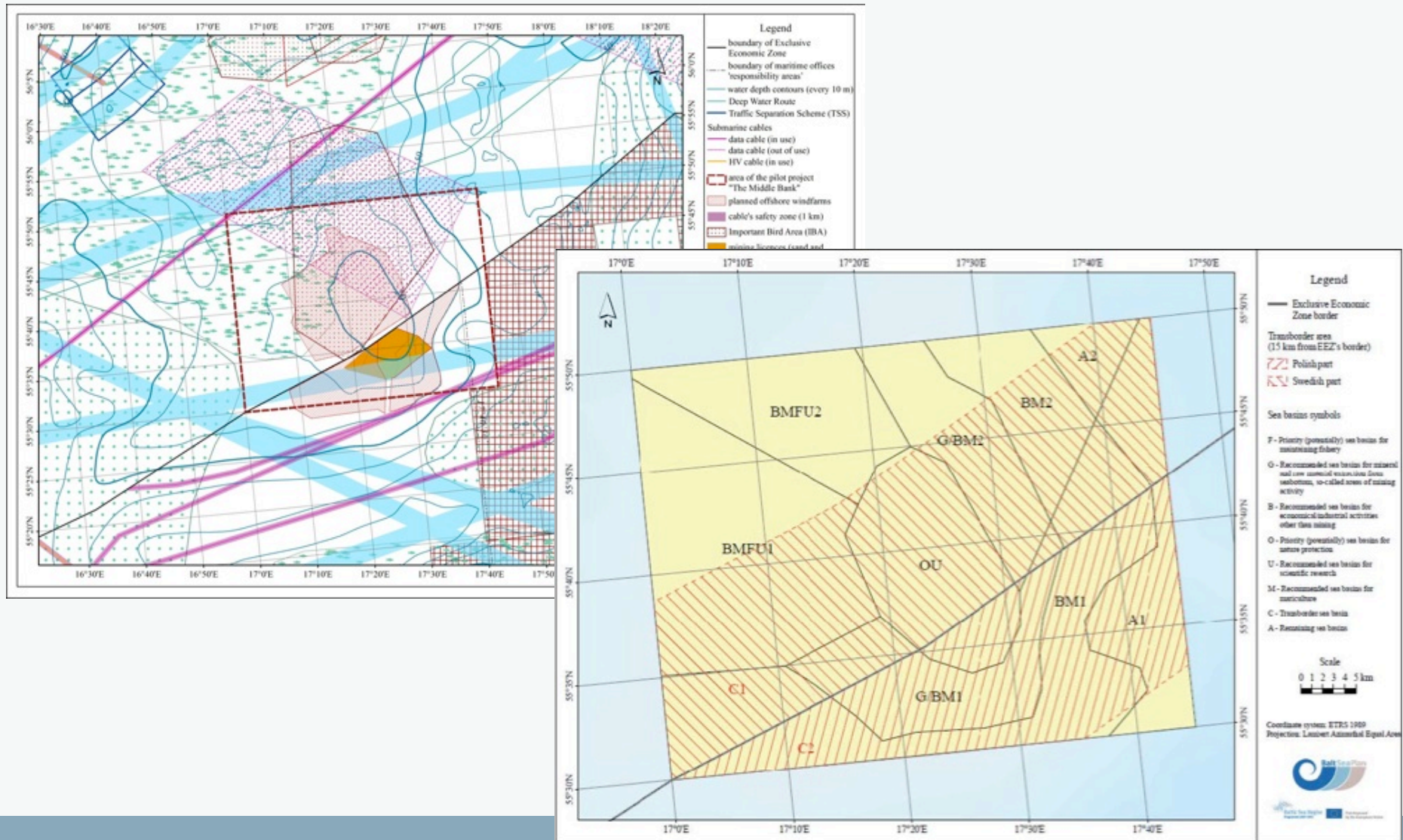
\*According to German opinion this area is part of the German EEZ, whereas in relation to Poland no rights or sovereign powers are exercised. According to Polish opinion this area is part of the Polish territorial sea.

Map Projection:

Merator / E4°N / WGS 84

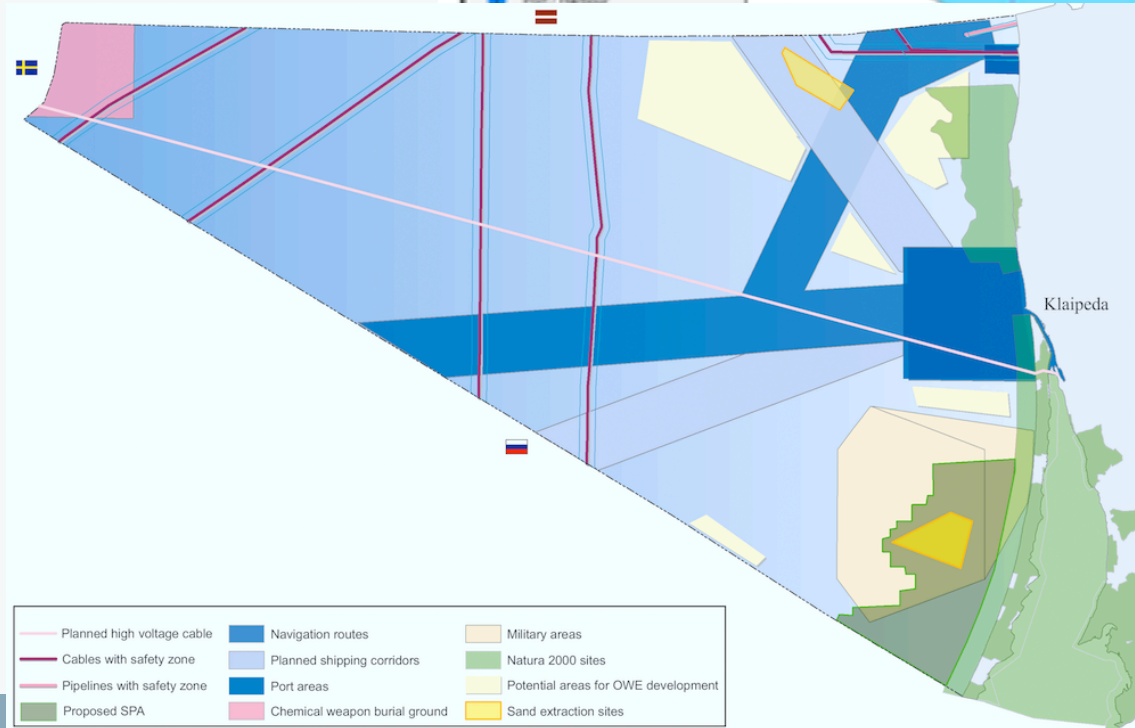
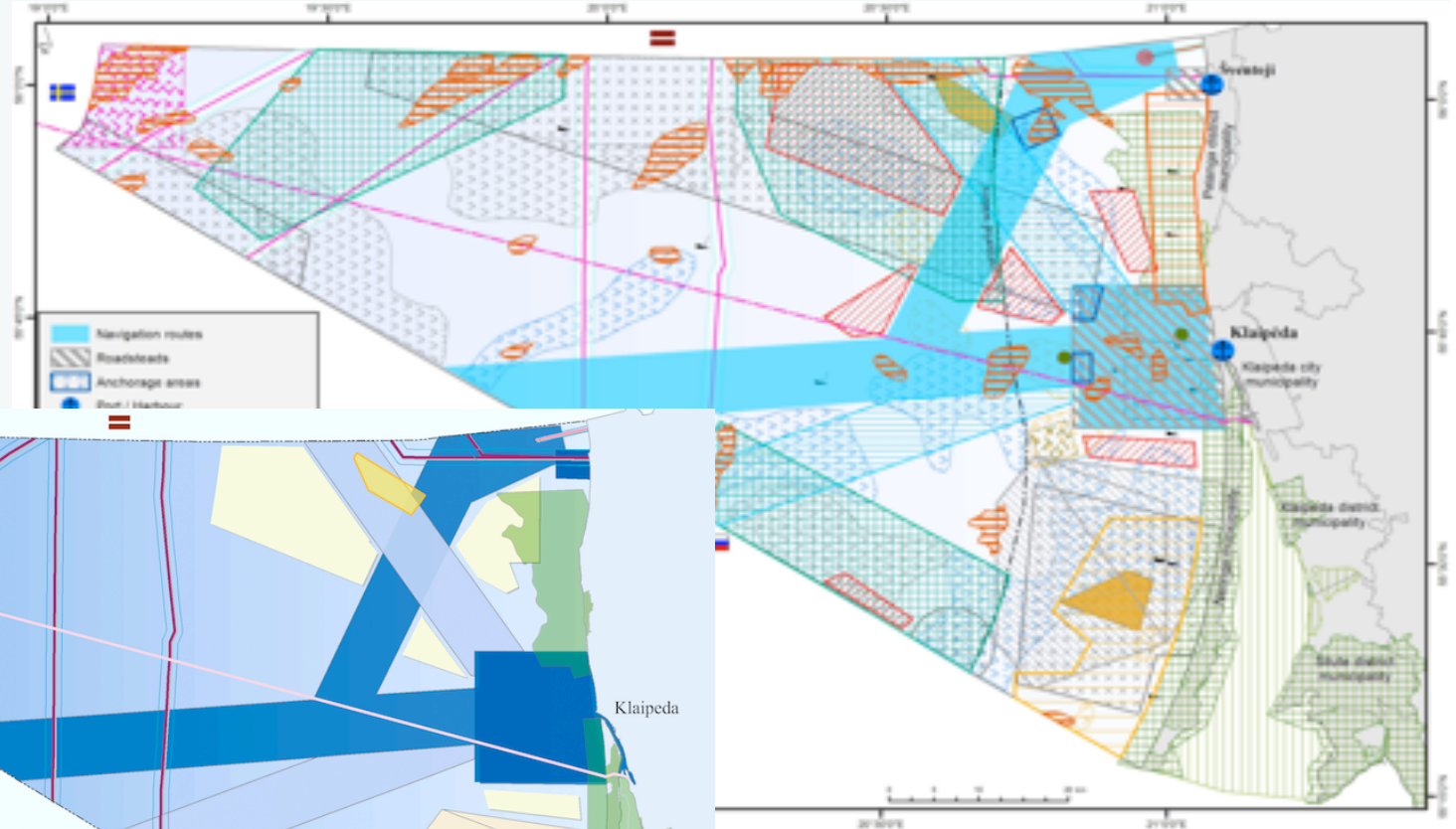


## Pilot 2: Middle Bank





## Pilot 3: Lithuanian Sea



## Data Network Building

- Create roadmap to ensure compatibility among data networks



## Research

- spatial dimension of research
- role of scientist in MSP process
- How to deliver ecosystem based approach?



## Environment & Protection

- Current knowledge of environmental factors crucial in MSP process
- Spatially applicable environmental and nature conservation measures
- Ecological connectivity through MSP



## Cultural Heritage / Tourism

- potentials/limitations of underwater heritage for tourism development
- threats from other sea uses
- How to address the issue within MSP



## Offshore Wind Energy

- Pan-Baltic strategy & infrastructure / grids ensuring exchange of energy between countries / land- and sea
- buffer zones
- combined uses



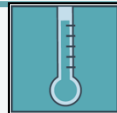
## Shipping/Ports Development

- Intelligent corridors / traffic separation
- Rearrangement of shipping lanes
- High risk areas / safety zones, Environmental concerns



## Climate Change

- Considerations for future plans
- Which uses might be most effected?
- BaltAdapt



## Aquaculture / New Uses

- Spatial implications of new uses, i.e. mussel & algae farms and/or IMTAs





- **Update of Compendium** on MSP Structures around the BSR
  - Web-Based
  - Institutions relevant for MSP Consultation
- **Model Cases** for multi-level governance in MSP
  - **Roadmaps / Reports / Tools** for transnational MSP stakeholder consultation
- **Reports on**
  - **sector perspectives**, expectations towards MSP, targets & priorities for future development on pan-Baltic scale
  - cross-sectoral synergies & conflicts and **related MSP solutions (tools, instruments)**
- Basis for **MSP BSR Research** agenda
- **Handbook on multi-level / transnational MSP consultation process**
  - whom to involve, when to involve, how to involve
  - what to expect & achieve at the end of the process

## **Institutional & Governance Model (Policy)** for transnational MSP Development

- MSP consultation process
- Common Standards for MSPs  
i.e. transnational topics, comparable legend, similar restrictions zones
- Procedures & standards for the transnational data exchange

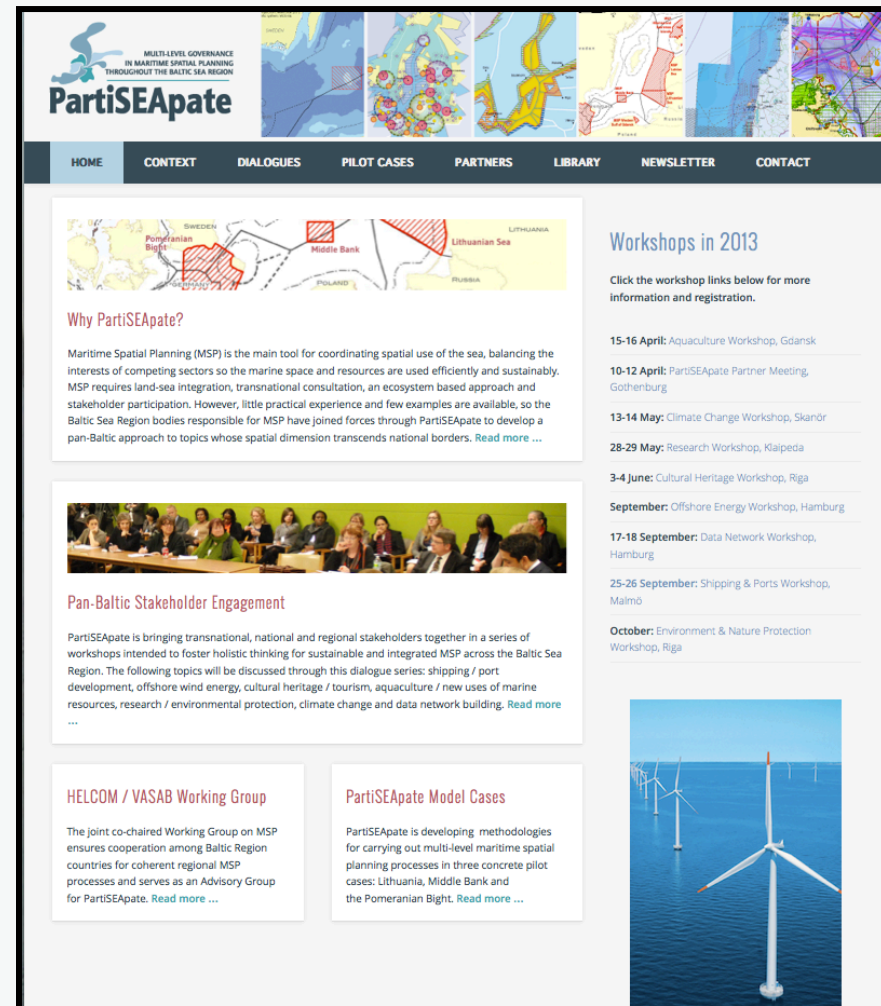
**VASAB expert  
accompanies  
process**

For more information, newsletter  
subscription and workshop  
registration visit...

[www.partiseapate.eu](http://www.partiseapate.eu)

or send an email to

[info@partiseapate.eu](mailto:info@partiseapate.eu)



The screenshot shows the PartiSEApate website interface. At the top is the logo and a navigation bar with links: HOME, CONTEXT, DIALOGUES, PILOT CASES, PARTNERS, LIBRARY, NEWSLETTER, and CONTACT. Below the navigation bar, there are several content blocks:

- Why PartiSEApate?**: A text block explaining Maritime Spatial Planning (MSP) as a tool for coordinating spatial use of the sea, balancing interests of competing sectors. It mentions that MSP requires land-sea integration, transnational consultation, and an ecosystem-based approach. A map of the Baltic Sea region is shown above the text.
- Pan-Baltic Stakeholder Engagement**: A text block stating that PartiSEApate brings transnational, national, and regional stakeholders together in a series of workshops. It lists topics like shipping, port development, offshore wind energy, cultural heritage, tourism, aquaculture, and new uses of marine resources. A photo of a group of people in a meeting is shown above the text.
- HELCOM / VASAB Working Group**: A text block mentioning the joint co-chaired Working Group on MSP, which ensures cooperation among Baltic Region countries for coherent regional MSP processes and serves as an Advisory Group for PartiSEApate.
- PartiSEApate Model Cases**: A text block stating that PartiSEApate is developing methodologies for carrying out multi-level maritime spatial planning processes in three concrete pilot cases: Lithuania, Middle Bank, and the Pomeranian Bight.
- Workshops in 2013**: A list of workshops with dates and locations:
  - 15-16 April: Aquaculture Workshop, Gdansk
  - 10-12 April: PartiSEApate Partner Meeting, Gothenburg
  - 13-14 May: Climate Change Workshop, Skanör
  - 28-29 May: Research Workshop, Klaipeda
  - 3-4 June: Cultural Heritage Workshop, Riga
  - September: Offshore Energy Workshop, Hamburg
  - 17-18 September: Data Network Workshop, Hamburg
  - 25-26 September: Shipping & Ports Workshop, Malmö
  - October: Environment & Nature Protection Workshop, Riga

At the bottom right of the screenshot is a large image of a wind turbine in the sea.