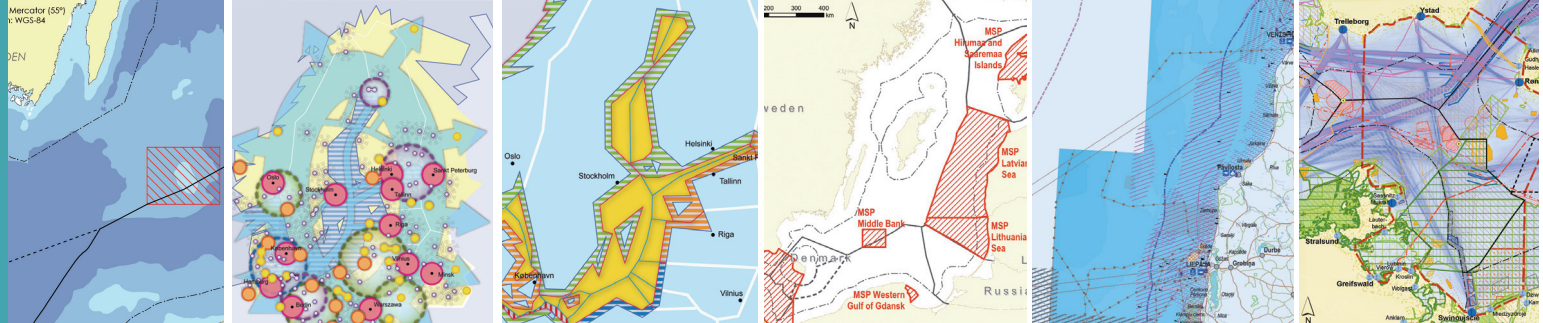


# Have a say on MSP concepts



## Registration

**Getting in touch with PartiSEApate and registration for the workshops is very easy.**

- Send an email to [info@partiseapate.eu](mailto:info@partiseapate.eu) and tell us in what topics you are interested in. You will then be informed in good time about workshop registration dates and PartiSEApate events.
- Subscribe to the PartiSEApate newsletter at [www.partiseapate.eu](http://www.partiseapate.eu)
- Visit PartiSEApate website at anytime for event updates and background information on the project and MSP in general.

**To register for the workshops visit:**

[www.partiseapate.eu](http://www.partiseapate.eu)

## Contact

### Lead Partner

Maritime Institute Gdańsk  
Długi Targ 41-42, 80830 Gdańsk, Poland

Joanna Przedzrymirska  
[joaprz@im.gda.pl](mailto:joaprz@im.gda.pl)  
+48 583019339

### External Project Coordination

s.Pro sustainable-projects GmbH  
Rheinstraße 34, 12161 Berlin, Germany

Angela Schultz-Zehden  
[asz@sustainable-projects.eu](mailto:asz@sustainable-projects.eu)  
+49 30832141740



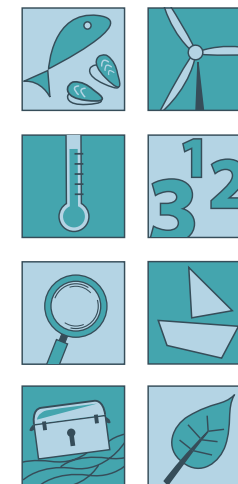
PartiSEApate is a flagship project of the EU Strategy for the Baltic Sea Region. It is part of the horizontal action "Spatial Planning".



Part-financed by the European Union (European Regional Development Fund).

[www.partiseapate.eu](http://www.partiseapate.eu)

## The Dialogue Series on Maritime Spatial Planning (MSP)



## Exchange Information

### Save these dates!

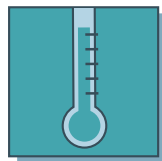


#### Offshore Aquaculture and MSP

15th-16th April 2013, Gdańsk (PL)

**Host:** Maritime Institute Gdańsk

**Agenda:** Spatial requirements of offshore aquaculture, Multi-Trophic Aquaculture, combinations with offshore wind energy parks



#### Climate Change and MSP

13th-14th May 2013, Skanör (SE)

**Host:** Region Skåne

**Agenda:** Effects of climate change on marine uses and MSP



#### Research for MSP

28th-29th May 2013, Klaipėda (LT)

**Host:** Klaipėda University Coastal Research and Planning Institute (CORPI)

**Agenda:** Research priorities for MSP, integration of socio-economic valuation approaches



#### Underwater heritage and MSP

3rd-4th June 2013, Riga (LV)

**Host:** Baltic Environmental Forum

**Agenda:** Assessment of underwater heritages, relations to tourism and other sea uses

## Good reasons to get involved in the PartiSEApate Dialogues on MSP

Maritime Spatial Planning (MSP) is becoming the most important tool for allocating human activities and to find synergies of uses in marine spaces. The number of Baltic Sea Region States developing MSP legislation and processes is increasing rapidly.

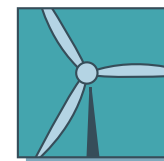
However, many marine users and experts claim that there is a lack of information exchange between representatives of different maritime sectors and maritime spatial planners. The Dialogue Series on MSP addresses this shortcoming within the framework of the Baltic Sea Region Programme project PartiSEApate.

### As sector representative you will:

- Get an update on the status of MSP and its relevance for your sector
- Have a say on MSP concepts and ideas
- Exchange information and views with MSP experts and representatives from your own sector on a pan-Baltic scale
- Generate valuable input for the following cross-sectoral MSP workshops
- Provide guidance on how future MSP dialogues shall be organised

## Generate valuable Input

### Save these dates!



#### Offshore Energy Production and MSP

September 2013, Hamburg (DE)

**Host:** German Federal Maritime and Hydrographic Agency (BSH)

**Agenda:** Super-GRID, pan-Baltic planning, combined uses and buffer zones



#### Data and data infrastructure for MSP

September 2013, Hamburg (DE)

**Host:** German Federal Maritime and Hydrographic Agency (BSH)

**Agenda:** pan-Baltic data exchange infrastructure, data providers and users meeting point



#### Shipping, port development and MSP

25th-26th September 2013, Malmö (SE)

**Host:** Region Skåne

**Agenda:** Intelligent corridors, pan-Baltic spatial shipping strategy, high risk areas



#### Nature Protection and MSP

October 2013, Riga (LV)

**Host:** Latvian Institute of Aquatic Ecology

**Agenda:** Ecological connectivity, spatial relevance of nature conservation measures